

Capital Improvements Program

Fiscal Year 2024



Supplemental Appropriation

Average Construction Costs

FY 20	\$974,000	Let in Spring of 20
FY 21	\$985,000	Let in Spring of 21
FY 22	\$1,477,000	Let in Spring of 22

Rehab and Repair 15%

Subarea Modernizations 50%

District 1 50%

Project Selection Process

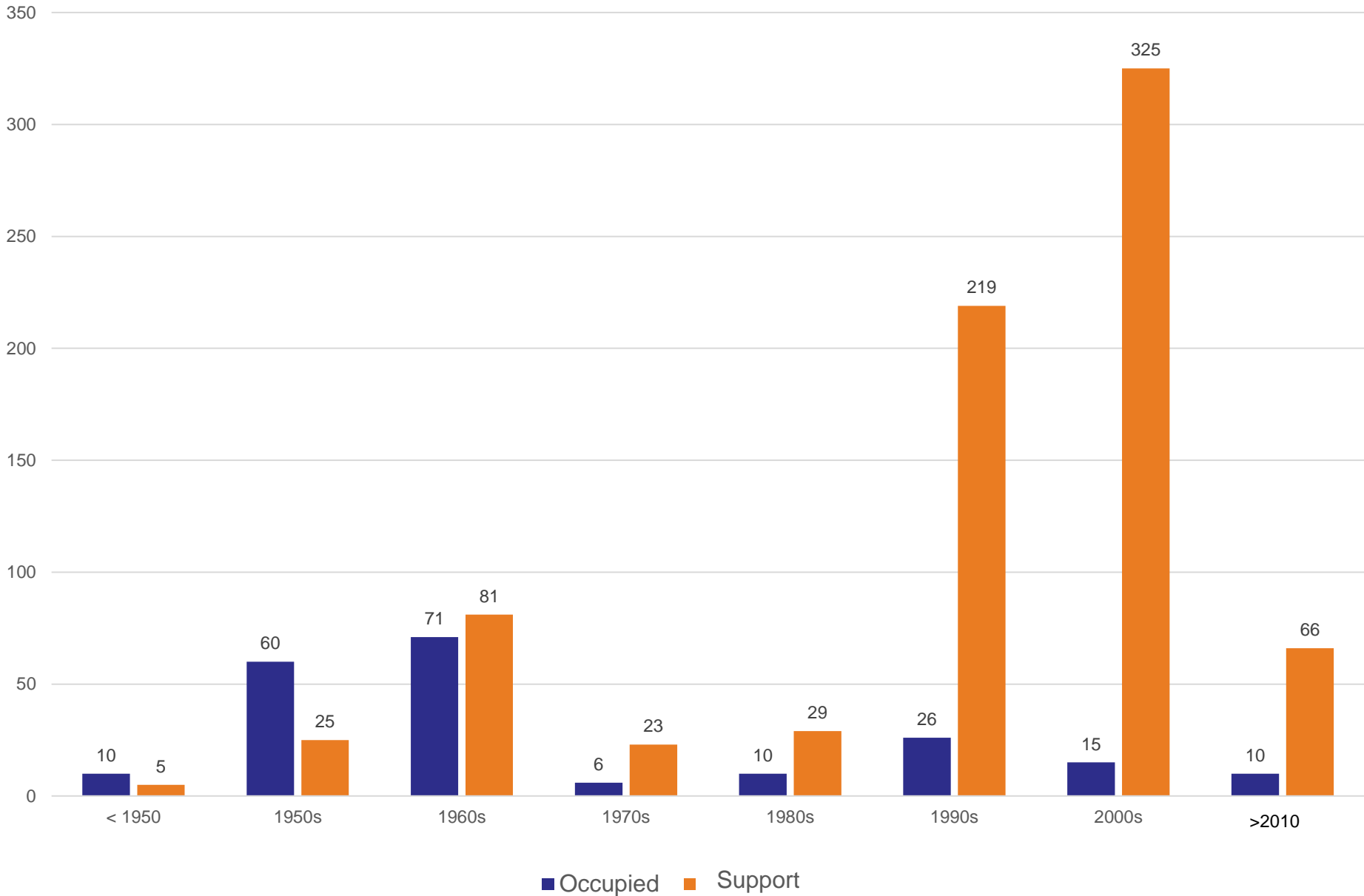
- Primary Focus: **Preserve Building Assets**
- Long-term Focus:
 - Buildings must work with modern equipment
 - Buildings need good access to the roadways

Rehabilitation/Repair

\$5,000,000 for FY 2024

- Total KDOT buildings
 - 980 bldgs. 2,965,951 sq ft
- Inhabitable buildings – offices/labs
 - 208 bldgs. 1,209,356 sq ft
 - District, Areas, Subareas, Material Labs, Construction
- Support buildings
 - 772 bldgs. 1,740,122 sq ft
 - Chemical, equipment, materials storage
 - Vehicle wash buildings
- Safety Rest Areas
 - 36 bldgs.
- Motor Carrier Stations
 - 6 bldgs.

KDOT Buildings: Age & Number



Rehabilitation/Repair

Typical Rehabilitation/Repair expenditures:

- Door and Window Repair/Replacement
- Heating, AC Repair/Replacement
- Lighting and Electrical Repair/Replacement
- ADA Requests
- Plumbing Repair/Replacement
- Roofing Repairs
- Overhead Door Repair/Replacement
- Salt/Sand Building Repair
- Fencing Repairs/Yard Security
- Parking Lot Repair/Resurfacing

Example of issues requiring Rehab/Repairs



Reroofs FY 24

\$719,916

- Seneca Cone
- Gage Metro Office
- Abilene Salt Stg.
- Goodland Dome
- Ft. Scott Cone
- Montgomery County SRA
- Medicine Lodge Cone
- Coldwater Cone
- Tribune Cone

Reroofs

- Salt Dome Before & After
- Typical Re-roof Dome \$55,000
- Typical Re-roof Cone \$70,000



Cone vs Dome



Subarea Modernization



- 1950's Plow Truck
 - 23,500 GVW
 - 8 ft. wide plow
 - 2 cubic yd. spreader
 - approx. 26 ft. long



- Modern Plow Truck
 - 58,000 GVW
 - 12 ft. wide plow
 - 12 cubic yd. spreader
 - approx. 40 ft. long

Typical Plow Trucks: 1950's vs. Current

Subarea Modernization



Clay Center Before



Clay Center After

Subarea Modernization

FY 2024 \$9,214,237

Atchison – 1957

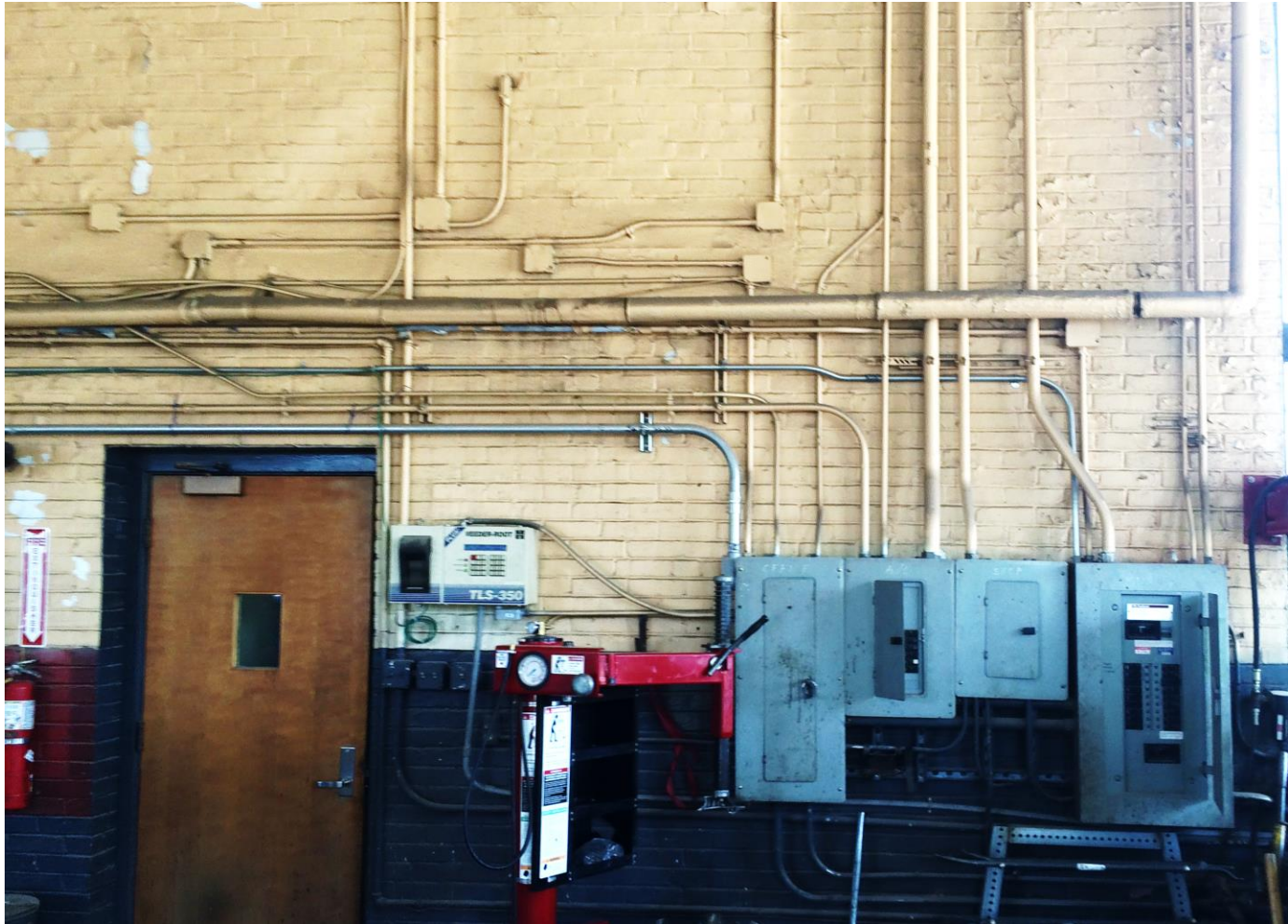
Osage City – 1953

Yates Center – 1961

Altoona – 1966

Area Shop Improvements

FY 2024 \$1,739,328



Area Shop Improvements

FY 24 Syracuse - 1954

FY 25 Dodge City - 1966

FY 26 Horton - 1956

FY27 Atwood - 1953

FY 28 Marion - 1957

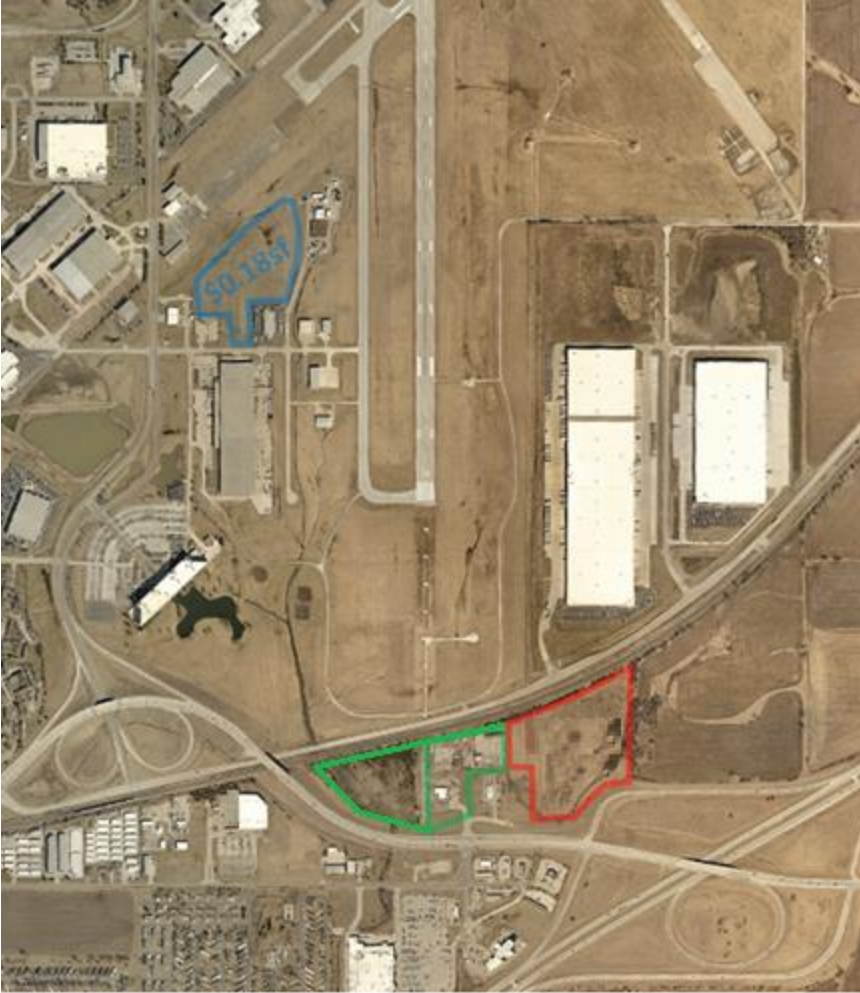
District 1 Complex

FY 24 \$7,507,918



- Original Construction 1934.
- Substantial Additions in 1958, 1961 and 1985.
- Limited Room and Limited Expansion.
- Equipment Must Travel Through the City of Topeka.

Gardener Subarea Relocation



Budget Neutral Trade with a Johnson County Airport Commission. And proposed sale of excess ROW to adjacent developer.

Relocated at the nearby New Century Airport industrial park.

Maintains good access to the highways served.

Local support for the project.