



United States Department of Agriculture

USDA-Natural Resources Conservation Service— Kansas



Response Opportunities

Karen A. Woodrich
Kansas NRCS State Conservationist

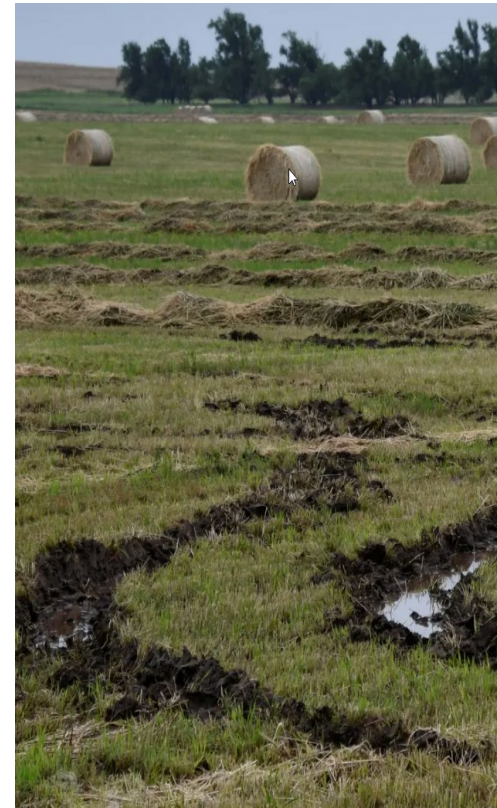


Helping People Help the Land



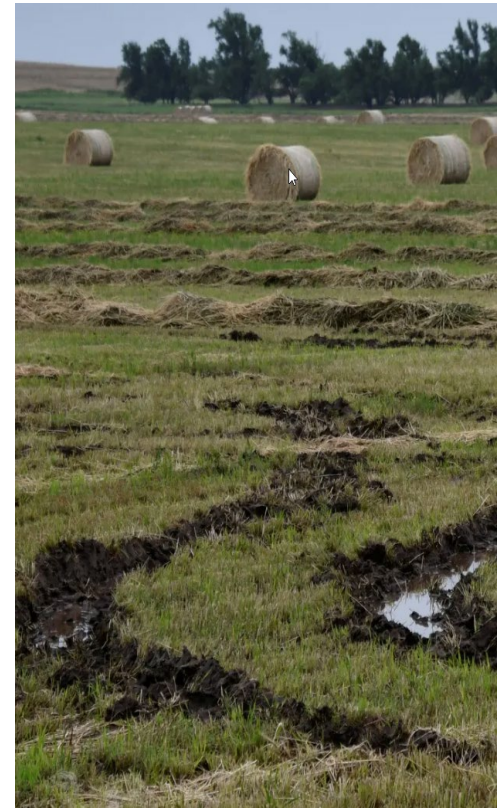
Environmental Quality Incentives Program (EQIP)

- Offers financial & technical assistance to private landowners in identifying, designing and implementing conservation practices
- While not designed to be a “disaster” response program, the State Conservationist does have some limited flexibility, pending available funds, to re-direct resources in times of need

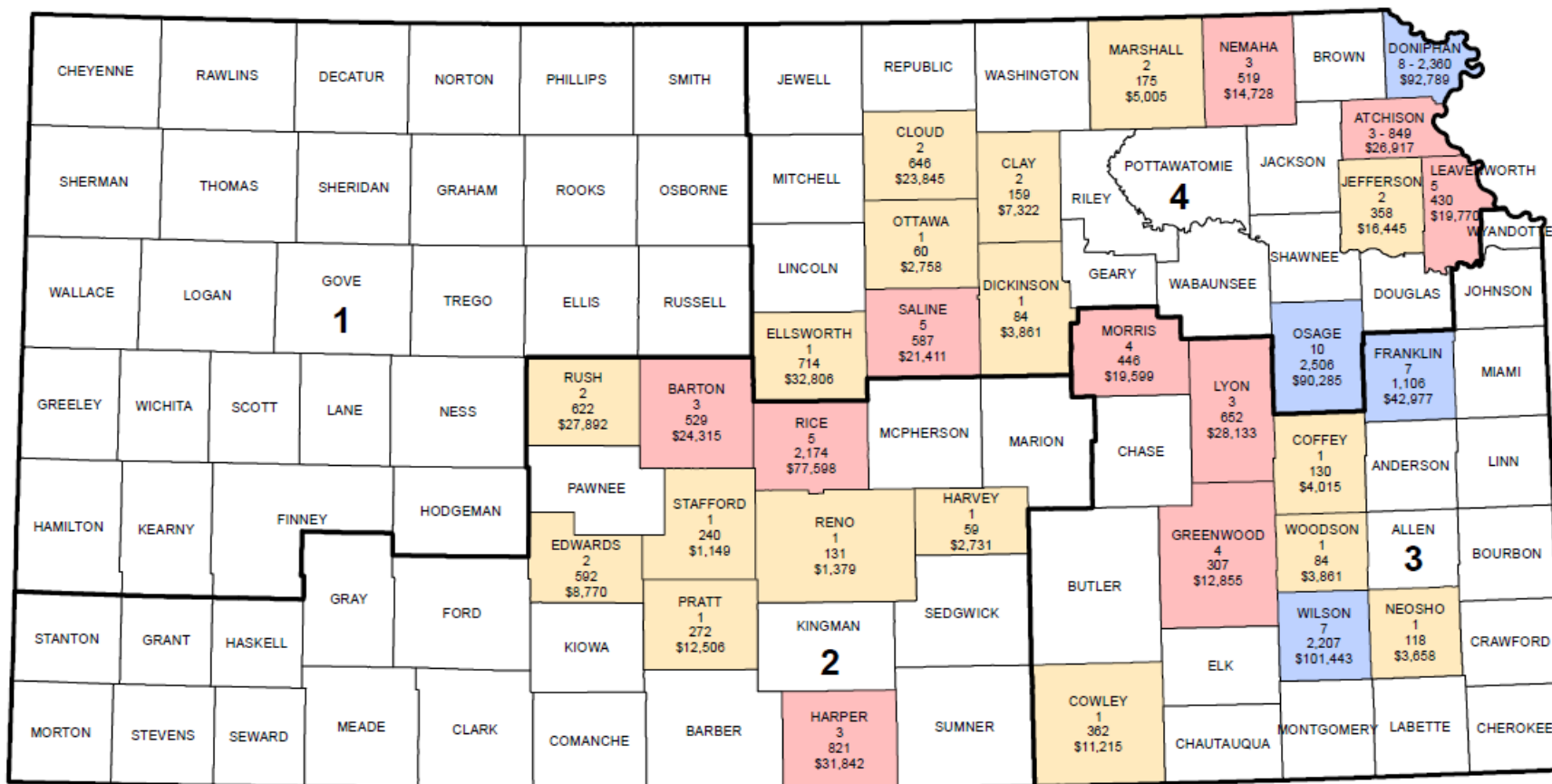


Environmental Quality Incentives Program (EQIP)

- The Kansas Disaster Flood Recovery Initiative provided technical and financial assistance to producers in disaster declared counties
- Producers were eligible to plant cover crops on cropland where flooding or extremely wet conditions prevented crops to be planted



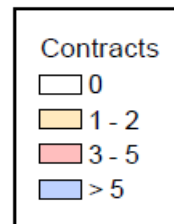
Fiscal Year 2019 - Kansas Environment Quality Incentives Program Kansas Flood Recovery Initiative Contract Obligations



— NRCS Administrative Areas

1st No. = Number of Contracts Approved
2nd No. = Number of Acres Treated
3rd No. = Number of Dollars Obligated

Area	No. of Contracts	Acres	Dollars Obligated
1	0	0	\$ 0
2	19	5,440	\$188,182
3	29	5,411	\$227,755
4	45	9,448	\$357,942
Total	93	20,299	\$773,879





Emergency Conservation Program (ECP)

- Administered by the Farm Service Agency (FSA)
- Provides financial and technical assistance for farmers and ranchers to restore farmland damaged by natural disasters
- FSA County Committee determinations/recommendations for ECP eligibility
- OneUSDA team (NRCS and FSA) organized local work group (LWG) meetings and conducted site visits to determine type of financial and technical assistance needed



Emergency Watershed Protection Program (EWPP)

Response Program-

**Remove the hazard and
restore stream
hydrology back to pre-
disaster conditions**

Types:

**Recovery (exigent /
emergency)**

Floodplain Easement



EWPP requires a sponsor



Local Unit of Government

- Responsible for landrights
- Responsible for permits
- Responsible for O&M
- Responsible for local cost share (25%)



Emergency Watershed Protection Program (EWPP)- Recovery

Natural Disaster (flood, fire, drought, windstorms)

Sudden Watershed Impairment (clogged streams, unstable streambanks, eroded upland slopes due to drought or fire)

Imminent Hazard to Life/Property

Economically, Socially, and Environmentally Defensible



EWPP cannot be use for:



Pre-existing Conditions

O&M Problems

Federal Aid Highways Projects

Private Transportation Facilities

Rebuild infrastructure (roads, bridges, utilities, buildings/structures)



EWPP – Floodplain Easements

- restore, protect, maintain, and enhance the functions of the floodplain;
- conserve natural values including fish and wildlife habitat, water quality, flood water retention, ground water recharge, and open space;
- reduce long-term federal disaster assistance; and safeguard lives and property from floods, drought, and the products of erosion.

Landowners voluntarily enter into a perpetual easement that provides USDA-NRCS with the full authority to restore and enhance the floodplain's functions and values.



EWPP – Floodplain Easements

Eligible Land:

- Lands damaged by flooding during a specific natural disaster for which Congress allocates EWPP funding, or
- Lands damaged by flooding at least twice during the last 10 years or at least once during the last 12 months, or
- Other floodplain lands that would contribute to the floodplain restoration or improve the practical management of the easement, or
- Lands that would be inundated or adversely impacted as a result of a dam breach.
- Additionally, the land must be privately owned or owned by State or Local Government.



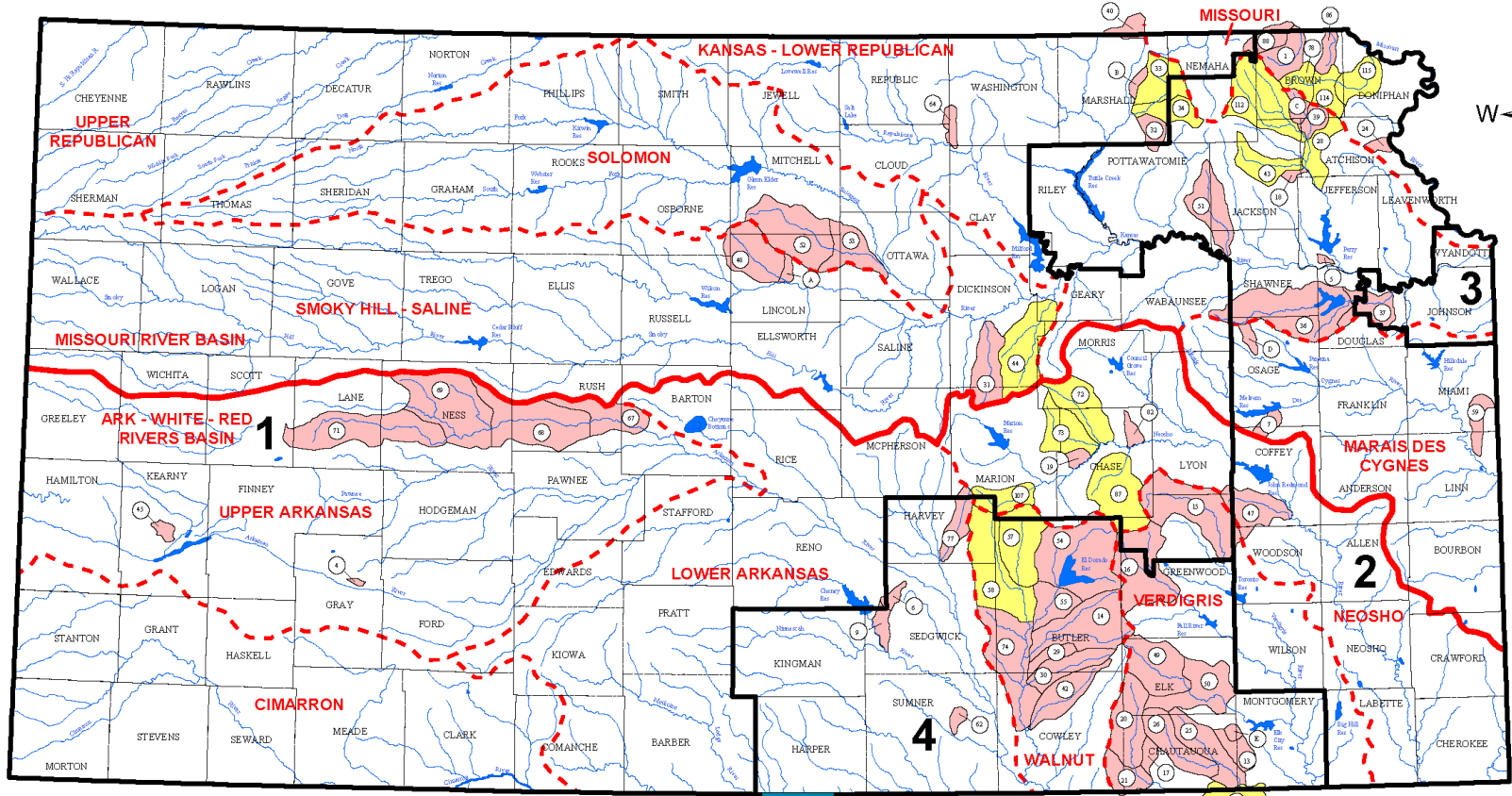
EWPP Funding \$



- **Not a budgeted line item**
- **Requires supplemental appropriations from Congress**
- **Eligible projects are typically put on “wait list”**
- **Limited funding for “exigency” projects may be available**



Kansas PL-566 Watershed Projects



- PLANNING STAGE (PROGRAM NEUTRAL)
- OPERATIONS STAGE (PL-566)
- CONSTRUCTION COMPLETE (PL-566)
- CONGRESSIONAL DISTRICTS
- RIVER BASIN BOUNDARY
- SUB-RIVER BASIN BOUNDARY

**Watershed Projects
Kansas**
January 2011

Watershed and Flood Prevention Operations (WFPO) Program

Provides technical and financial assistance to project sponsors to develop Watershed Work Plans and implement the planned activities within a specific geographic area for the benefit of the general public

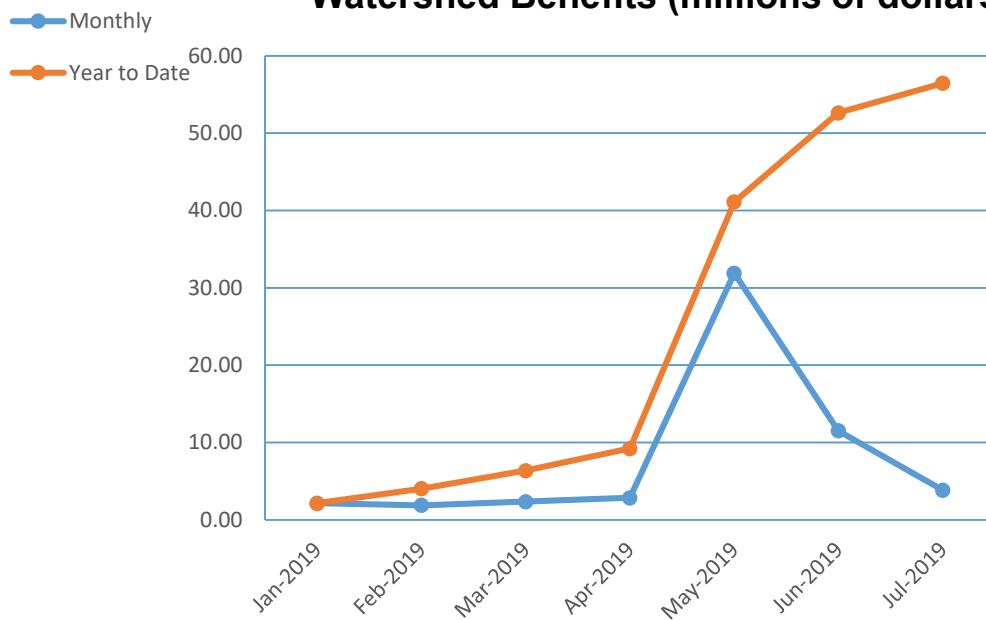
- Also referred to as PL-566 Small Watershed Program



Watershed Flood Reductions Benefits

FY 2019

Watershed Benefits (millions of dollars)



Benefits (millions of dollars)

Month	Monthly	Year-to-Date
Jan-2019	2.14	2.14
Feb-2019	1.88	4.02
Mar-2019	2.36	6.37
Apr-2019	2.84	9.21
May-2019	31.90	41.11*
Jun-2019	11.52	52.63
Jul-2019	3.84	56.47

* May Storms



Small Watershed Dam (PL-566) project eligibility:

- ✓ **Flood prevention**
- ✓ **Watershed protection**
- ✓ **Agricultural water management**
- ✓ **Water supply**
- ✓ **Non-ag water management (wildlife and rec)**



Small Watershed Dam (PL-566) project scope:

Max watershed size = 250,000 acres

Physically, environmentally, socially, and economically sound plan (Environ Assess or EIS)

- Economic analysis (benefit/cost ratio)
- Alternative development
- Document benefits and impacts





United States Department of Agriculture

- ❖ Last 2 years have seen a resurgence in available funding

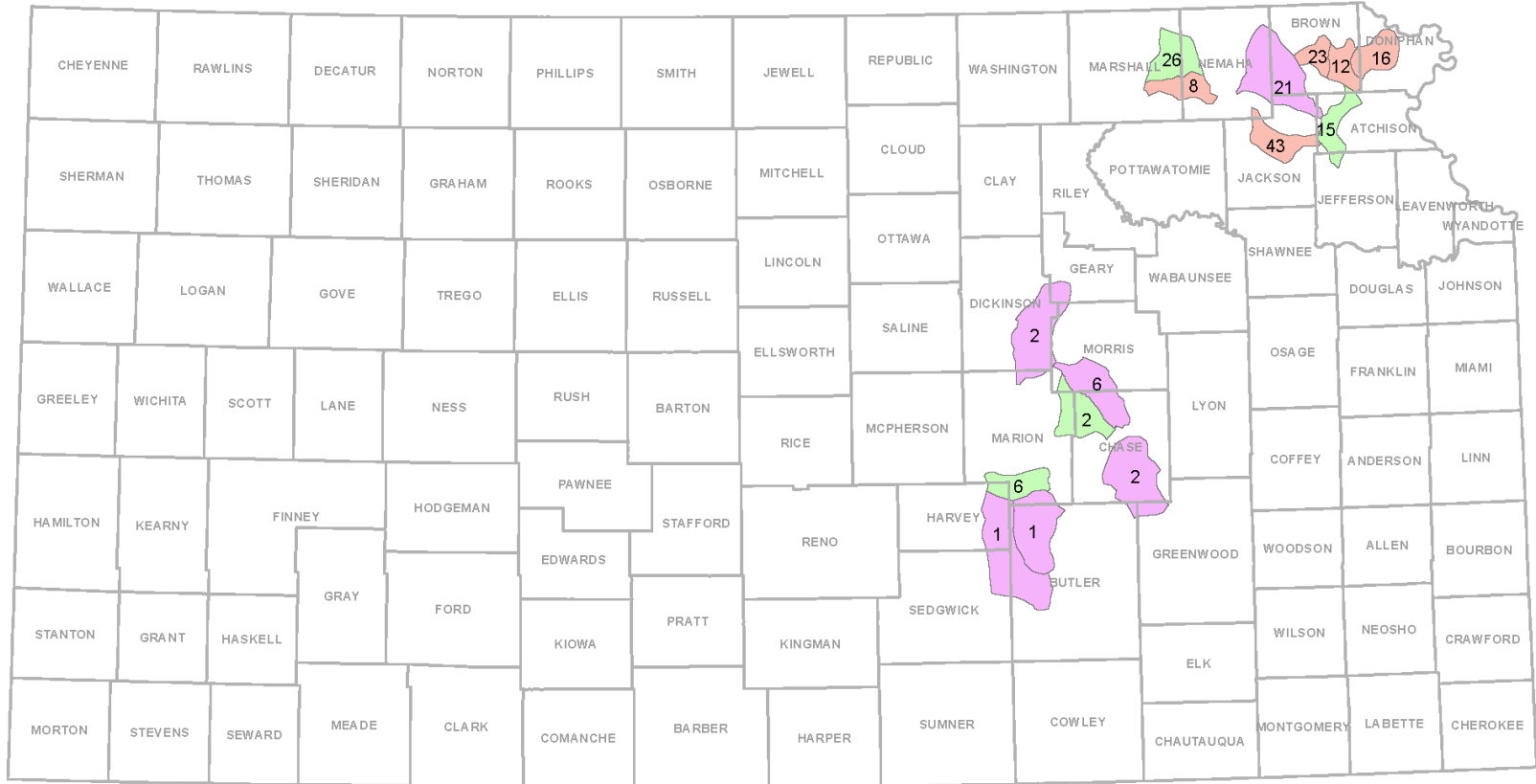


- ❖ Projects are approved in phases

- ❖ Planning 100%
- ❖ Design 100%
- ❖ Operations *
- ❖ Rehab 65%



Kansas NRCS PL-566 Watershed Operations (WSOP)



Watershed Operations

- 15 Active Work Plans
- 184 Dam Sites

FY17 - 102 Sites

 FY18 - 49 Sites

 Remaining - 33 Sites

Non-Discrimination Statement



In accordance with Federal civil rights law and U.S. Department of Agriculture (USDA) civil rights regulations and policies, the USDA, its Agencies, offices, and employees, and institutions participating in or administering USDA programs are prohibited from discriminating based on race, color, national origin, religion, sex, gender identity (including gender expression), sexual orientation, disability, age, marital status, family/parental status, income derived from a public assistance program, political beliefs, or reprisal or retaliation for prior civil rights activity, in any program or activity conducted or funded by USDA (not all bases apply to all programs). Remedies and complaint filing deadlines vary by program or incident.

Persons with disabilities who require alternative means of communication for program information (e.g., Braille, large print, audiotape, American Sign Language, etc.) should contact the responsible Agency or USDA's TARGET Center at (202) 720-2600 (voice and TTY) or contact USDA through the Federal Relay Service at (800) 877-8339. Additionally, program information may be made available in languages other than English.

To file a program discrimination complaint, complete the USDA Program Discrimination Complaint Form, AD-3027, found online at [How to File a Program Discrimination Complaint](#) and at any USDA office or write a letter addressed to USDA and provide in the letter all of the information requested in the form. To request a copy of the complaint form, call (866) 632-9992. Submit your completed form or letter to USDA by:

- (1) mail: U.S. Department of Agriculture
Office of the Assistant Secretary for Civil Rights
1400 Independence Avenue, SW
Washington, D.C. 20250-9410;
- (2) fax: (202) 690-7442; or
- (3) email: program.intake@usda.gov.

USDA is an equal opportunity provider, employer, and lender.



Natural
Resources
Conservation
Service

nrcs.usda.gov/