

## Joint Committee on State Building Construction

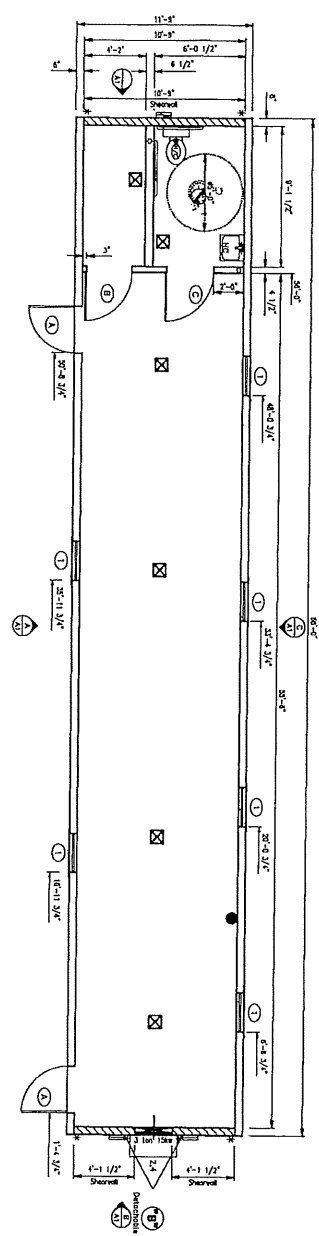
### Kansas Department of Corrections

December 14, 2020

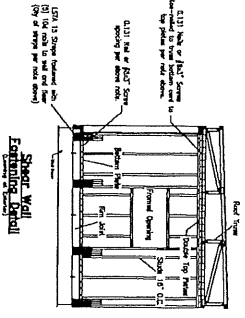
#### Overview for Committee on projects in-progress with KDOC

- Modular Education / Programming Building – Lansing Correctional Facility
  - placed adjacent to minimum custody unit at reconstructed Lansing
  - stick frame construction - approximately 750 square feet
  - under construction – placement in mid/late January
  - funded by Donnelly College to be donated to State of Kansas \$84K
  - provides much needed space for education and programming
  
- Kansas Correctional Industries Building – Hutchinson Correctional Facility
  - new industrial building – sited in higher custody portion of facility
  - metal building - approximately 30,000 square feet
  - in process of bidding / awarding bids
  - funded by Kansas Correctional Industries- estimated cost \$3.1M
  - creates opportunity for up to 150 workforce training positions
  
- Geriatric / Cognitive Care Unit – Winfield Correctional Facility
  - converting two buildings from Commission on Veterans Affairs
  - renovation and modification of both buildings – food service / dining
  - titles have been transferred- selected architects and engineers
  - funded through State General Funds – \$9.8M
  - provides 180 acute care beds and 60 substance abuse treatment beds
  
- Substance Abuse Treatment – Lansing Correctional Facility
  - repurpose housing unit at former East Unit – Lansing Correctional Facility
  - renovation and modification of existing structure and support building
  - have not advanced on project at this point
  - to be funded through State General Funds - \$3.5M
  - provides approximately 200 substance abuse treatment beds
  
- Request for Proposal – Statewide Facilities Condition Assessment
  - contract for comprehensive condition assessment of all facilities
  - identify conditions related to deferred maintenance and capital repairs
  - identify issues of non-compliance with building and life safety codes
  - rank and prioritize deficient conditions – estimate costs for corrections
  - RFP proposals December – selection by February – completion by August

DRAWING LEGEND	
1	1/2" x 4" x 8" Stud
2	1/2" x 4" x 8" Stud
3	1/2" x 4" x 8" Stud
4	1/2" x 4" x 8" Stud
5	1/2" x 4" x 8" Stud
6	1/2" x 4" x 8" Stud
7	1/2" x 4" x 8" Stud
8	1/2" x 4" x 8" Stud
9	1/2" x 4" x 8" Stud
10	1/2" x 4" x 8" Stud
11	1/2" x 4" x 8" Stud
12	1/2" x 4" x 8" Stud
13	1/2" x 4" x 8" Stud
14	1/2" x 4" x 8" Stud
15	1/2" x 4" x 8" Stud
16	1/2" x 4" x 8" Stud
17	1/2" x 4" x 8" Stud
18	1/2" x 4" x 8" Stud
19	1/2" x 4" x 8" Stud
20	1/2" x 4" x 8" Stud
21	1/2" x 4" x 8" Stud
22	1/2" x 4" x 8" Stud
23	1/2" x 4" x 8" Stud
24	1/2" x 4" x 8" Stud
25	1/2" x 4" x 8" Stud
26	1/2" x 4" x 8" Stud
27	1/2" x 4" x 8" Stud
28	1/2" x 4" x 8" Stud
29	1/2" x 4" x 8" Stud
30	1/2" x 4" x 8" Stud
31	1/2" x 4" x 8" Stud
32	1/2" x 4" x 8" Stud
33	1/2" x 4" x 8" Stud
34	1/2" x 4" x 8" Stud
35	1/2" x 4" x 8" Stud
36	1/2" x 4" x 8" Stud
37	1/2" x 4" x 8" Stud
38	1/2" x 4" x 8" Stud
39	1/2" x 4" x 8" Stud
40	1/2" x 4" x 8" Stud
41	1/2" x 4" x 8" Stud
42	1/2" x 4" x 8" Stud
43	1/2" x 4" x 8" Stud
44	1/2" x 4" x 8" Stud
45	1/2" x 4" x 8" Stud
46	1/2" x 4" x 8" Stud
47	1/2" x 4" x 8" Stud
48	1/2" x 4" x 8" Stud
49	1/2" x 4" x 8" Stud
50	1/2" x 4" x 8" Stud
51	1/2" x 4" x 8" Stud
52	1/2" x 4" x 8" Stud
53	1/2" x 4" x 8" Stud
54	1/2" x 4" x 8" Stud
55	1/2" x 4" x 8" Stud
56	1/2" x 4" x 8" Stud
57	1/2" x 4" x 8" Stud
58	1/2" x 4" x 8" Stud
59	1/2" x 4" x 8" Stud
60	1/2" x 4" x 8" Stud
61	1/2" x 4" x 8" Stud
62	1/2" x 4" x 8" Stud
63	1/2" x 4" x 8" Stud
64	1/2" x 4" x 8" Stud
65	1/2" x 4" x 8" Stud
66	1/2" x 4" x 8" Stud
67	1/2" x 4" x 8" Stud
68	1/2" x 4" x 8" Stud
69	1/2" x 4" x 8" Stud
70	1/2" x 4" x 8" Stud
71	1/2" x 4" x 8" Stud
72	1/2" x 4" x 8" Stud
73	1/2" x 4" x 8" Stud
74	1/2" x 4" x 8" Stud
75	1/2" x 4" x 8" Stud
76	1/2" x 4" x 8" Stud
77	1/2" x 4" x 8" Stud
78	1/2" x 4" x 8" Stud
79	1/2" x 4" x 8" Stud
80	1/2" x 4" x 8" Stud
81	1/2" x 4" x 8" Stud
82	1/2" x 4" x 8" Stud
83	1/2" x 4" x 8" Stud
84	1/2" x 4" x 8" Stud
85	1/2" x 4" x 8" Stud
86	1/2" x 4" x 8" Stud
87	1/2" x 4" x 8" Stud
88	1/2" x 4" x 8" Stud
89	1/2" x 4" x 8" Stud
90	1/2" x 4" x 8" Stud
91	1/2" x 4" x 8" Stud
92	1/2" x 4" x 8" Stud
93	1/2" x 4" x 8" Stud
94	1/2" x 4" x 8" Stud
95	1/2" x 4" x 8" Stud
96	1/2" x 4" x 8" Stud
97	1/2" x 4" x 8" Stud
98	1/2" x 4" x 8" Stud
99	1/2" x 4" x 8" Stud
100	1/2" x 4" x 8" Stud



7/16" OSB on exterior side of framing. Finish with 84 mesh at 6" O.C. at joints and 17" O.C. at intermediate. Stagger joints. (3) 2x4 LVL Strip each end of shear wall. (4) "Industria LSN strip locations")



**DOOR, WINDOW AND OPENING SCHEDULE**

MARK	QTY	DESCRIPTION	ROUGH OPENING	HEADERS
A	2	35000 Tall Edge Ins/Glass W/5000 safety glass lite W/5000 frame. 1st 8000 panic hardware W/12500000 keypad lock. 1st 12500000	36 1/4" x 80 1/4"	(2) 2x6 #2 spr. 4x4 post flat
B/C	2	35000 prefabricated noise core wood door W/4000 oak wood finish. 1 (8) Pan-Tec Passage 12500000 lower set. US2000 Grade 3. 1 (6)	36" x 82"	
1	8	Pan-Tec 670 30553 Vertical Slap Slap Slap W/5000. 1st E coating and white vinyl frame. Day screw and Dip cap	30 1/4" x 23 1/4"	(2) 2x4 #2 spr. on edge

Notes:  
 1. All structural headers shall be glued, fastened and laced on (1) 2x4/E back stud #2 spr. each side of opening.  
 2. Doors, windows and openings set and settle do not require structural header because of Unisys/headers carry the load.

APPROVED AS IS  REVISION  
 APPROVED AS NOTED  REVISION  
 REVISE AND RESUBMIT  REVISION  
 THIS DOCUMENT IS THE PROPERTY OF C&B CUSTOMER. IT IS TO BE USED ONLY FOR THE PROJECT AND SHALL NOT BE REPRODUCED OR TRANSMITTED IN ANY FORM OR BY ANY MEANS WITHOUT THE PRIOR WRITTEN PERMISSION OF C&B CUSTOMER.

See Building Cross Section

MODEL / SIZE: **1470 Classroom**  
**11'-9"x66'-0"**

SHEET DESCRIPTION: **Production Floor Plan**

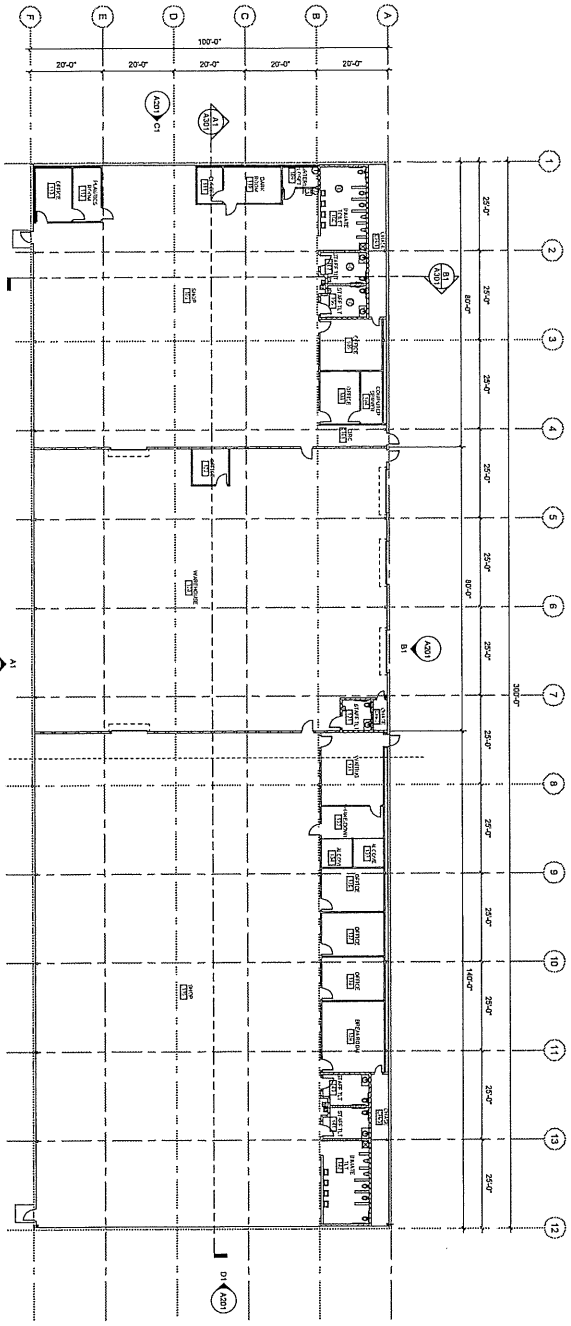
DATE: 10/1/2020  
 PLOT DATE: 10/15/2020 10:56 AM  
 SCALES REF: 1/4" = 1'-0"  
 DRAWN BY: SJK  
 SERIAL NUMBER: 20-2770  
 SHEET: A2

MANUFACTURER: **C&B MODULAR, INC.**  
 2224 Bloomingdale Drive  
 Bristol, Indiana 46507  
 PH: (574) 848-7300  
 FX: (574) 848-1950

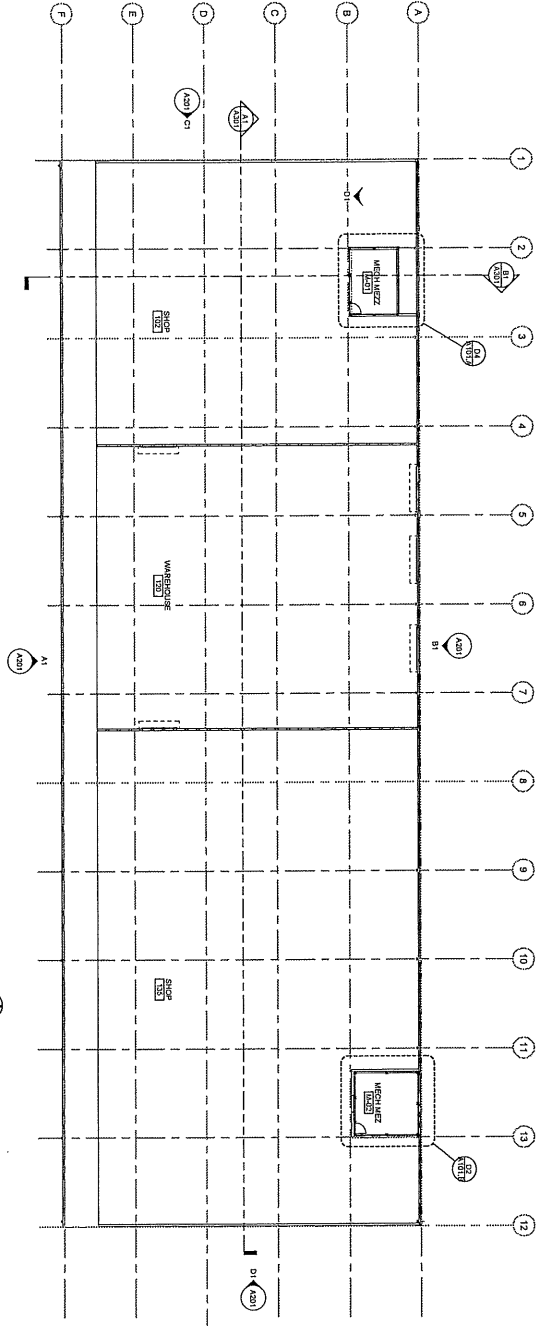
**MODULAR BUILDING INSTITUTE**

CUSTOMER: **North American Bulling**

THIS DOCUMENT AND ALL INFORMATION CONTAINED HEREIN ARE THE PROPRIETARY OF C&B CUSTOMER. THIS DOCUMENT AND THE INFORMATION CONTAINED HEREIN MAY NOT BE REPRODUCED, USED OR DISCLOSED IN ANY MANNER OR TO ANY EXTENT (EXCEPT BY OR TO C&B CUSTOMER) WITHOUT THE PRIOR WRITTEN AUTHORIZATION OF C&B CUSTOMER.



LEVEL 1 - COMPOSITE PLAN A1  
1/8" = 1'-0"



MEZZANINE COMPOSITE PLAN B1  
1/8" = 1'-0"

KANSAS DEPARTMENT OF CORRECTION  
**HUTCHINSON TEXTILES SHOP**

500 REFORMATORY ST.  
HUTCHINSON, KS 67501  
BUILDING NUMBER :

Date: 10-22-2020 Drawn By: Author

**TREANOR+H**

719 SW Van Buren St., Ste. 200  
Topeka, KS 66603  
Office: 785.235.0012  
Fax: 785.235.0013  
www.TreanorH.com

Department of Administration  
Office of Facilities & Property Management  
Design, Construction & Compliance  
100 Harrison, Suite 1200  
Topeka, Kansas 66603  
Phone 785-236-4199

COMPOSITE PLANS -
LEVEL 1 &
MEZZANINE
A101
PROGRESS DRAWINGS