

Capital Improvements Program

Fiscal Year 2015



FY 2015 Project Selection Process

- **Primary Focus: Preserve Building Assets**
- **Long-term Focus: Preserve Infrastructure**
 - Buildings must work with modern equipment
 - Buildings need good access to the roadways

Rehabilitation/Repair

7-3

- Total KDOT buildings
 - 963 buildings 2,851,853 sq ft

- People buildings – offices/labs
 - 206 buildings 1,306,521 sq ft
 - District, Areas, Subareas, Material Labs, Construction

- Support buildings
 - 757 buildings 1,545,332 sq ft
 - Chemical, equipment, materials storage
 - Vehicle wash buildings

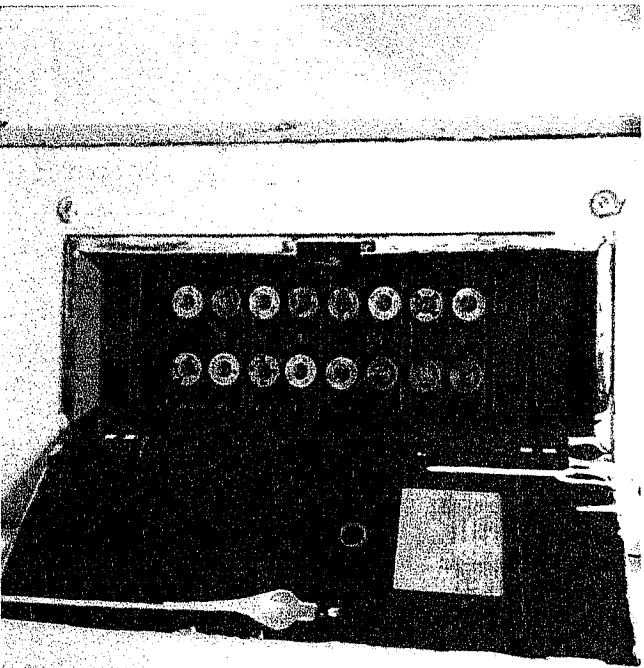
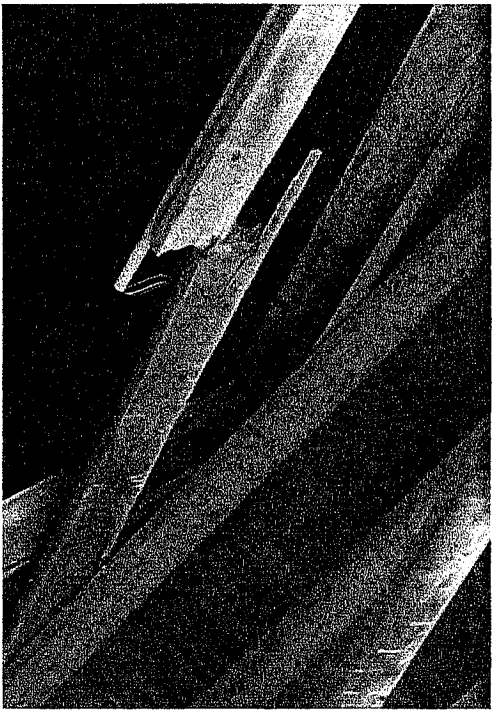
Rehabilitation/Repair

7-4

Typical Rehabilitation/Repair expenditures:

- Door and Window Repair/Replacement
- Heating, AC Repair/Replacement
- Lighting and Electrical Repair/Replacement
- Interior & Exterior Painting
- Plumbing Repair/Replacement
- Roofing Repairs
- Overhead Door Repair/Replacement
- Salt/Sand Building Repair
- Fencing Repairs/Yard Security
- Parking Lot Repair/Resurfacing

Example Rehab/Repairs



Reroofs

2-6

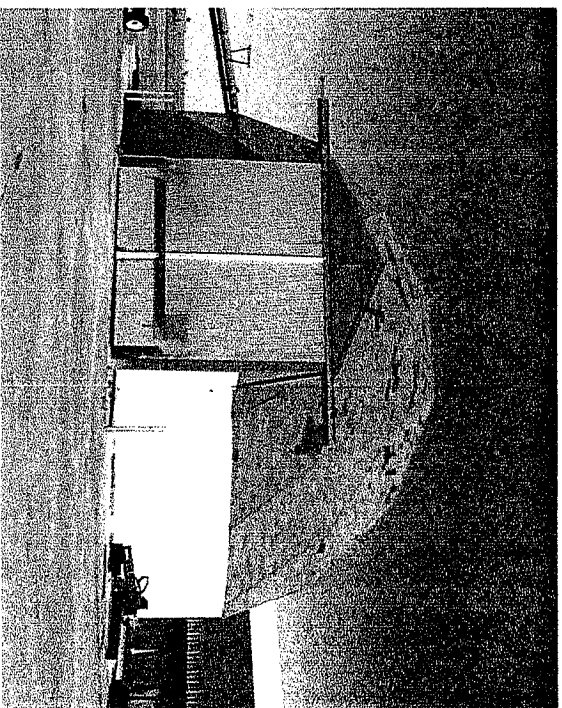
- FY2015 Reroofs:

Osage City Salt Dome
Lindsborg Subarea
Lawrence Salt Dome
Blaine Salt Dome
Wamego Salt Dome

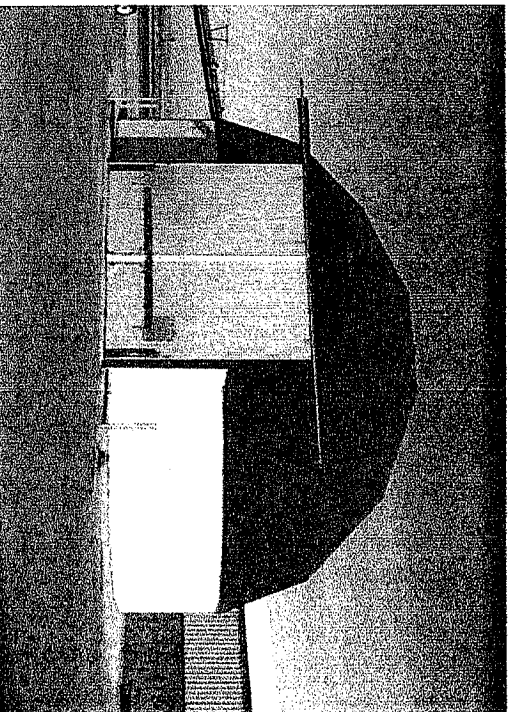
Osborne Salt Dome
Gage Const. Office
Mankato Salt Dome
Wichita West Subarea
Beloit Salt Dome

Reroofs

- Typical Salt Dome before reroof



- Typical Salt Dome after reroof

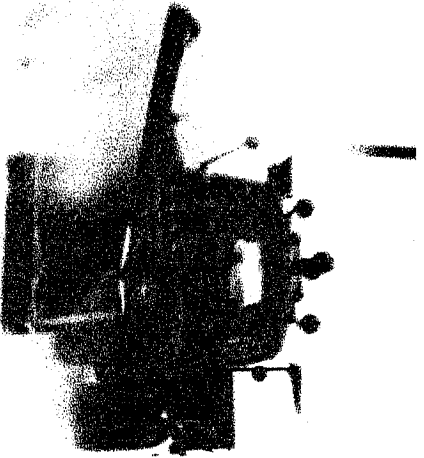


Subarea Bay Modernization

- FY2015 Subarea Projects:
 - Russell
 - Syracuse
 - Larned
 - Ulysses

Subarea Bay Modernization

7-9



- 1950's Plow Truck
 - 23,500 GVW
 - 8 ft. wide plow
 - 2 cubic yd. spreader
 - approx. 26 ft. long

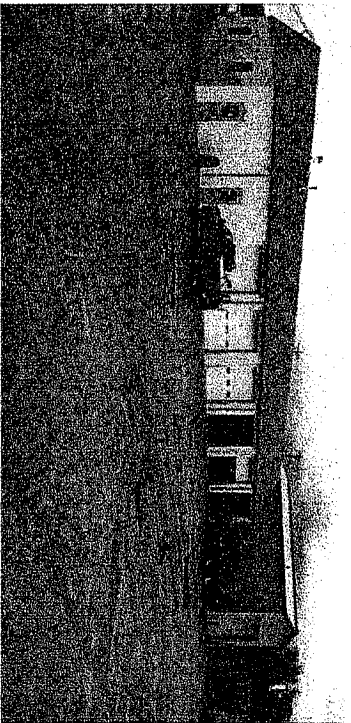


- Modern Plow Truck
 - 53,000 GVW
 - 12 ft. wide plow
 - 9 cubic yd. spreader
 - approx. 40 ft. long

Typical Plow Trucks: 1950's vs. 2012

Subarea Bay Modernization

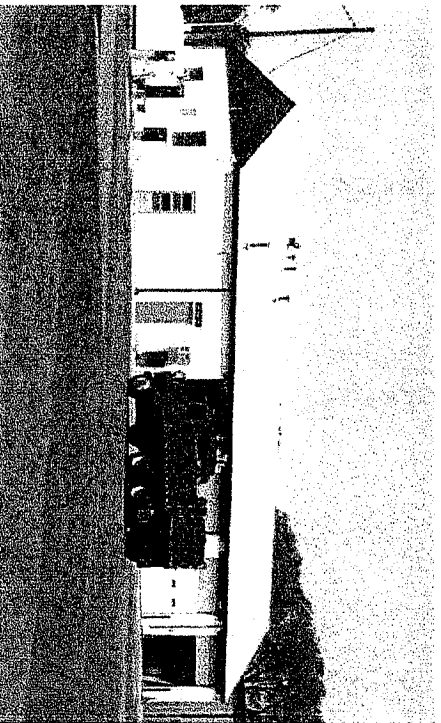
7-10



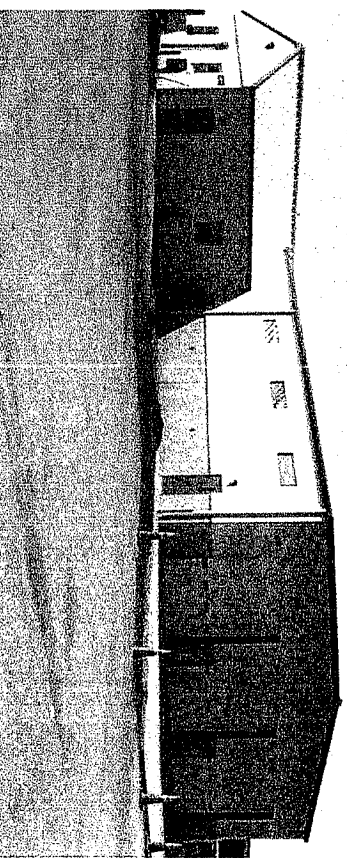
• Style B - Before



Style B -- After



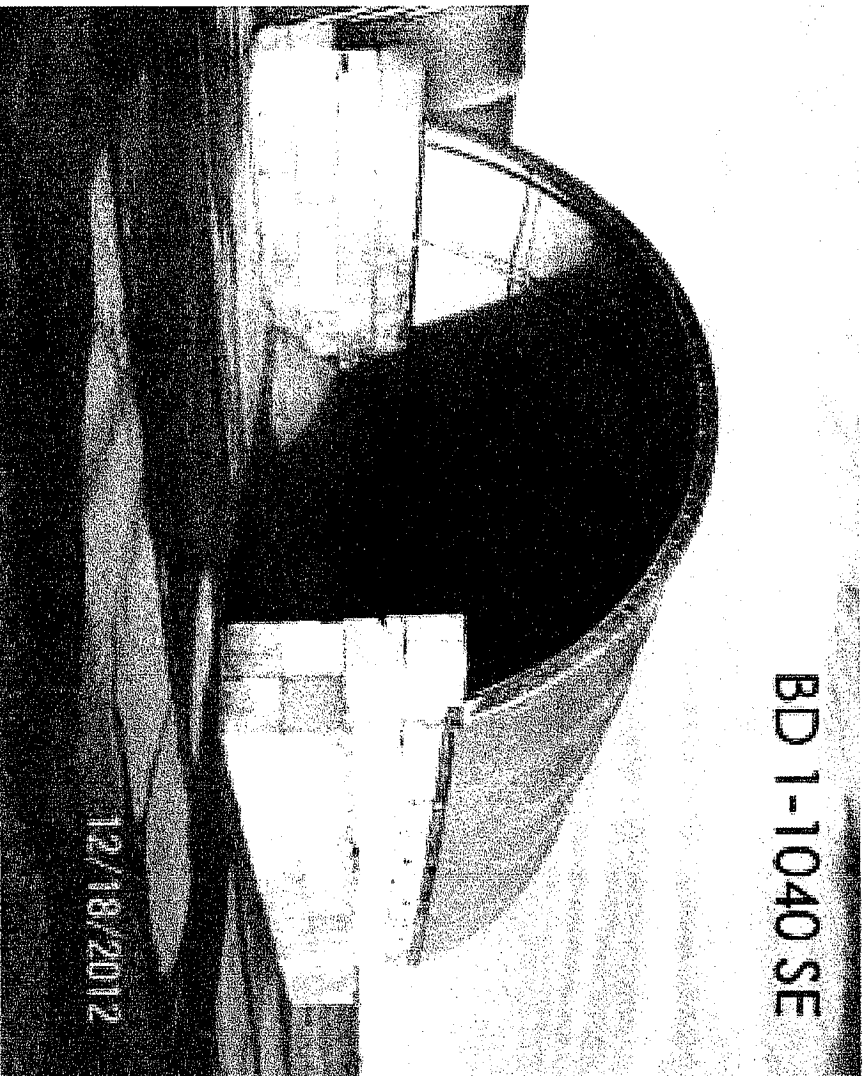
• Style D - Before



Style D - After

Remote Chemical Storage Bunker

7-11



- Increase efficiency –
Minimize dead-heading
- Increase range –
Remote location
increases area each
truck can cover
- Maximize benefit –
Multiple routes share
each bunker
- Minimize costs –
Bunkers are assembled
by KDOT

Typical Chemical Storage Bunker