

# Report on School Board Election Systems

Kansas Association of School Boards

Jim Hays, Research Specialist

February 7, 2013

**METHOD OF ELECTION:** Four options are available in K.S.A. 72-8009.

- (1) Two-member districts, with three board members in each district, and one board member at large;
- (2) Three-member districts, with two board members in each district and one at-large;
- (3) Six-member districts with one board member in each district and one at-large; or
- (4) All board members elected at-large.

With any **METHOD OF ELECTION**, there are also options for which **VOTING PLAN** a school board may use: K.S.A. 72-8003.

Voting Plan A which allows all voters to vote for all candidates in both the general and primary election.

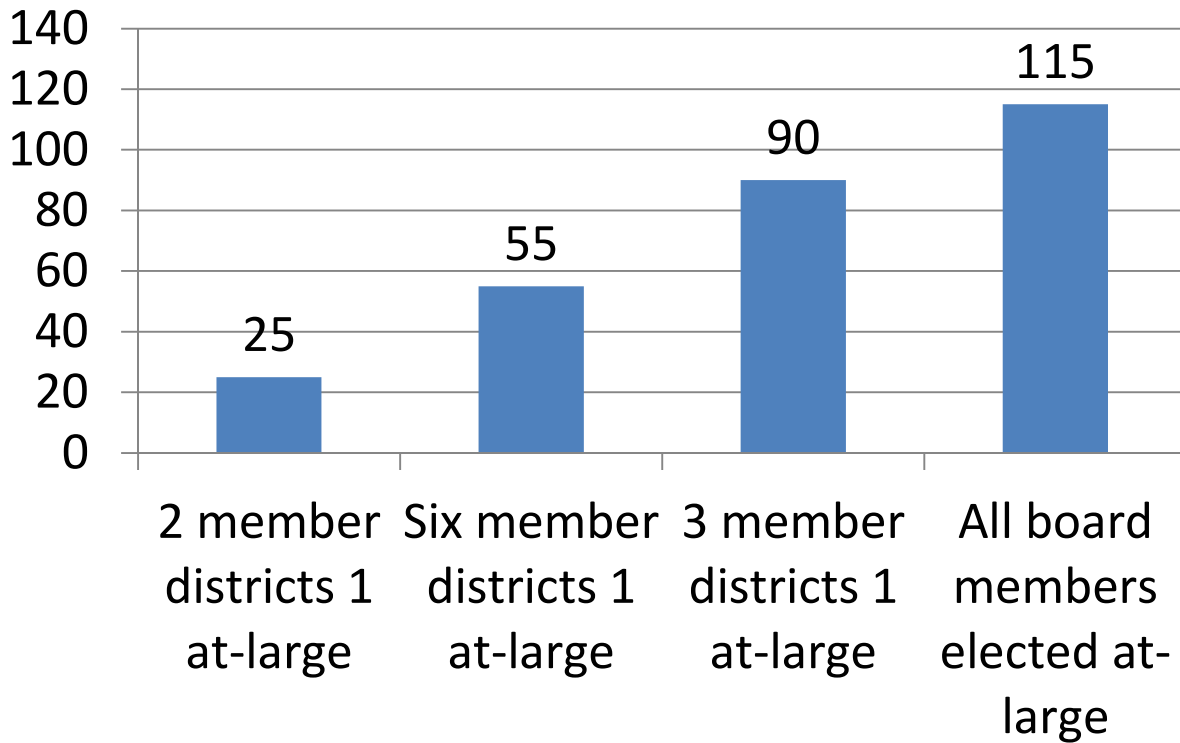
Voting Plan B which allows all voters to vote for all positions in the general election, but allows voters to vote only for candidates in their member district in primary elections.

Voting Plan C which allows voters to vote for only candidates in their member district in both the general and primary elections.

## Summary of Current Use:

Method of Election	USDs	Voting Plan		
		A	B	C
2 member districts 1 at-large	25	4	8	13
Six member districts 1 at-large	55	5	18	32
3 member districts 1 at-large	90	12	63	15
All board members elected at-large	115	115	0	0
	<u>285</u>			
Ft. Leavenworth USD 207 has 3 person appointed board, by statute				

## Method of Election: Kansas USDs



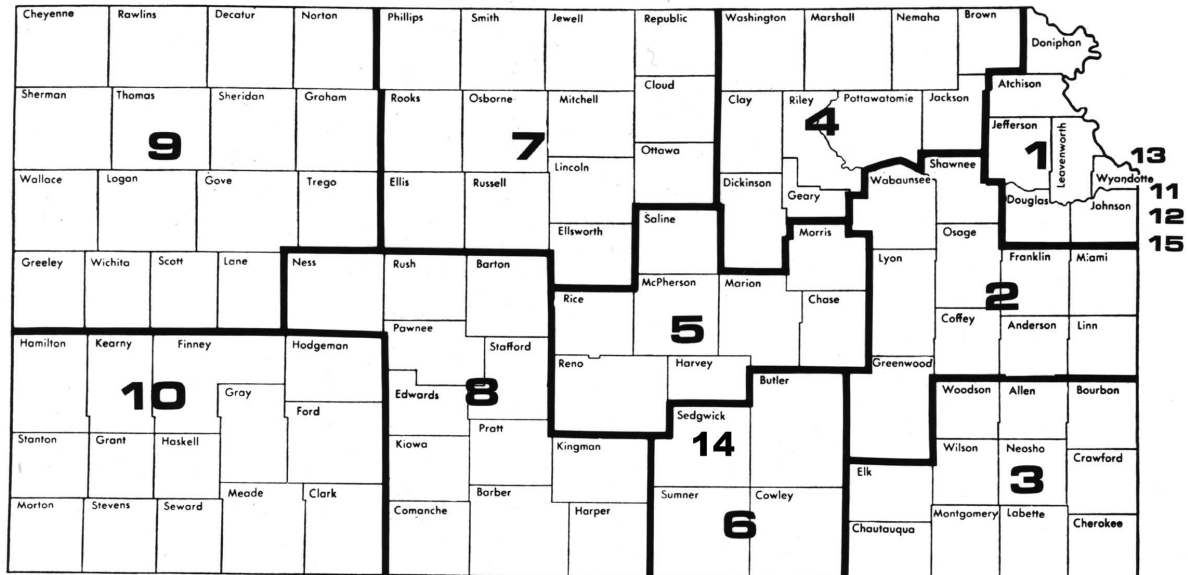
### Do certain size districts use a particular Method of Election?

Enrollment Category	USD	2	3	All	Six
		member districts 1 at-large	member districts 1 at-large	board members elected at-large	member districts 1 at-large
< 1,725	233	24	76	85	48
1,725 - 10,000	46	1	12	29	4
> 10,000	6		2	1	3
	<u>285</u>				

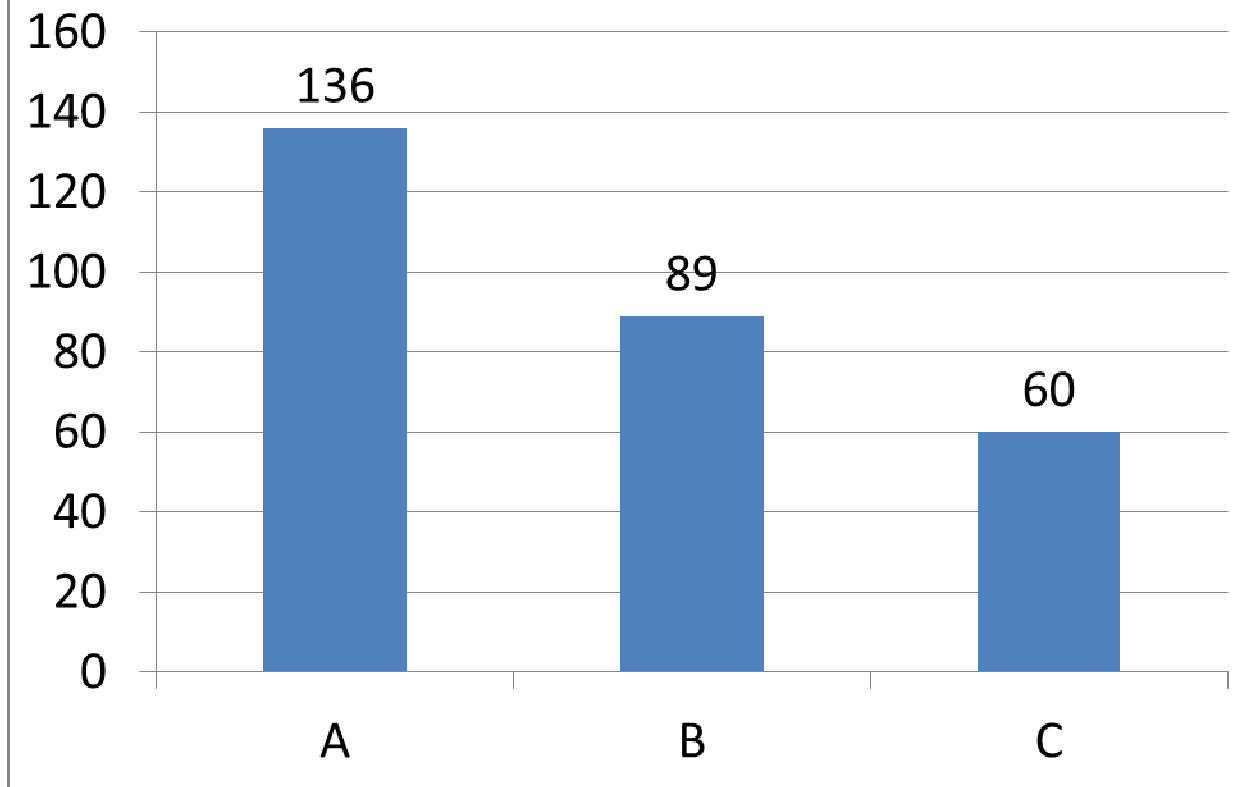
## Do Certain Areas of Kansas use a particular Method of Election?

KASB Region	USD	2	3	All	Six
		member districts 1 at-large	member districts 1 at-large	board members elected at-large	member districts 1 at-large
1	29	2	13	10	4
2	33	4	15	4	10
3	32	2	9	14	7
4	27	3	10	3	11
5	30	1	10	14	5
6	31	1	12	15	3
7	26	4	11	7	4
8	25	4	5	10	6
9	25	3	1	19	2
10	27	1	4	19	3
<u>285</u>					

### KASB Regions



## Voting Plan: Kansas USDs



**Do certain size districts use a particular voting plan?**

Enrollment Category	USD	Voting Plan		
		A	B	C
< 1,725	233	104	74	55
1,725 - 10,000	46	31	11	4
> 10,000	6	1	4	1
	<u>285</u>			

**Do certain areas of Kansas use a particular voting plan?**

Region	USDs	Voting Plan		
		A	B	C
1	29	12	12	5
2	33	9	15	9
3	32	15	12	5
4	27	5	12	10
5	30	15	10	5
6	31	17	11	3
7	26	11	5	10
8	25	11	6	8
9	25	22	1	2
10	27	19	5	3
<u>285</u>				

**Detailed Listing of all Unified School Districts in Kansas:**

USD	USD Name	Method of Election	Voting Plan
101	Erie-Galesburg	3 member districts 1 at-large	B
102	Cimarron-Ensign	All board members elected at-large	A
103	Cheylin	All board members elected at-large	A
105	Rawlins County	Six member districts 1 at-large	A
106	Western Plains	2 member districts 1 at-large	C
107	Rock Hills	2 member districts 1 at-large	C
108	Washington County	Six member districts 1 at-large	C
109	Republic County	3 member districts 1 at-large	C
110	Thunder Ridge	2 member districts 1 at-large	C
111	Doniphan West	2 member districts 1 at-large	C
112	Central Plains	Six member districts 1 at-large	C
113	Prairie Hills	Six member districts 1 at-large	B
114	Riverside	2 member districts 1 at-large	C

USD	USD Name	Method of Election	Voting Plan
115	Nemaha Central	Six member districts 1 at-large	C
200	Greeley County	All board members elected at-large	A
202	Turner-Kansas City	All board members elected at-large	A
203	Piper-Kansas City	All board members elected at-large	A
204	Bonner Springs	All board members elected at-large	A
205	Bluestem	All board members elected at-large	A
206	Remington-Whitewater	All board members elected at-large	A
207	Ft. Leavenworth		
208	WaKeeney	All board members elected at-large	A
209	Moscow	All board members elected at-large	A
210	Hugoton	All board members elected at-large	A
211	Norton Community	2 member districts 1 at-large	A
212	Northern Valley	2 member districts 1 at-large	C
214	Ulysses	Six member districts 1 at-large	B
215	Lakin	All board members elected at-large	A
216	Deerfield	All board members elected at-large	A
217	Rolla	Six member districts 1 at-large	C
218	Elkhart	All board members elected at-large	A
219	Minneola	All board members elected at-large	A
220	Ashland	All board members elected at-large	A
223	Barnes	Six member districts 1 at-large	C
224	Clifton-Clyde	Six member districts 1 at-large	C
225	Fowler	All board members elected at-large	A
226	Meade	All board members elected at-large	A
227	Hodgeman County	All board members elected at-large	A
229	Blue Valley	Six member districts 1 at-large	B
230	Spring Hill	3 member districts 1 at-large	B
231	Gardner-Edgerton	3 member districts 1 at-large	B
232	De Soto	Six member districts 1 at-large	B
233	Olathe	3 member districts 1 at-large	B
234	Fort Scott	Six member districts 1 at-large	A
235	Uniontown	Six member districts 1 at-large	B
237	Smith Center	3 member districts 1 at-large	B
239	North Ottawa County	3 member districts 1 at-large	A
240	Twin Valley	3 member districts 1 at-large	A
241	Wallace County	All board members elected at-large	A
242	Weskan	All board members elected at-large	A
243	Lebo-Waverly	2 member districts 1 at-large	B
244	Burlington	Six member districts 1 at-large	C
245	LeRoy-Gridley	2 member districts 1 at-large	A

USD	USD Name	Method of Election	Voting Plan
246	Northeast	Six member districts 1 at-large	B
247	Cherokee	Six member districts 1 at-large	B
248	Girard	3 member districts 1 at-large	B
249	Frontenac	All board members elected at-large	A
250	Pittsburg	All board members elected at-large	A
251	North Lyon County	3 member districts 1 at-large	C
252	Southern Lyon County	2 member districts 1 at-large	B
253	Emporia	All board members elected at-large	A
254	Barber County North	Six member districts 1 at-large	C
255	South Barber	2 member districts 1 at-large	C
256	Marmaton Valley	Six member districts 1 at-large	C
257	Iola	Six member districts 1 at-large	C
258	Humboldt	All board members elected at-large	A
259	Wichita	Six member districts 1 at-large	B
260	Derby	All board members elected at-large	A
261	Haysville	All board members elected at-large	A
262	Valley Center	All board members elected at-large	A
263	Mulvane	3 member districts 1 at-large	B
264	Clearwater	All board members elected at-large	A
265	Goddard	All board members elected at-large	A
266	Maize	3 member districts 1 at-large	B
267	Renwick	3 member districts 1 at-large	B
268	Cheney	All board members elected at-large	A
269	Palco	Six member districts 1 at-large	C
270	Plainville	All board members elected at-large	A
271	Stockton	All board members elected at-large	A
272	Waconda	3 member districts 1 at-large	B
273	Beloit	Six member districts 1 at-large	B
274	Oakley	All board members elected at-large	A
275	Triplains	All board members elected at-large	A
281	Graham County	All board members elected at-large	A
282	West Elk	2 member districts 1 at-large	C
283	Elk Valley	All board members elected at-large	A
284	Chase County	3 member districts 1 at-large	C
285	Cedar Vale	All board members elected at-large	A
286	Chautauqua County	3 member districts 1 at-large	C
287	West Franklin	3 member districts 1 at-large	B
288	Central Heights	3 member districts 1 at-large	B
289	Wellsville	3 member districts 1 at-large	B
290	Ottawa	All board members elected at-large	A

USD	USD Name	Method of Election	Voting Plan
291	Grinnell	All board members elected at-large	A
292	Wheatland	All board members elected at-large	A
293	Quinter	Six member districts 1 at-large	C
294	Oberlin	All board members elected at-large	A
297	St. Francis	3 member districts 1 at-large	A
298	Lincoln	2 member districts 1 at-large	C
299	Sylvan Grove	3 member districts 1 at-large	A
300	Comanche County	3 member districts 1 at-large	B
303	Ness City	All board members elected at-large	A
305	Salina	All board members elected at-large	A
306	Southeast Of Saline	3 member districts 1 at-large	B
307	Ell-Saline	3 member districts 1 at-large	C
308	Hutchinson	All board members elected at-large	A
309	Nickerson	All board members elected at-large	A
310	Fairfield	All board members elected at-large	A
311	Pretty Prairie	3 member districts 1 at-large	C
312	Haven	Six member districts 1 at-large	B
313	Buhler	3 member districts 1 at-large	B
314	Brewster	All board members elected at-large	A
315	Colby	All board members elected at-large	A
316	Golden Plains	All board members elected at-large	A
320	Wamego	Six member districts 1 at-large	C
321	Kaw Valley	3 member districts 1 at-large	B
322	Onaga-Havensville-Wheaton	Six member districts 1 at-large	C
323	Rock Creek	Six member districts 1 at-large	C
325	Phillipsburg	3 member districts 1 at-large	C
326	Logan	Six member districts 1 at-large	C
327	Ellsworth	3 member districts 1 at-large	A
329	Mill Creek Valley	Six member districts 1 at-large	C
330	Mission Valley	3 member districts 1 at-large	B
331	Kingman - Norwich	Six member districts 1 at-large	C
332	Cunningham	Six member districts 1 at-large	C
333	Concordia	3 member districts 1 at-large	B
334	Southern Cloud	2 member districts 1 at-large	B
335	North Jackson	3 member districts 1 at-large	B
336	Holton	Six member districts 1 at-large	A
337	Royal Valley	3 member districts 1 at-large	A
338	Valley Falls	3 member districts 1 at-large	B
339	Jefferson County North	3 member districts 1 at-large	B
340	Jefferson West	3 member districts 1 at-large	B



USD	USD Name	Method of Election	Voting Plan
341	Oskaloosa	3 member districts 1 at-large	A
342	McLouth	3 member districts 1 at-large	B
343	Perry	3 member districts 1 at-large	B
344	Pleasanton	All board members elected at-large	A
345	Seaman	2 member districts 1 at-large	C
346	Jayhawk	Six member districts 1 at-large	C
347	Kinsley-Offerle	All board members elected at-large	A
348	Baldwin City	Six member districts 1 at-large	C
349	Stafford	All board members elected at-large	A
350	St. John-Hudson	3 member districts 1 at-large	B
351	Macksville	2 member districts 1 at-large	A
352	Goodland	All board members elected at-large	A
353	Wellington	3 member districts 1 at-large	C
355	Ellinwood	All board members elected at-large	A
356	Conway Springs	3 member districts 1 at-large	B
357	Belle Plaine	3 member districts 1 at-large	A
358	Oxford	3 member districts 1 at-large	B
359	Argonia	Six member districts 1 at-large	B
360	Caldwell	All board members elected at-large	A
361	Anthony-Harper	3 member districts 1 at-large	B
362	Prairie View	Six member districts 1 at-large	C
363	Holcomb	3 member districts 1 at-large	B
364	Marysville	2 member districts 1 at-large	B
365	Garnett	Six member districts 1 at-large	C
366	Woodson	3 member districts 1 at-large	B
367	Osawatomie	3 member districts 1 at-large	A
368	Paola	3 member districts 1 at-large	B
369	Burrton	All board members elected at-large	A
371	Montezuma	All board members elected at-large	A
372	Silver Lake	All board members elected at-large	A
373	Newton	All board members elected at-large	A
374	Sublette	All board members elected at-large	A
375	Circle	Six member districts 1 at-large	C
376	Sterling	All board members elected at-large	A
377	Atchison County	3 member districts 1 at-large	B
378	Riley County	Six member districts 1 at-large	B
379	Clay Center	2 member districts 1 at-large	B
380	Vermillion	3 member districts 1 at-large	B
381	Spearville	3 member districts 1 at-large	B
382	Pratt	All board members elected at-large	A

USD	USD Name	Method of Election	Voting Plan
383	Manhattan-Ogden	All board members elected at-large	A
384	Blue Valley-Randolph	3 member districts 1 at-large	C
385	Andover	3 member districts 1 at-large	B
386	Madison-Virgil	3 member districts 1 at-large	B
387	Altoona-Midway	Six member districts 1 at-large	B
388	Ellis	All board members elected at-large	A
389	Eureka	Six member districts 1 at-large	C
390	Hamilton	Six member districts 1 at-large	B
392	Osborne County	3 member districts 1 at-large	C
393	Solomon	3 member districts 1 at-large	B
394	Rose Hill	All board members elected at-large	A
395	LaCrosse	Six member districts 1 at-large	C
396	Douglass	All board members elected at-large	A
397	Centre	Six member districts 1 at-large	C
398	Peabody-Burns	All board members elected at-large	A
399	Paradise	All board members elected at-large	A
400	Smoky Valley	Six member districts 1 at-large	B
401	Chase-Raymond	All board members elected at-large	A
402	Augusta	3 member districts 1 at-large	C
403	Otis-Bison	3 member districts 1 at-large	B
404	Riverton	3 member districts 1 at-large	B
405	Lyons	All board members elected at-large	A
407	Russell County	All board members elected at-large	A
408	Marion-Florence	3 member districts 1 at-large	B
409	Atchison	All board members elected at-large	A
410	Durham-Hillsboro-Lehigh	3 member districts 1 at-large	C
411	Goessel	Six member districts 1 at-large	B
412	Hoxie Community	All board members elected at-large	A
413	Chanute	All board members elected at-large	A
415	Hiawatha	3 member districts 1 at-large	B
416	Louisburg	Six member districts 1 at-large	C
417	Morris County	2 member districts 1 at-large	B
418	McPherson	All board members elected at-large	A
419	Canton-Galva	3 member districts 1 at-large	B
420	Osage City	3 member districts 1 at-large	B
421	Lyndon	3 member districts 1 at-large	B
422	Kiowa County	All board members elected at-large	A
423	Moundridge	All board members elected at-large	A
426	Pike Valley	3 member districts 1 at-large	C
428	Great Bend	All board members elected at-large	A

USD	USD Name	Method of Election	Voting Plan
429	Troy	All board members elected at-large	A
430	South Brown County	Six member districts 1 at-large	C
431	Hoisington	3 member districts 1 at-large	B
432	Victoria	All board members elected at-large	A
434	Santa Fe Trail	3 member districts 1 at-large	B
435	Abilene	3 member districts 1 at-large	B
436	Caney Valley	2 member districts 1 at-large	B
437	Auburn Washburn	Six member districts 1 at-large	B
438	Skyline	All board members elected at-large	A
439	Sedgwick	3 member districts 1 at-large	B
440	Halstead	3 member districts 1 at-large	B
443	Dodge City	All board members elected at-large	A
444	Little River	Six member districts 1 at-large	A
445	Coffeyville	All board members elected at-large	A
446	Independence	All board members elected at-large	A
447	Cherryvale-Thayer	All board members elected at-large	A
448	Inman	All board members elected at-large	A
449	Easton	3 member districts 1 at-large	B
450	Shawnee Heights	3 member districts 1 at-large	B
452	Stanton County	3 member districts 1 at-large	B
453	Leavenworth	All board members elected at-large	A
454	Burlingame	3 member districts 1 at-large	A
456	Marais des Cygnes Valley	Six member districts 1 at-large	A
457	Garden City	All board members elected at-large	A
458	Basehor-Linwood	3 member districts 1 at-large	A
459	Bucklin	All board members elected at-large	A
460	Hesston	All board members elected at-large	A
461	Neodesha	All board members elected at-large	A
462	Central	3 member districts 1 at-large	B
463	Udall	2 member districts 1 at-large	A
464	Tonganoxie	3 member districts 1 at-large	C
465	Winfield	All board members elected at-large	A
466	Scott County	All board members elected at-large	A
467	Leoti	2 member districts 1 at-large	B
468	Healy	All board members elected at-large	A
469	Lansing	All board members elected at-large	A
470	Arkansas City	All board members elected at-large	A
471	Dexter	3 member districts 1 at-large	B
473	Chapman	3 member districts 1 at-large	B
474	Haviland	All board members elected at-large	A

USD	USD Name	Method of Election	Voting Plan
475	Geary County Schools	All board members elected at-large	A
476	Copeland	All board members elected at-large	A
477	Ingalls	All board members elected at-large	A
479	Crest	3 member districts 1 at-large	A
480	Liberal	All board members elected at-large	A
481	Rural Vista	2 member districts 1 at-large	C
482	Dighton	All board members elected at-large	A
483	Kismet-Plains	2 member districts 1 at-large	C
484	Fredonia	3 member districts 1 at-large	C
487	Herington	All board members elected at-large	A
489	Hays	All board members elected at-large	A
490	El Dorado	All board members elected at-large	A
491	Eudora	All board members elected at-large	A
492	Flinthills	3 member districts 1 at-large	B
493	Columbus	3 member districts 1 at-large	B
494	Syracuse	Six member districts 1 at-large	C
495	Ft. Larned	Six member districts 1 at-large	C
496	Pawnee Heights	2 member districts 1 at-large	C
497	Lawrence	All board members elected at-large	A
498	Valley Heights	3 member districts 1 at-large	B
499	Galena	All board members elected at-large	A
500	Kansas City	All board members elected at-large	A
501	Topeka	3 member districts 1 at-large	B
502	Lewis	Six member districts 1 at-large	B
503	Parsons	All board members elected at-large	A
504	Oswego	All board members elected at-large	A
505	Chetopa-St. Paul	3 member districts 1 at-large	B
506	Labette County	3 member districts 1 at-large	B
507	Satanta	3 member districts 1 at-large	B
508	Baxter Springs	All board members elected at-large	A
509	South Haven	All board members elected at-large	A
511	Attica	All board members elected at-large	A
512	Shawnee Mission	Six member districts 1 at-large	C