



Emergency Drought Livestock Water Supply Initiative

Sign Up Ending September 15, 2012

<u>Applications Received</u>	<u>Dollars Requested</u>
3,244	\$8,073,734

<u>NPS, WR and DWR Funds</u>	<u>Dollars Allocated</u>
Area 1 (Northwest Kansas)	\$204,069
Area 2 (Southwest Kansas)	\$168,267
Area 3 (Central Kansas)	\$246,880
Area 4 (Northeast Kansas)	\$256,992
Area 5 (Southeast Kansas)	\$205,786
District Funds Used (NPS/WR)	\$176,361
<u>Watershed District Allocation</u>	<u>\$260,000</u>
Total Funding for Entire Project	\$1,512,355

<u>Approved Applications</u>	<u>Dollars Approved*</u>
579	\$1,472,355
Cost-share Dollars Paid	\$557,299
Percent of Approved Applications Paid	38 Percent

**An additional \$40,000 has been made available from a watershed district that will be added to approvals.*

Applications Awaiting Funding As of January 9, 2013

<u>Applications</u>	<u>Dollars Requested</u>
2,448	\$6,089,674

Applications That Declined Cost-Share or Were Not Eligible Upon Field Visit

<u>Applications</u>	<u>Dollars Requested</u>
217	\$511,705

Emergency Drought Livestock Water Supply Initiative

UPDATE ON USDA NRCS WATER SUPPLY INITIATIVES

The U.S. Department of Agriculture Natural Resources Conservation Service (NRCS) has also worked to address challenges related to livestock water supplies. There are two targeted efforts available through NRCS.

The first NRCS initiative is a priority effort within the existing Environmental Quality Incentives Program (EQIP) to address emergency drought livestock water supplies. The second is a new pilot program for Kansas and Colorado announced by USDA in December that will exclusively target renovation of existing ponds. Neither effort is currently in implementation phase. However, both efforts are progressing.

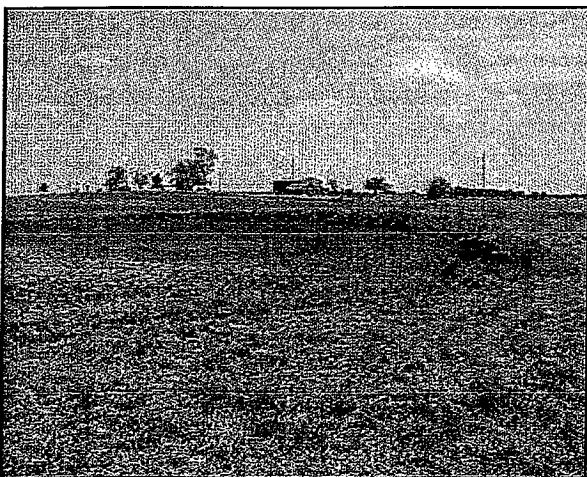
Currently, USDA NRCS in Washington, D.C., is finalizing the application screening criteria that will be utilized to prioritize and rank projects in the two-state pond renovation pilot project. Since the announcement of the pilot, NRCS has drafted a practice specification for pond clean-out and an additional practice to address the spreading of the removed sediment.

NRCS is projecting that a sign-up for the pilot program could begin soon and it is forecasted to be 30 days in length. An internal review and ranking will occur after the close of the sign-up and notice to producers of approved applications will follow.

Kansas NRCS utilized the application inventory from the Kansas Department of Agriculture's Division of Conservation as supporting documents for the pilot program funding request. Actual amounts of initiative funding will be determined after the sign-up has completed.

Pond Renovation in Pictures

Below are before and after photos of a pond renovation project completed in 2012 as part of the KDA Division of Conservation Emergency Livestock Water Supply Initiative.



Before



After



Kansas Center for Sustainable Agriculture and Alternative Crops

Report to the Kansas Legislature: 2012 Activity

KCSAAC Enabling Legislation

KSA 76-4, 103 – "...Functions and duties of the center of excellence on sustainable agriculture and alternative crops shall include but not be limited to:

- Emphasizing research, education, outreach and marketing for sustainable agriculture and alternative food, fiber and medicinal crops.
- Assisting farmers to increase their share of the food system dollar.
- Collecting and analyzing basic information on the Kansas food system and opportunities for production and direct marketing.
- Focusing research on value added processes and new crops that offer low-volume, high margin niche opportunities.
- Assisting small farmers to access lower input costs through a delivery system with expanded access to sustainable agricultural practices.
- Marketing assistance to promote products produced and processed in Kansas.
- Expanding small farm research to include: Organic products; less capital intensive investments; energy saving technology; and agricultural practices that reduce soil erosion and restore soil health.
- Developing and distributing a guide of all state services for small farms and value added agriculture

Highlights from 2012

Education & Outreach

Assisted with educational opportunities for Kansas producers to learn about managing and marketing their products. Opportunities included:

- Managing Drought Risk on the Ranch – Kansas Winter Grazing Conference
- Kansas Grazing Workshops - 2 intensive two-day workshops
- Farmers Market Webinar Series – Topics were:
 - ◆ Is There Profit at the End of the Tunnel?
 - ◆ Market Customers Eat with Their Eyes (and their noses, and hands, and ears)
 - ◆ Post Harvest Handling: Keeping It Fresh
 - ◆ Direct Marketing 101: Farmers Markets and Other Venues
 - ◆ Risk Management for Farmers Markets: Protecting the Public and Vendors and the Market Organization
- High Tunnel Building Workshop at Red Tractor Farm, Lawrence, Kansas
- High Tunnel Basics - a series of videos containing information for producers interested in the season-extending benefits of high tunnels for growing produce.
- Healthy Farms Healthy People: Kansas Agriculture & Health Summit

KCSAAC Report: 2012 Activity

Highlights from 2012 - continued

Education & Outreach - continued

- Organic Farming Forum: Resources, Research and Marketing for Organic Agriculture in Kansas

Research

Expanded small farm research at Kansas State University. Research results will be available in late 2013. Grants funded:

- Willow Lake Student Horticulture Research Farm
 - Organic Field Crop Production Curriculum for the Dept. of Agronomy/Agronomy Learning Farm
 - Development and Adoption of No-Till and Minimum Tillage Vegetable Production Systems
 - Assessment of Nitrogen Dynamics in a Wheat, Cover Crop, Sorghum, Soybean Rotation
 - Evaluating Local Food System of Manhattan, KS and Identifying Market Opportunities for Producers with Retail Grocers, Schools, and Hospitals
 - Analysis of Black Walnut Cultivars Comparing Flavor Variability Over Different Seasons

Marketing Assistance

Participated in activities that will ultimately help farmers promote and distribute agricultural products, including:

- Strategic Marketing Workshop for Livestock Producers
- Kansas Department of Agriculture Stakeholders Meeting for Simply Kansas Marketing Program

Capacity Building

- A team of seven Kansans attended and are planning activities for 2013 to meet a North Central Region Sustainable Agriculture Research and Education (NCR-SARE) Initiative entitled "Carbon-Energy-Climate" as agriculture responds to climate variability.
- More than 40 professionals from wildlife, natural resource, and range management agencies, along with Extension professionals increased their knowledge of grassland management with fire and grazing at a Patch Burn Grazing Conference.

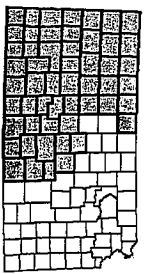
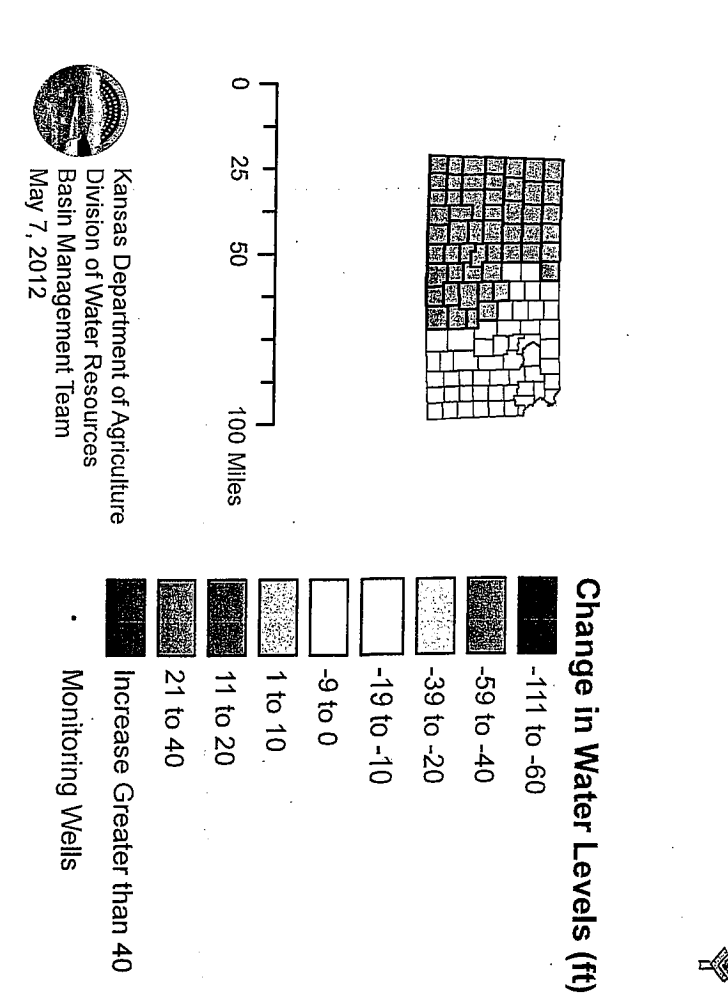
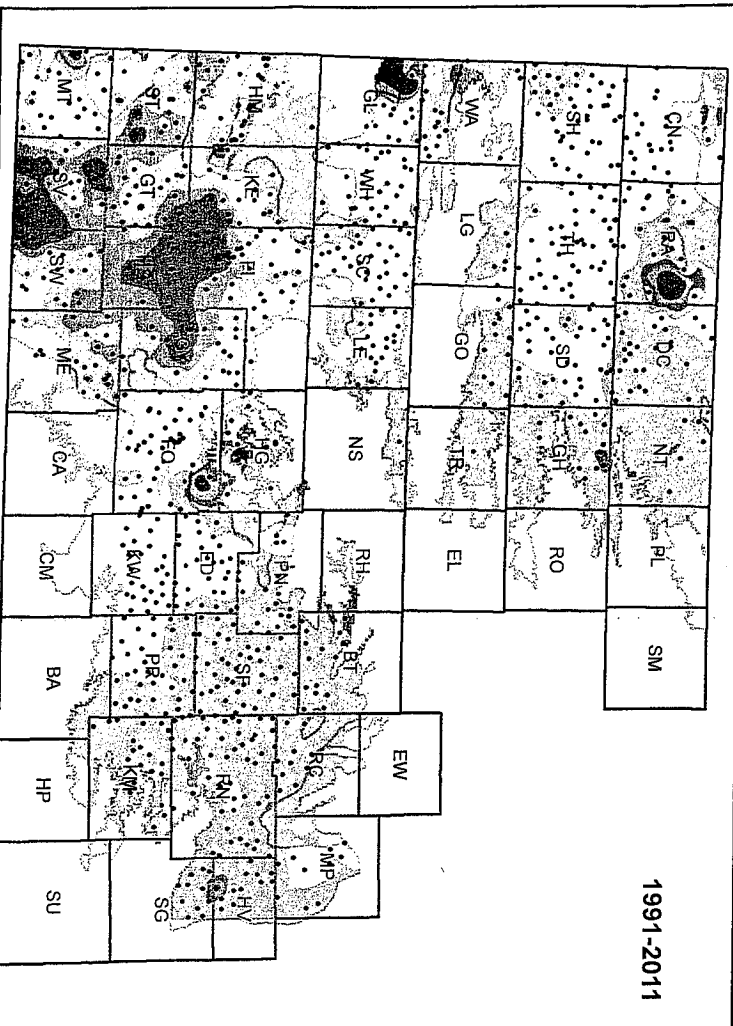
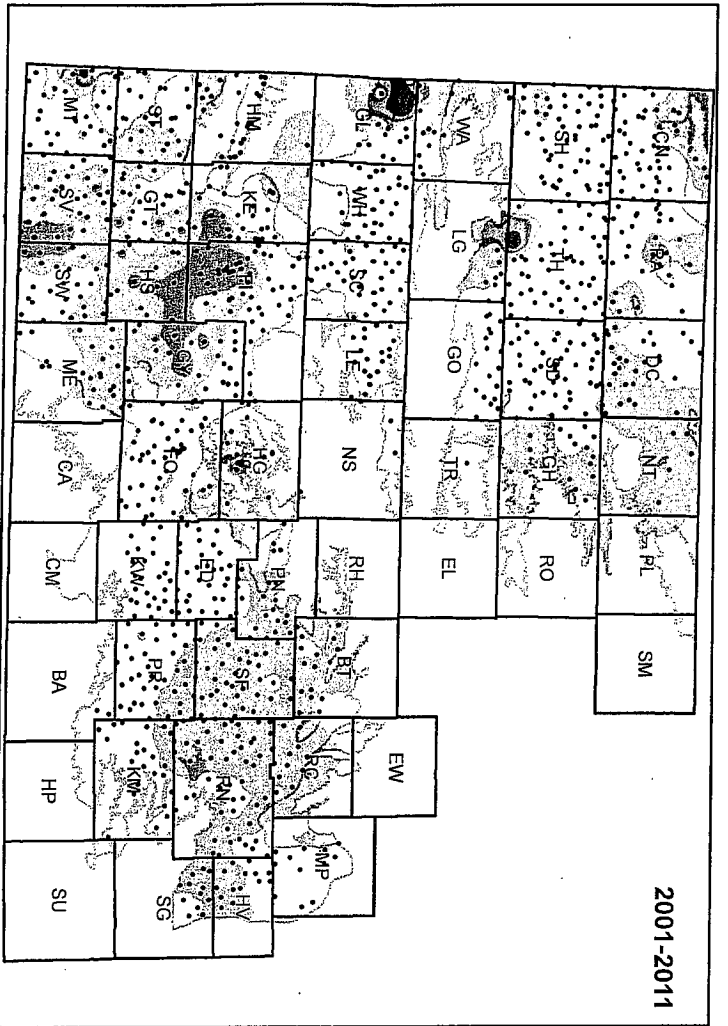
KCSAAC Plans for 2013

Projects and activities planned for KCSAAC and the Kansas SARE Professional Development Program include providing assistance for:

- Drought Management – continue to cooperate with organizations and agencies providing meaningful, timely outreach to Kansas farmers and ranchers.
- Continue Pilot Feasibility Grant Program to encourage research at Kansas State University that benefits small farms and ranches
- Maintain social media presence – through Twitter (@KSSARE) and web site (kansassustainableag.org) – to promote sustainable agriculture-related resources for Kansans
- Increase involvement with the Growing Growers program, an apprenticeship program for organic fruit and vegetable growers
- Increase involvement in multi-state, multi-agency activities focusing on beginning farmer resources, especially resources for veterans
- Continue to provide resource materials for Kansas family farms and ranches

Interpolated Well Level Changes for the High Plains Aquifer in Kansas

DRAFT



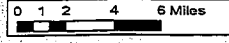
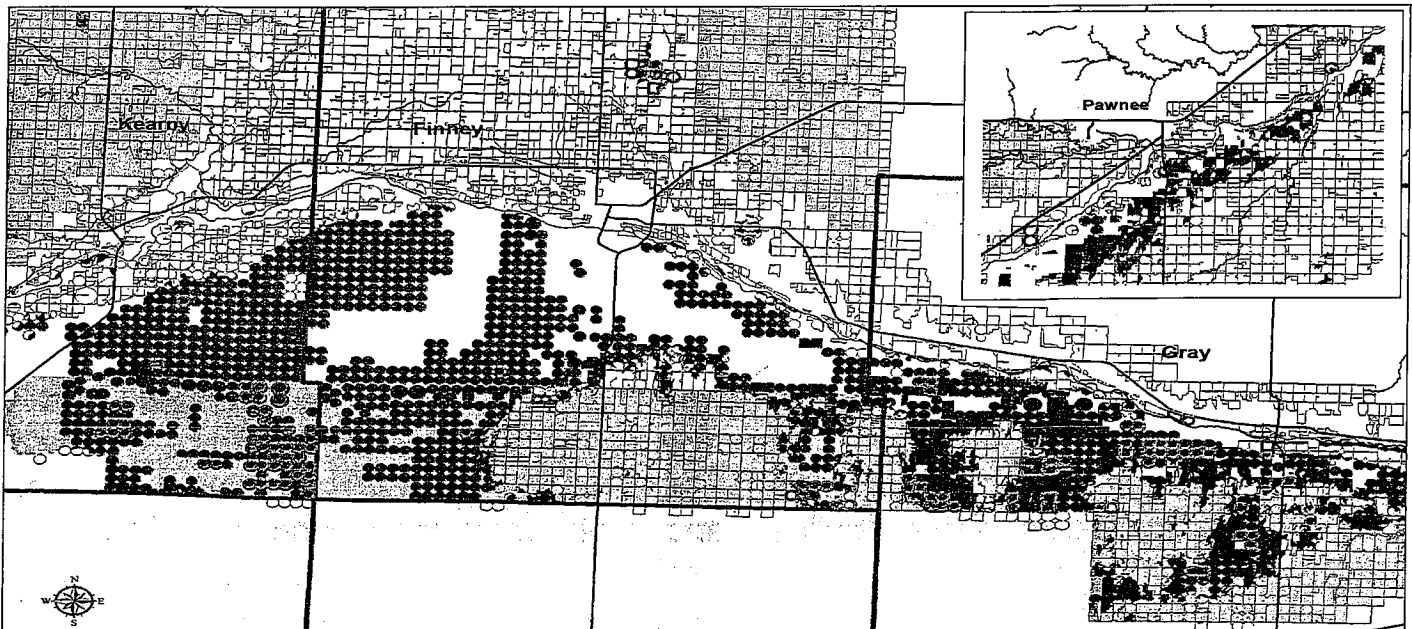
- Change in Water Levels (ft)**
- -111 to -60
 - -59 to -40
 - -39 to -20
 - -19 to -10
 - -9 to 0
 - 1 to 10
 - 11 to 20
 - 21 to 40
 - Increase Greater than 40
 - Monitoring Wells

Kansas Department of Agriculture
 Division of Water Resources
 Basin Management Team
 May 7, 2012

Established CREP Conservation Covers in Southwest Kansas



Upper Arkansas River Conservation Reserve Enhancement Program (CREP) Acres Enrolled in CREP Program as of September 30, 2012



CREP Project Areas

- Tier 1
- Tier 1 Soils Unsuitable for Dryland Agriculture
- Tier 2

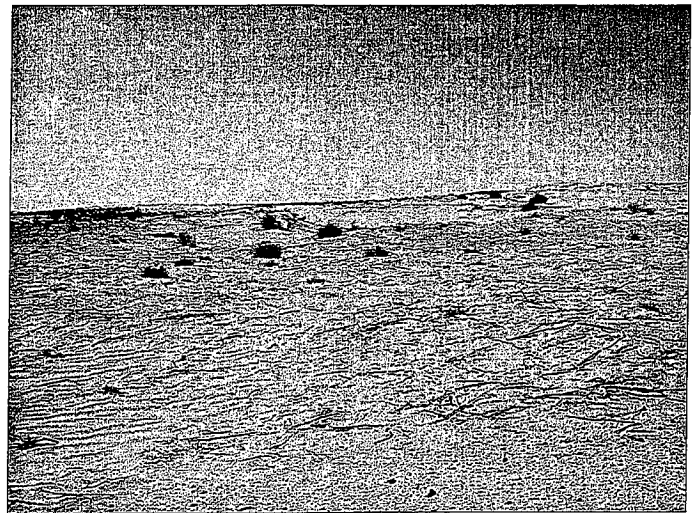
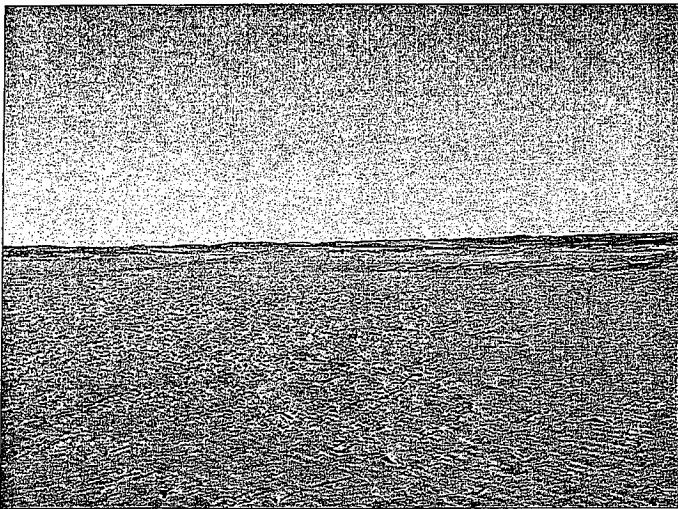
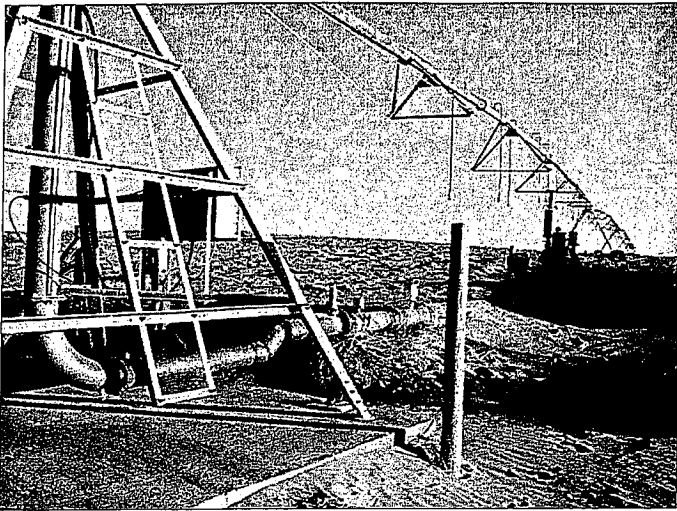
○ CREP Enrollment 2012

□ County

2012

Kansas Department of Agriculture

Soil Erosion Effects in Southwest Kansas



“Tier 1 Unsuitable for Dryland Farming”

The USDA's Natural Resources Conservation Service classifies “Tier 1 Unsuitable” soils as being highly erodible and essentially non-farmable without supplemental irrigation. When the Ogallala Aquifer depletes to the level of no longer being able to sustain high volume irrigation, these sandhills and similar areas along the Arkansas River corridor will no longer be farmable, and ranching is one of the few primary agricultural activities which will be suited to this region.

One outstanding merit of the CREP program to date has been establishing cover on highly erodible lands in the project area. The extremely sandy and fragile, windblown soils of the sandhills will be very difficult to re-vegetate when irrigation is no longer possible due to groundwater declines and crop production runs out. The CREP program has given producers a viable option for starting grass stands while limited irrigation water is still available and provided a financial opportunity and incentive to do so. CREP also provides a 15 year economic cushion to the neighboring retailers and communities. There have been some real success stories on providing CRP covers.