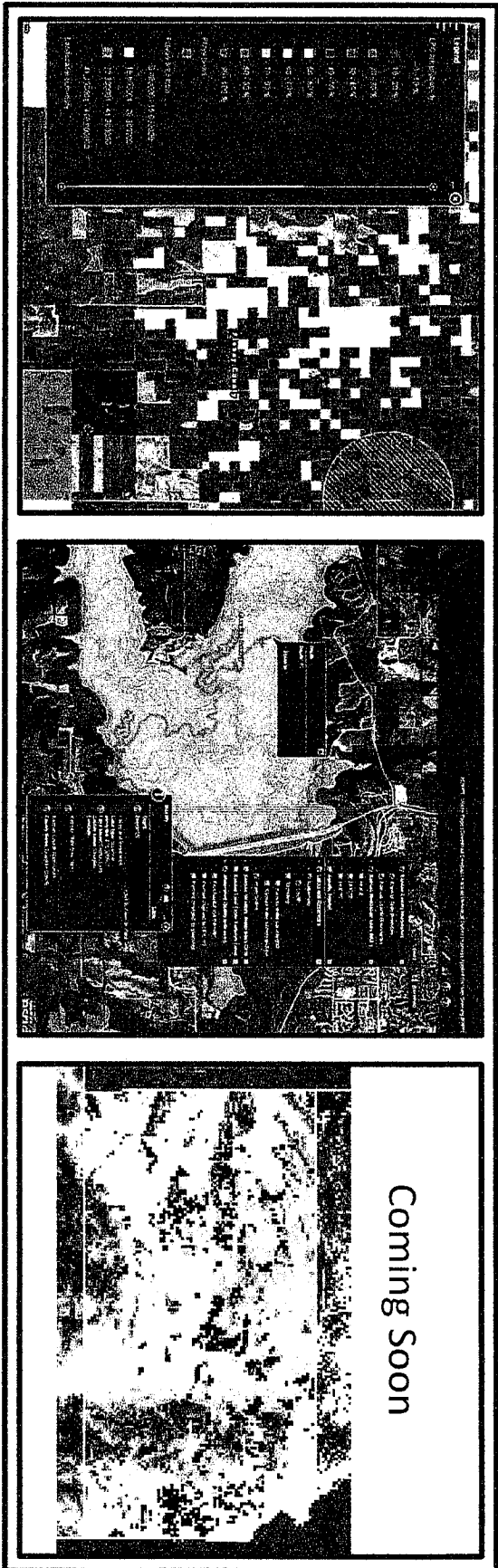


# Making Kansas Natural Resource Data Available Through Online Mapping Services



## **NRRP**

Natural Resource Planner

## **KARP**

Kansas Aquatic  
Resource Planner

## **WGA CHAT**

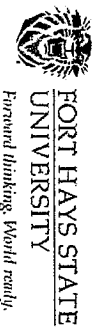
Crucial Habitat  
Assessment Tool

# Natural Resource Planner created by:

16-2



With significant input and contributions from:



The NRP is the result of a consortium of experts debating and identifying the best available data and/or professional opinion to assist with site planning.

# Data layers in the Natural Resource Planner

<p>Base data</p> <ul style="list-style-type: none"> <li>State boundary</li> <li>County boundaries</li> <li>PLSS 1-mile grid</li> <li>Major highways</li> <li>Aerial imagery/Streets/Topo...</li> </ul>	<p>Natural resources</p> <ul style="list-style-type: none"> <li>Land cover map (2005)</li> <li>Water bodies</li> <li>Managed areas</li> <li>Sensitive species</li> <li>Prairie chicken range</li> <li>Prairie chicken habitat</li> <li>Whooping crane corridor</li> <li>Playa lakes</li> <li>Landscape metrics (by section)               <ul style="list-style-type: none"> <li>% native, warm season grasses</li> <li>% cropland</li> <li>sum of playa area</li> <li>total number of playas</li> </ul> </li> </ul>
<p>Industry specific</p> <ul style="list-style-type: none"> <li>Proposed and current wind farms</li> <li>Existing turbine locations</li> <li>Transmission lines</li> <li>Power plants</li> <li>Mean wind speed</li> <li>Oil/gas wells (# per section)</li> </ul>	

# Kansas Natural Resource Planner

**Legend**

- Natural Resource Planner
  - Tallgrass heathland
- Sensitive species
  - Protected areas
  - Managed lands
  - Private chicken range
- Boundary
- Public likelihood
  - 10 - 20 %
  - 20 - 30 %
  - 30 - 40 %
  - 40 - 50 %
  - 50 - 60 %
  - 60 - 70 %
  - 70 - 80 %
  - 80 - 90 %
  - 90 - 99 %
  - 99 - 100 %
- Whooping crane corridors
  - 7.5 % of sightings
  - 80 % of sightings
  - 85 % of sightings
  - 90 % of sightings
  - 95 % of sightings



**Layers**

- Kansas County Boundaries
- Kansas State Boundary
- Kansas County Boundaries
- Natural Resource Planner
  - Tallgrass heathland
  - Sensitive species
    - Kansas FALC8
    - Kansas FALC10
    - Kansas FALC12
    - Kansas Watersheds
    - Wind farms
    - Kansas power plants
    - Electric transmission lines
    - Tornado wind speed
    - Sensitive species
    - Protected areas
    - Private chicken range
    - UIC likelihood
    - Whooping crane corridors
      - 7.5 % of sightings
      - 80 % of sightings
      - 85 % of sightings
      - 90 % of sightings
      - 95 % of sightings
    - Private areas tab
    - Percent Native grasslands
    - Percent CTR grasslands
    - Oil and gas wells
    - 2005 Kansas Land Cover Pattern
    - Landscape summary

# Kansas Natural Resource Planner



Natural Resource Planner

KOWP1 - Home Page | User Guide | Metadata | Additional resources | View in ArcMap | Download | Contact | Web Services Contents | Kansas Biological Survey | Kansas Applied Remote Sensing (KARS)



**Legend**

Natural Resource Planner

Wind farms

- Active
- Proposed

Kansas power plants

- Fossil Steam
- Combustion Turbine
- Internal Combustion
- Combinations
- Nuclear Steam
- Electric transmission lines

Oil and gas wells


- 0
- 1
- 2-4
- 5-16
- 17-48
- 49-200

**Layers**


- Kansas County Boundaries
- Kansas State Boundary
- Kansas County Boundaries
- Natural Resource Planner
- Tangier Reservoir
- Kansas HUC8
- Kansas HUC10
- Kansas HUC12
- Kansas Watersheds
- Wind farms
- Kansas power plants
- Electric transmission lines
- Inherent wind speed
- Sensitive species
- Protected areas
- Prairie chicken range
- UIC/LA probability
- Whopping crane corridors
- Prings area fact
- Percent native grasslands
- Percent CRP grasslands
- Oil and gas wells
- 2005 Kansas Land Cover Pattern
- Landscape summary



# Using the NRP to examine potential impacts



**KANSAS BIOLOGICAL SURVEY**  
The University of Kansas



**KANSAS**  
The Natural Resource Planner

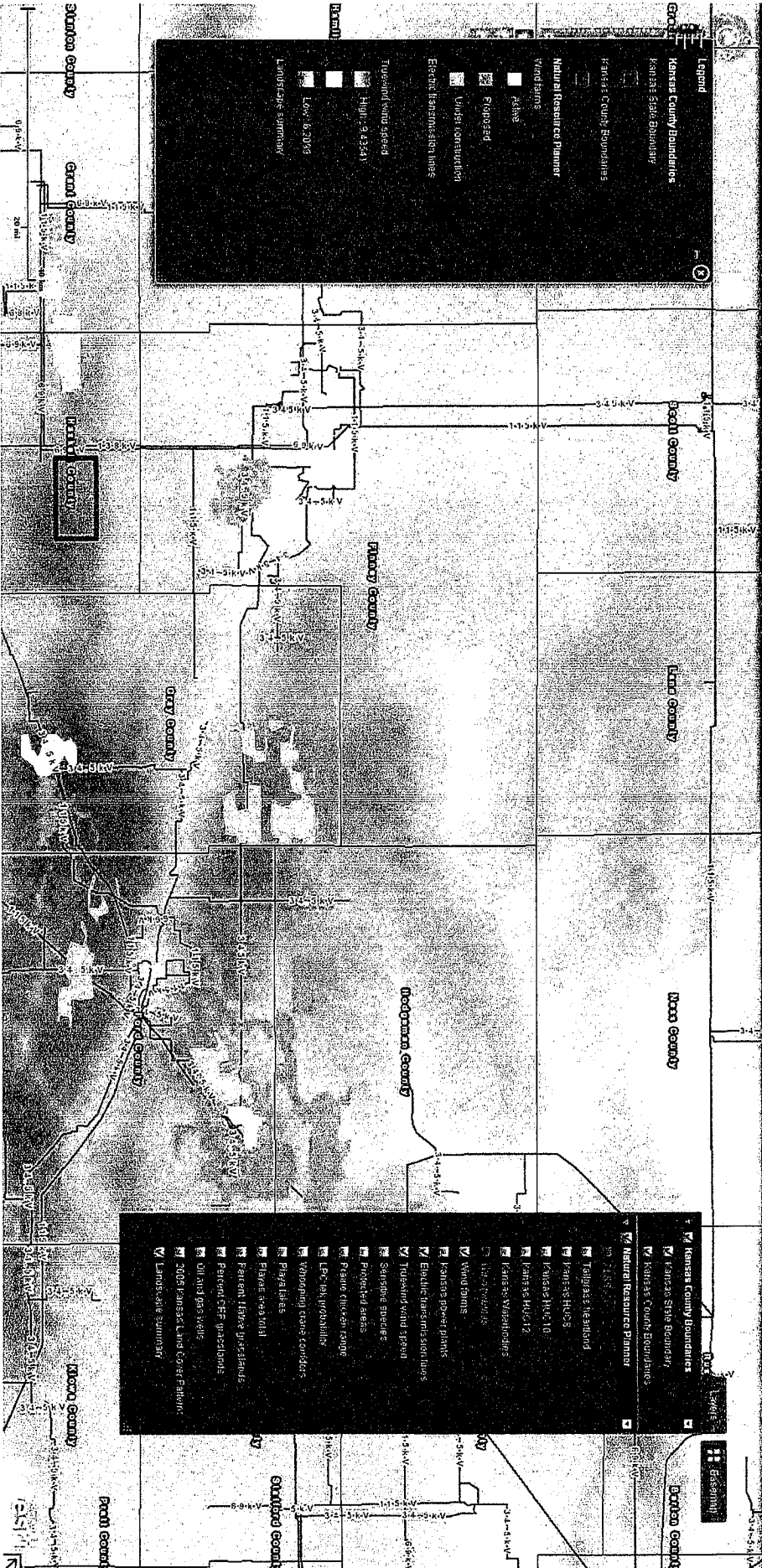
REPORT: Home Page | User Guide | Metadata | Individual resources | View in 2D | Spatial Download | Reports | Data | Search | Contents | Kansas | Desktop | Student | Kansas | Applied | Graduate | Search | WFS |

**Legend**


- Kansas County Boundaries
- Kansas State Boundary
- Kansas County Foundations
- Natural Resources Planner
- Wind Farms
- Fields
- Flood Zone
- Windst construction
- Electric transmission lines
- Turbulent wind speed
- High: 9.43241
- Low: 8.2099
- Land-use summary

**Layers**


- Kansas County Boundaries
- Kansas State Boundary
- Kansas County Foundations
- Natural Resource Planner
- Wind Farms
- Fields
- Flood Zone
- Kansas HUC-10
- Kansas HUC-12
- Kansas Watersheds
- Wind Farms
- Kansas Power Plants
- Electric transmission lines
- Turbulent wind speed
- Scenic Views
- Projected areas
- Power transmission range
- Low risk probability
- Windying state corridors
- Playalakes
- Private state soil
- Private state grasslands
- Private state grasslands
- Oil and gas wells
- 2008 census tracts and core features
- Land-use summary



# Using the NRP to examine potential impacts



**KANSAS BIOLOGICAL SURVEY**  
The University of Kansas  
Natural Resource Planner



**KANSAS**  
The University of Kansas  
Natural Resource Planner

Legend

- Kansas County Boundaries
- Kansas State Boundary
- Kansas State Planning Region
- Natural Resource Planner
- Wetland
- Active
- Proposed
- Under construction
- Elmer's Janitor's sign area
- Topography data source
- Low, 6,2003
- High, 9,43211
- Land's Edge boundary

**PLSS Landscape Summary**

LEGAL	GRID	Acres	% Warm	% CWP	% Cool	% CWP	# Ings	Prairie Acres	Sensitive Species	Prairie Chicken Range	Whopping Crane Corridor	# WCs	LPCHid probability %
32W 27S 31	63802	620.5	0.1104460	0.134650	0	0.7521050	1	67.72207212	none known	0	outside 95% probability	2	0.18205500651
32W 27S 31	63803	613.1	0.1386354	0	0	0.581474	1	67.72207212	none known	0	outside 95% probability	2	0.32510500314
32W 27S 32	63807	637.4	0.0142988	0.003136	0	0.8825723	0	0	none known	0	outside 95% probability	2	0.038384906506
32W 27S 34	63816	645.2	0	0	0	1	0	0	none known	0	outside 95% probability	2	0.11686500312
32W 27S 35	63813	641.6	0	0	0	1	0	0	none known	0	outside 95% probability	2	0.09587819024850
32W 27S 36	63831	653.4	0	0	0	0.8055023	0	0	none known	0	outside 95% probability	0	0.12255000532
32W 28S E 6	6345	624.5	0.0254468	0	0	0.994543	2	0.816512195	none known	0	outside 95% probability	0	0.0467016003182

View Printables Report

Special area

Map navigation controls: Home, Previous, Next, Refresh, Full Screen, Print, Close

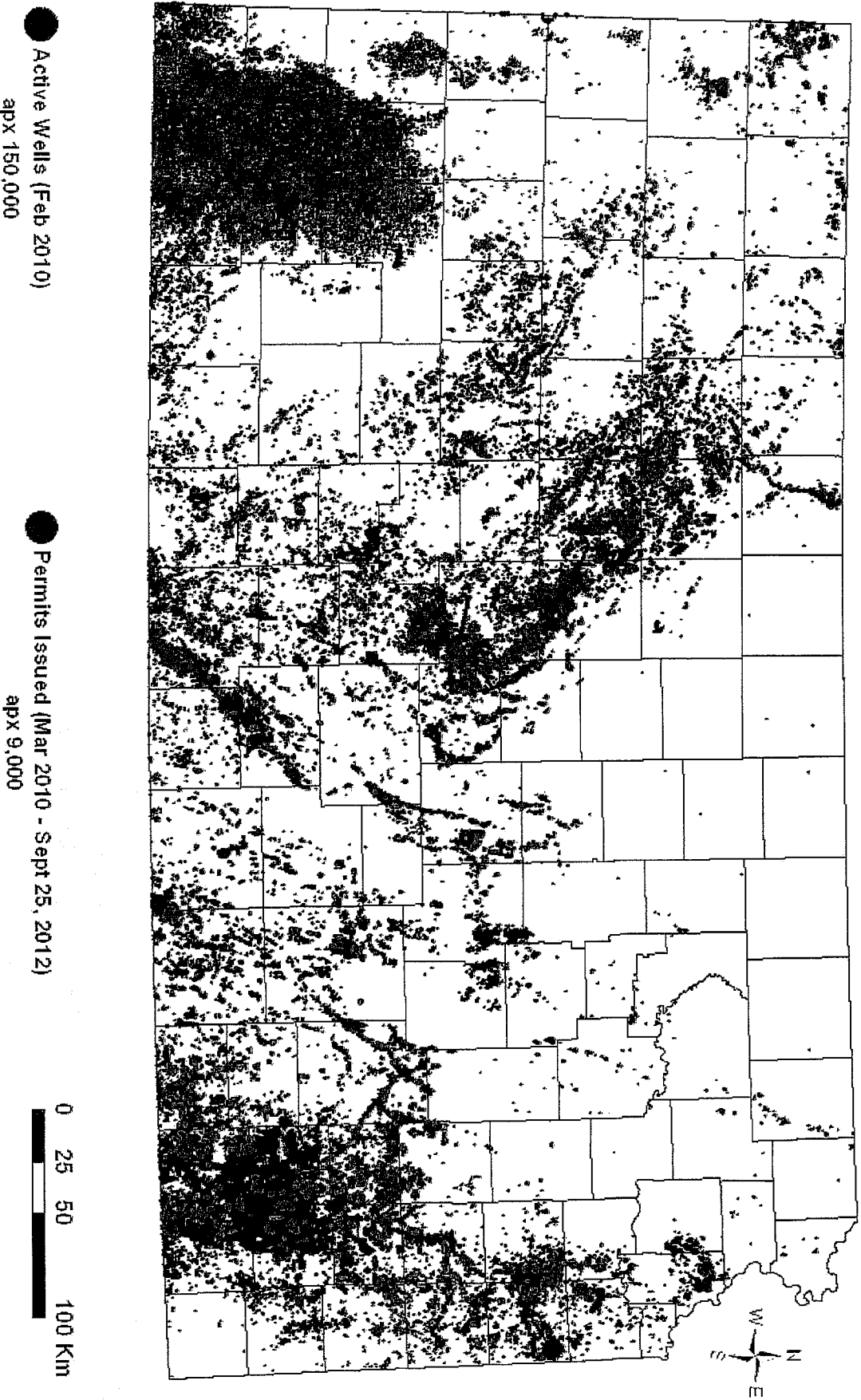
Map navigation controls: Home, Previous, Next, Refresh, Full Screen, Print, Close

Map navigation controls: Home, Previous, Next, Refresh, Full Screen, Print, Close



# NRP currently updating several datasets:

Active oil/gas wells, calculating difference since 2010



## **NRP - Is It Being Used, Is it Useful?**

16-10

Total uses: 10,000 -12,000 since August 2009

Average about 200 uses per month

### **Prior to NRP:**

Project site planning and **approval often took months to years**

Lots of back-forth to the field and GIS data was less accessible

Developers were sometimes **unaware of data and assessment requirements**

### **With NRP:**

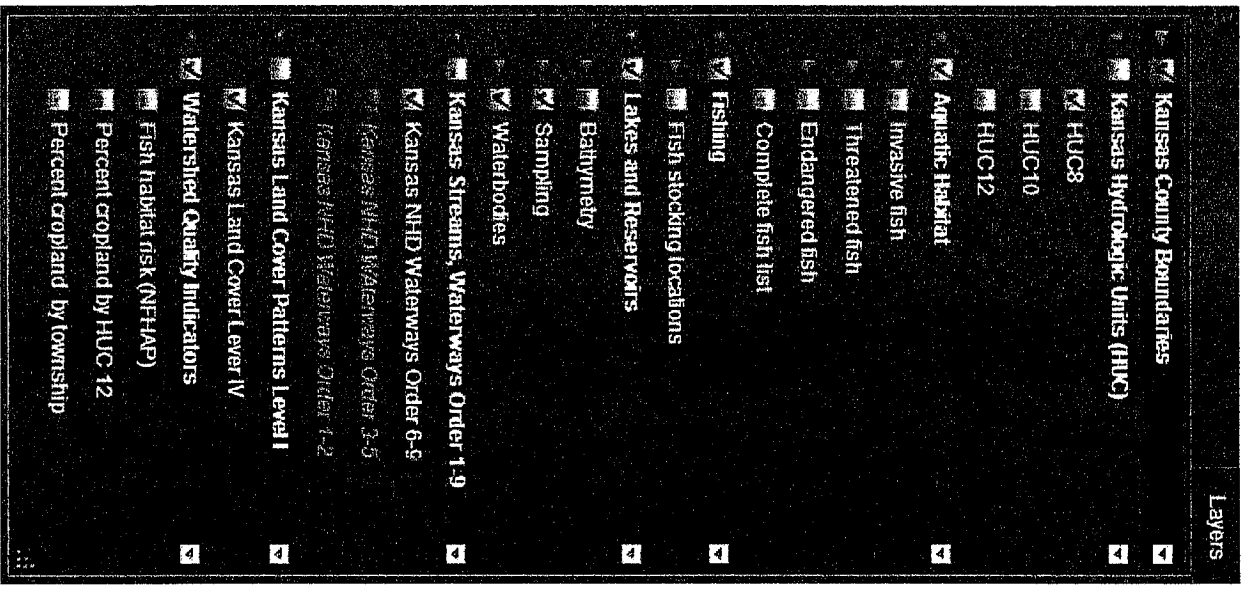
Projects often come to KDWP **already situated to avoid conflict areas**

Speeds up processing significantly (couple weeks...if necessary)

**Open understanding** of landscape variables of concern, and their distribution

# The Kansas Aquatic Resource Planner (KARP)

11-16



Data currently in the KARP include:

Hydrologic Units – HUC 8, 10, 12 units

Aquatic Habitat

Invasive species, modeled habitat

Fishing

Trout stocking locations

Lakes and Reservoirs

Reservoir depths

Sampling grid

Waterways

Streams by Strahler order

Land cover

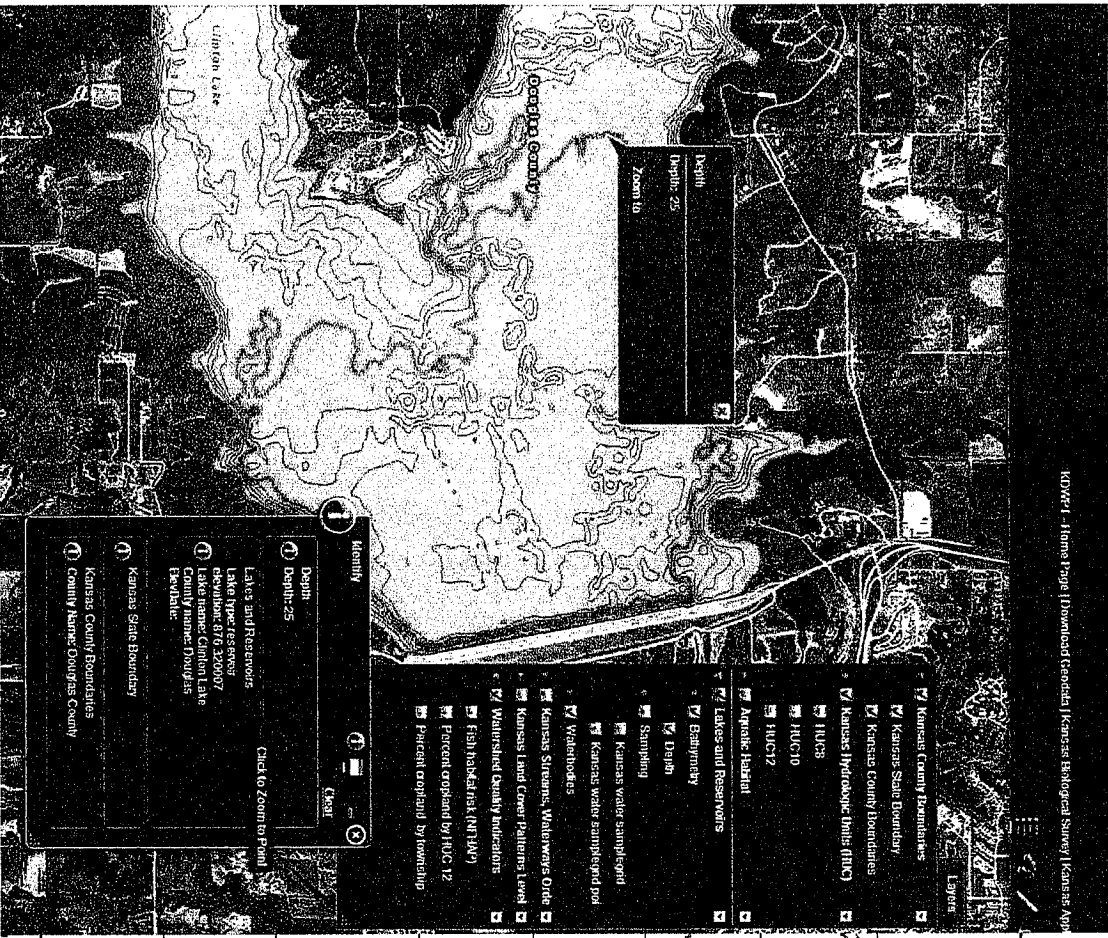
Watershed quality indicators

NHFAP

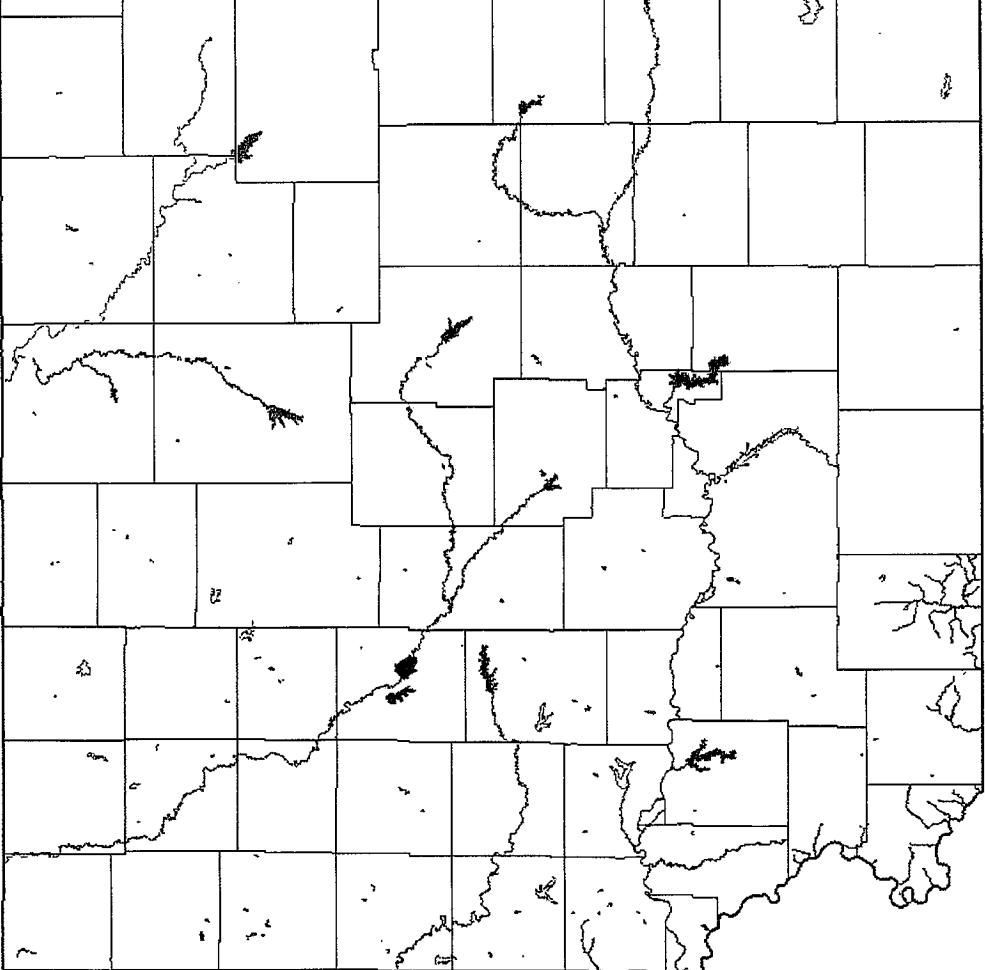
Percent cropland

[kars.ku.edu/aquaticresourceplanner](http://kars.ku.edu/aquaticresourceplanner)

# Reservoir Depths

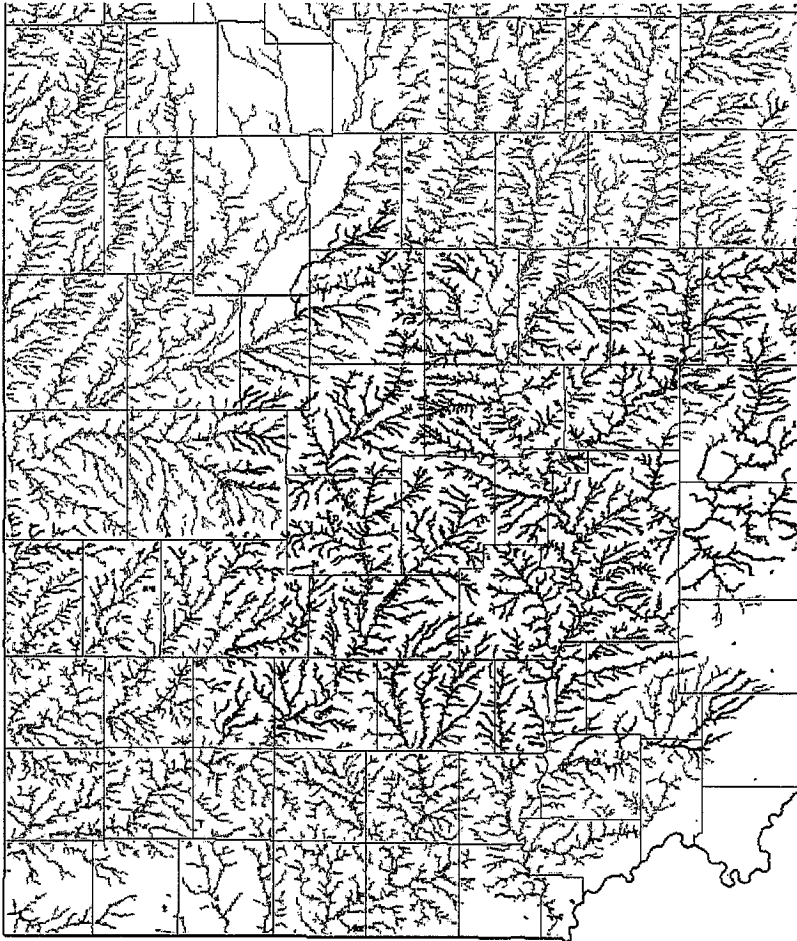


# Invasive Species

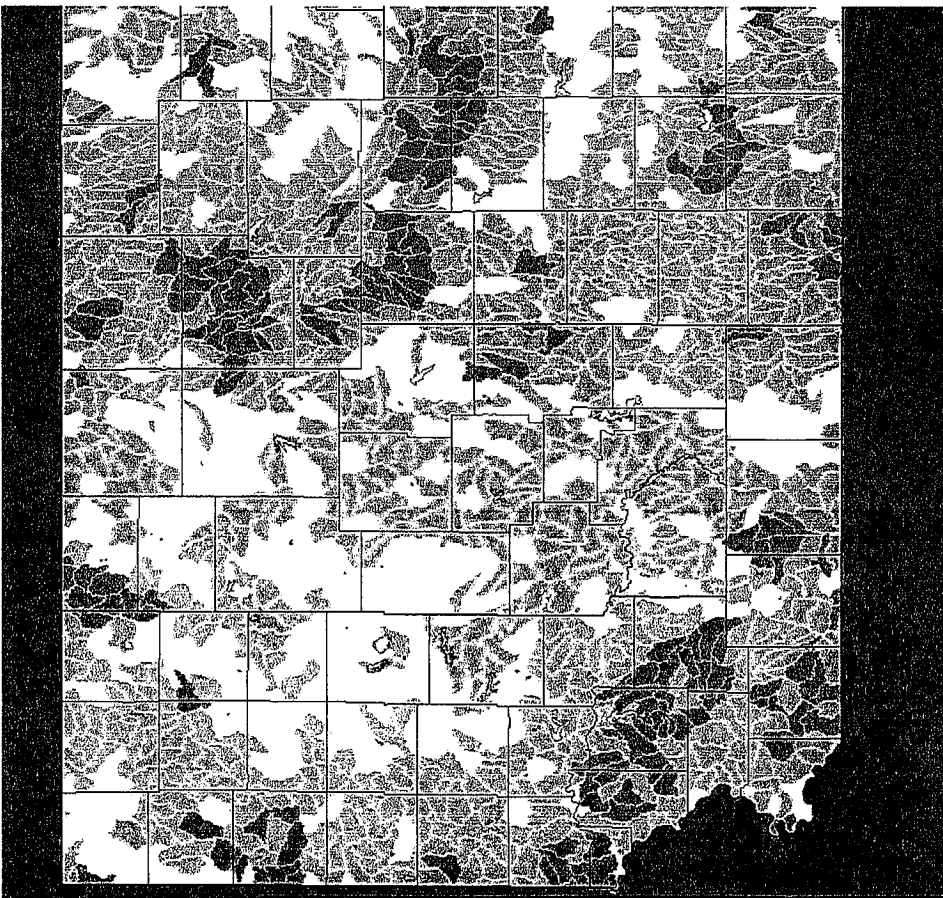


- Zebra mussel
- Asian carp
- White perch

**Fish Habitat Probability  
(Topeka Shiner)**



**Fish Habitat Risk by Watershed  
(National Fish Habitat Action Plan)**



## **Western Governors Association Wildlife Council's initiative to map Crucial Habitats across Western United States**

Wildlife personnel from 17 western states tasked with identifying and prioritizing important wildlife habitats

“Crucial Habitats” across the west created from:

- Species and Habitats of concern
- Unfragmented lands (Large Intact Blocks)
- Terrestrial game and sport fish
- Wildlife Corridors
- Ecological Systems of Concern
- State specific data and priorities

Objective if WGA CHAT is to provide regional/course scale guidance to help with large scale and/or interstate project planning

Alert developers of potential conflicts in a region, and then direct them to more specific state data resources (NRP), and local biologists to conduct site specific analysis.

The CHAT, and even the NRP, are not explicit development "go/no-go" maps. They are early planning tools to help facilitate smart and efficient resource development /management.



Download: Roadside View, Service 2, Contents | Western Governors' Association | Kansas Biological Survey | Historic Applied Fremont, Seward, 4/27/89



- Base Layers
- Crucial Habitat
  - Arizona
  - California
  - Colorado
  - Idaho
  - Kansas
  - Montana
  - Nebraska
  - Nevada
  - New Mexico
  - Oklahoma
  - Oregon - Federal Forest
  - South Carolina
  - Utah
  - Washington
  - Wyoming
- Landscape Integrity
  - Land Use Condition - LULU
  - Scenic



## **NRP, KARP, SGP CHAT**

**Dynamic datasets updated as necessary\*  
to reflect changes in landscape condition  
and changes in wildlife/habitat knowledge.**

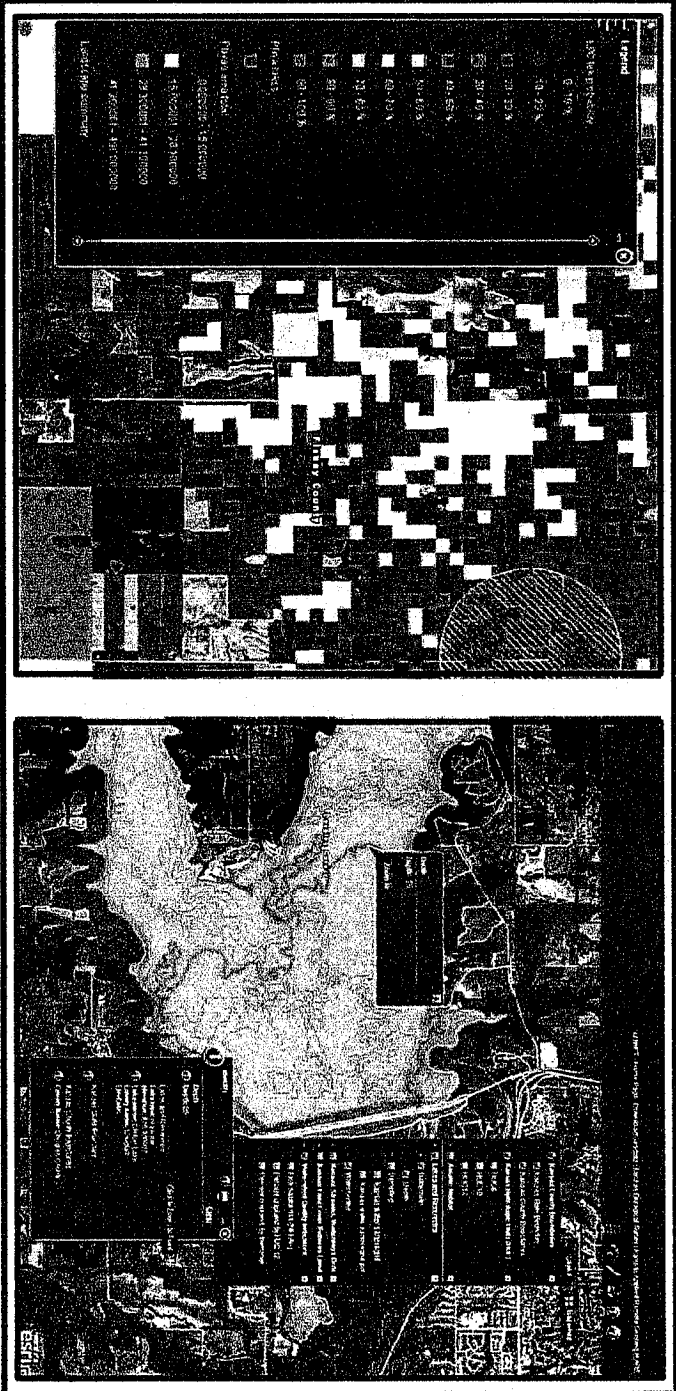
**Frequent enough to be current/useful,  
static enough to provide planning consistency**

# Kansas Natural Resource Planner

[www.kars.ku.edu/naturalresourceplanner](http://www.kars.ku.edu/naturalresourceplanner)

# Kansas Aquatic Resource Planner

[www.kars.ku.edu/aquaticresourceplanner](http://www.kars.ku.edu/aquaticresourceplanner)



Michael Houts, mhouts@ku.edu