

# Capital Improvements Program

*Catherine Patrick*

## Fiscal Year 2014



# FY 2014 Project Selection Process

- **Primary Focus: Preserve Building Assets**
- **Longer-term Focus: Preserve the System**
  - Buildings must work with modern equipment
  - Buildings need good access to the roadways

# Rehabilitation/Repair

9-3

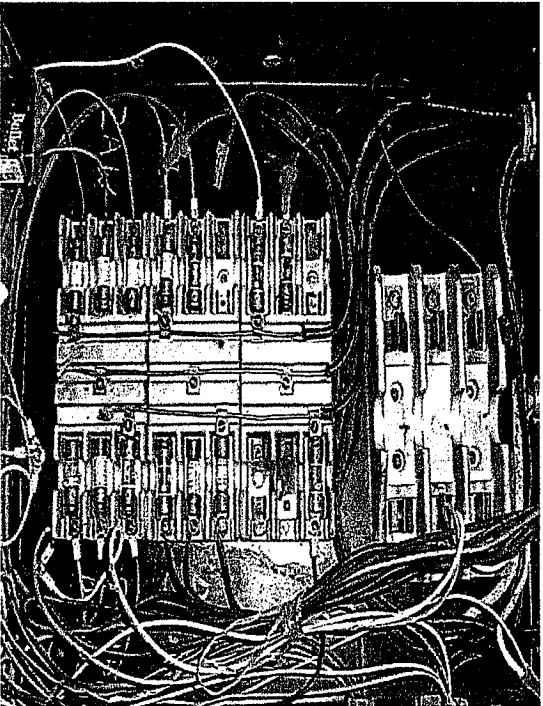
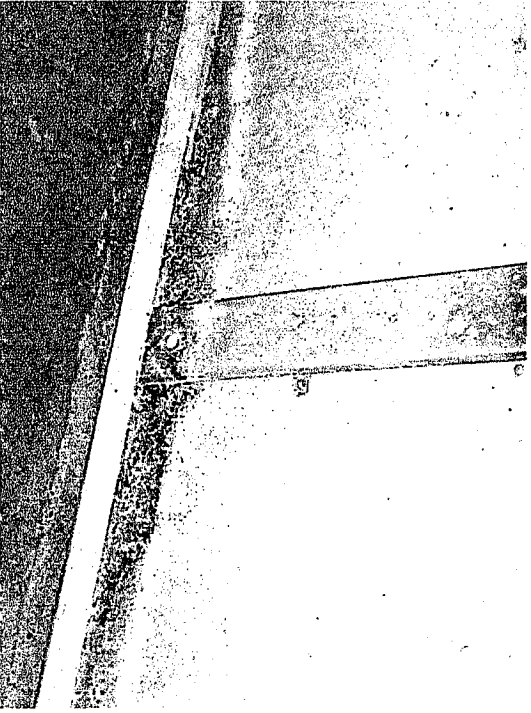
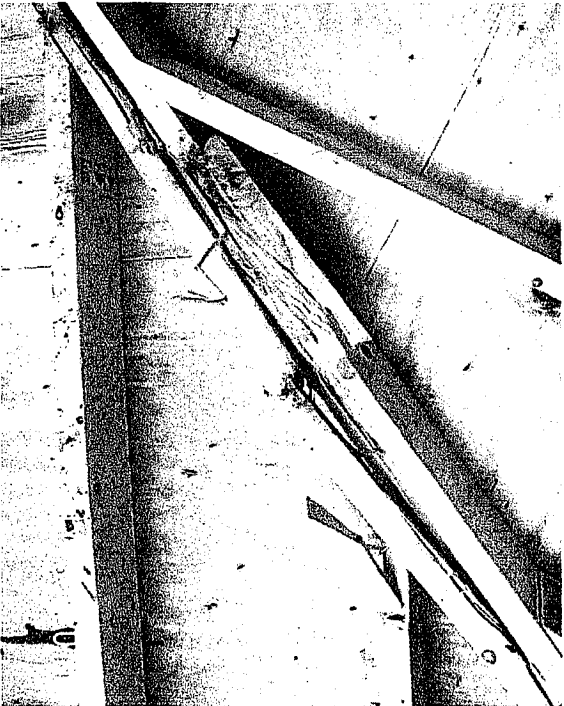
- Total KDOT buildings
  - 955 buildings 2,812,736 sq ft
  
- People buildings – offices/labs
  - 206 buildings 1,306,521 sq ft
    - District, Areas, Subareas, Material Labs, Construction
  
- Support buildings
  - 749 buildings 2,506,215 sq ft
    - Chemical, equipment, materials storage
    - Vehicle wash buildings

# Rehabilitation/Repair

## Typical Rehabilitation/Repair expenditures:

- Door and Window repair/replacement
- Heating, AC repair/replacement
- Interior & Exterior Painting
- Lighting and Electrical repair/replacement
- Plumbing repair/replacement
- Roof repair
- Garage Door repair/replacement
- Salt/Sand building repair
- Fencing repairs/replacement
- Parking Lot repair/resurfacing

# Example Rehab/Repairs



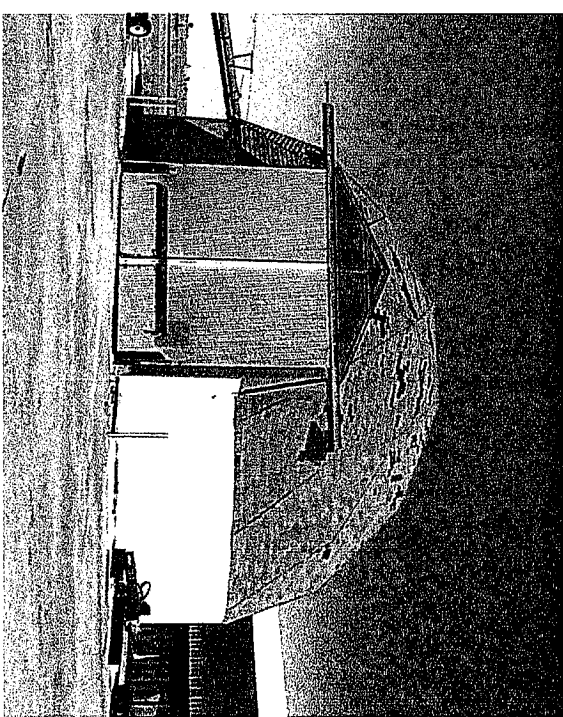
# Reroofs

9-6

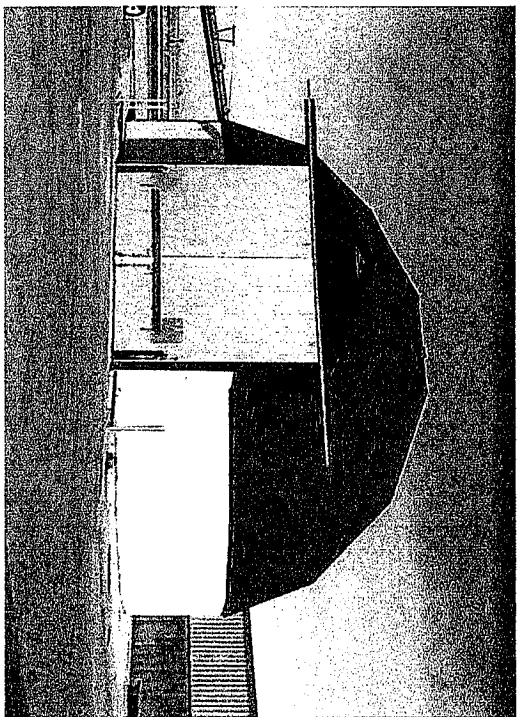
- FY2014 Reroofs:
  - Great Bend Salt Dome
  - Emporia Salt Dome
  - Oskaloosa Salt Dome
  - Speaker Road Salt Dome
  - Oberlin Salt Dome

# Reroofs

- Typical Salt Dome before reroof



- Typical Salt Dome after reroof



# Subarea Bay Modernization

9-8

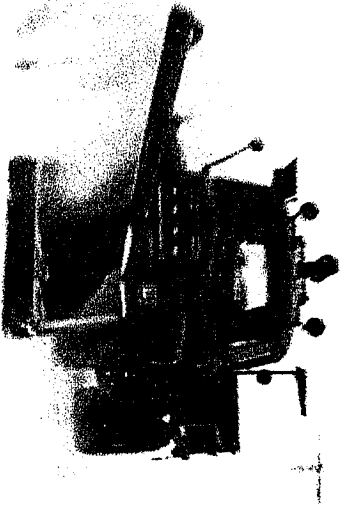
- FY2014 Subarea Projects:
  - Oskaloosa
  - Oakley
  - Columbus
  - Syracuse



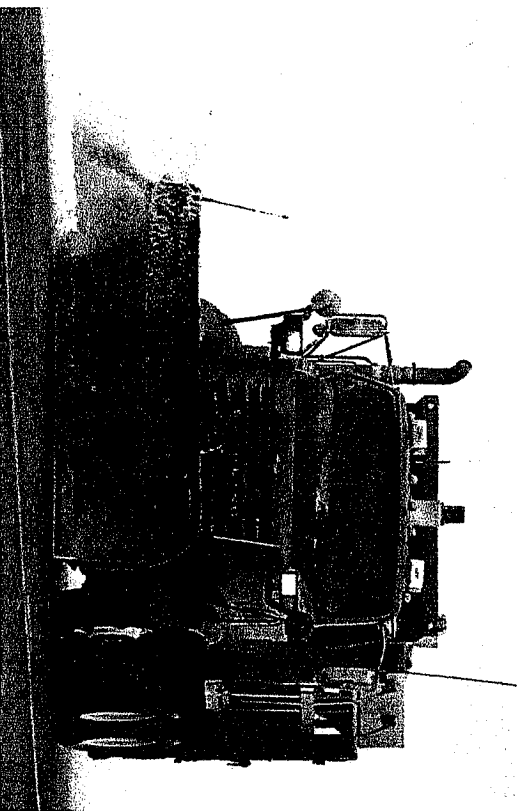
# Subarea Bay Extension/Addition

9-9

1



- 1950's Plow Truck  
23,500 GVW  
8 ft. wide plow  
2 cubic yd. spreader  
approx. 26 ft. long

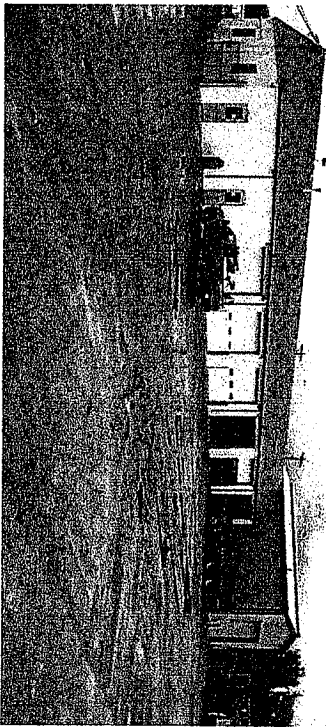


- Modern Plow Truck  
53,000 GVW  
12 ft. wide plow  
9 cubic yd. spreader  
approx. 40 ft. long

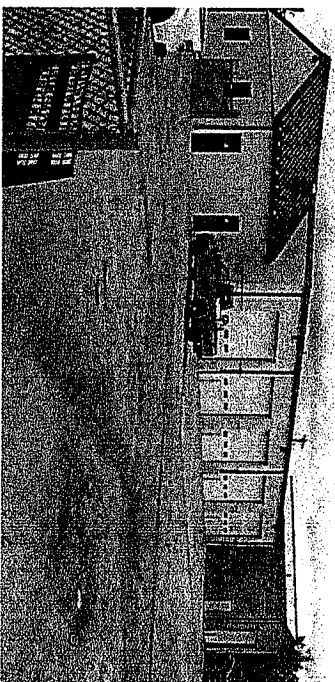
Typical Plow Trucks: 1950's vs. 2012

# Subarea Bay Modernization

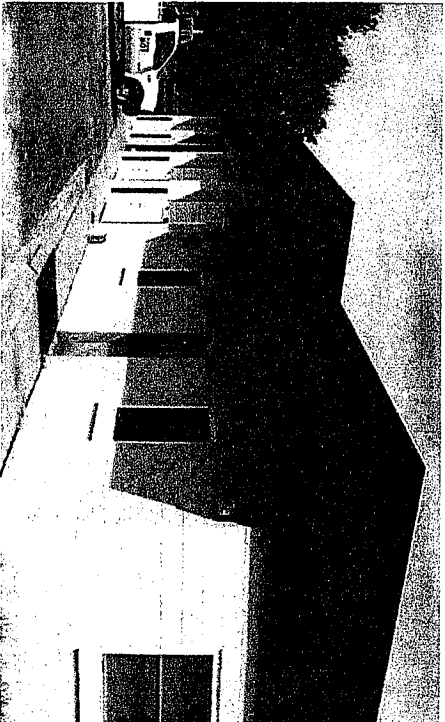
9-10



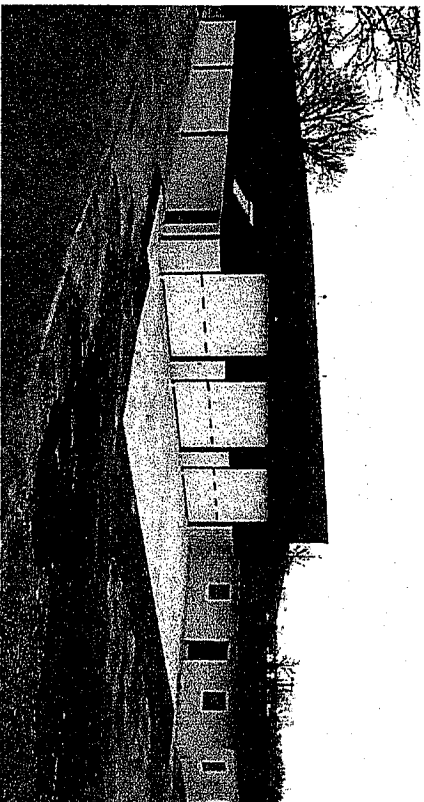
• Style B - Before



Style B -- After



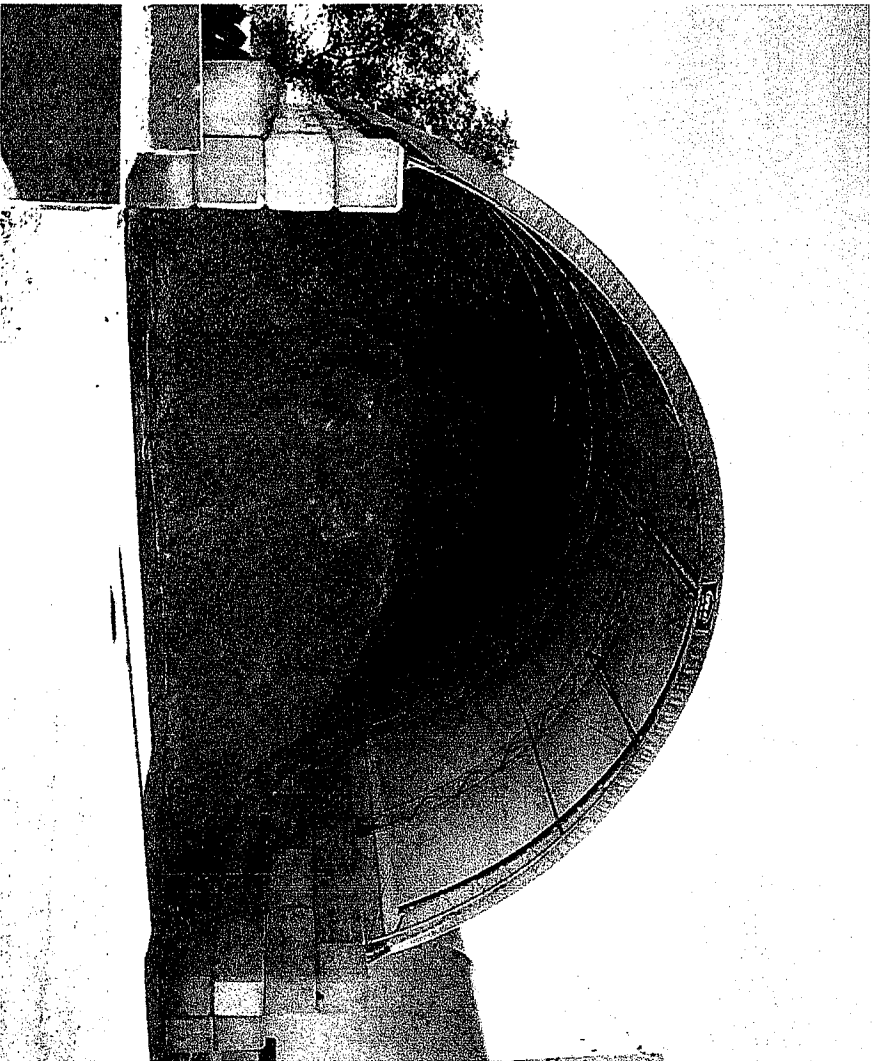
• Style C - Before



Style C - After

# Remote Chemical Storage Bunker

6-11

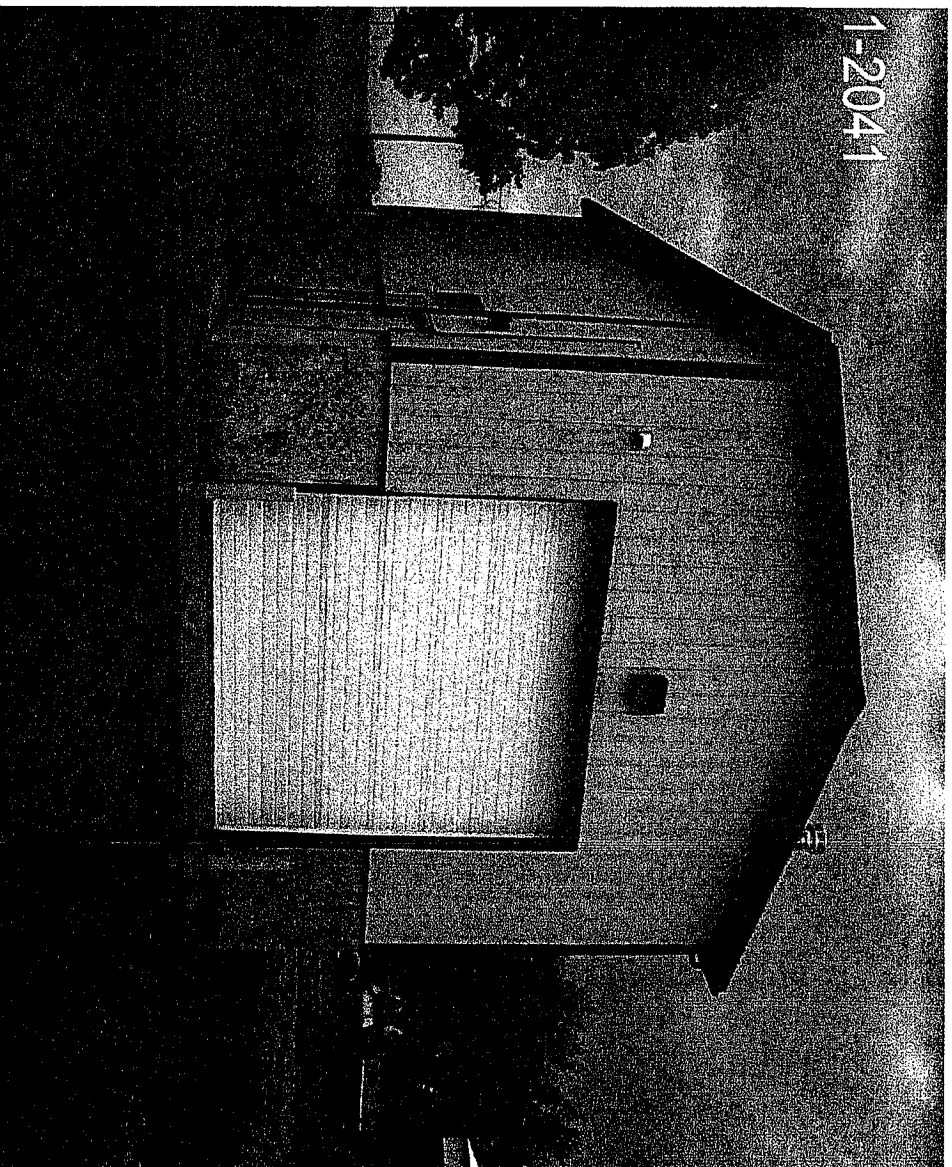


- Increase efficiency –  
Minimize dead-heading
- Increase range –  
Remote location  
increases area each  
truck can cover
- Maximize benefit –  
Multiple routes share  
each bunker
- Minimize costs –  
Bunkers are assembled  
by KDOT

Typical Chemical Storage Bunker

# Vehicle Wash Bay

9-12



Achieves  
Environmental  
Compliance

Allows KDOT  
to Maintain  
Equipment  
Assets

Typical Equipment Wash Bay

# Relocate Subareas

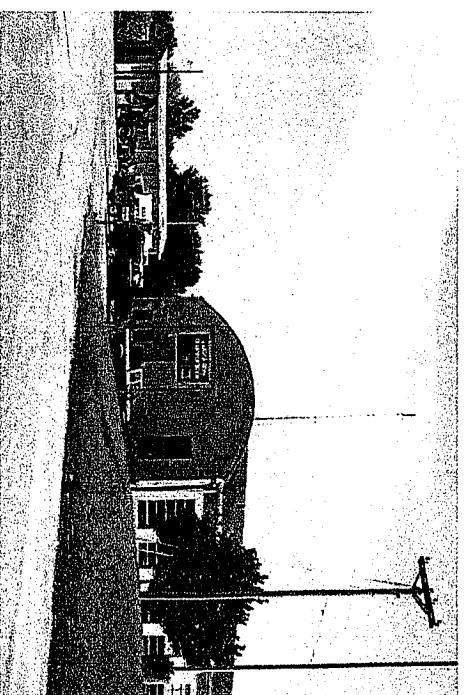
9-13

- FY2014 Subarea Relocations:
  - Concordia
  - Wichita Hillside
  - Newton

# Relocate Subareas

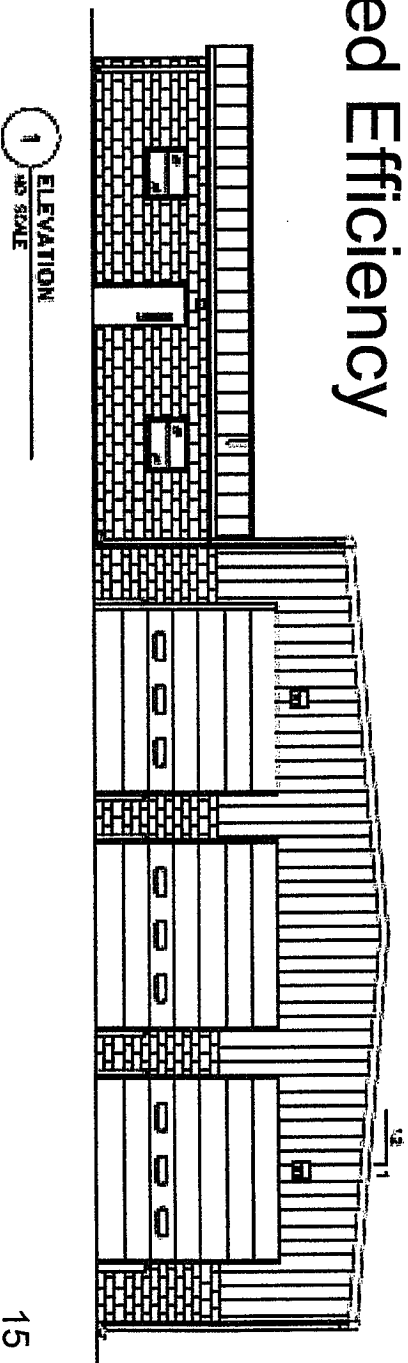
9-14

- **Functionally Obsolete Facilities:**
  - Buildings too small for Equipment
  - Yards too small for Equipment/Storage
  - No expansion space
  - Inadequate access



# Relocate Subareas

- New Subarea Design
  - Comparable to modernized subareas
  - 1/2 the cost of old design
  - More flexible design
  - Durability of old design
  - Improved Efficiency



# Purchase Land

9-16

- Iola – expand existing site
- Garnett – expand existing site
- Kingman – relocate subarea
- Pratt – relocate subarea
- Washington – expand existing site
- Erie – expand existing site
- Sublette – expand existing site
- Kinsley – relocate subarea



DIVISION OF THE BUDGET CAPITAL BUDGET -- FIVE YEAR PLAN AGENCY - KANSAS DEPARTMENT OF TRANSPORTATION

	PROJECT TITLE	ESTIMATED PROJECT COST		AGENCY - KANSAS DEPARTMENT OF TRANSPORTATION					
		KDOT	Current Year	FY 2014	FY 2015	FY 2016	FY 2017	FY 2018	
1	Rehabilitation and Repair		22,013,188	3,978,633	3,428,873	3,527,783	3,626,693	3,692,633	3,758,573
2	Reroof Buildings - Various Locations		3,356,609	419,142	165,675	677,870	535,411	1,146,490	412,021
3	Equipment Storage Sheds		71,450					35,409	36,041
4	Subarea Modernization		16,260,346	3,246,097	2,474,373	2,545,749	2,617,125	2,664,709	2,712,293
5	Chemical Storage Facilities		449,924					222,971	226,953
6	Remote Chemical Storage Bunkers		205,107	33,248	67,574	104,285			
7	Vehicle Wash Bays		1,123,774		781,233				342,541
8	Relocate Subarea - Concordia		1,808,599		1,808,599				
9	Relocate Subarea/Regional Materials Lab - Wichita Hillside		2,056,138		2,056,138				
10	Relocate Subarea - Newton		1,925,652		1,925,652				
11	Purchase Land - Various Locations		310,988	5,988	225,000	50,000	30,000		
12	Relocate Area/Const Office - Concordia		4,919,847		4,919,847				
13	Construct District One Headquarters - Topeka		18,879,853		8,565,925	5,983,527	4,330,401		
14	Relocate Subarea - Pratt		1,879,340			1,879,340			
15	Update Electrical & Bay Extension District Two Shop - Salina		844,512			844,512			
16	Relocate Subarea - Kingman		1,902,920				1,902,920		
17	Relocate Subarea - Kinsley		1,902,920				1,902,920		
18	Update Electrical & Bay Extension District Five Shop - Hutchinson		859,866				859,866		
19	Relocate Subarea - Lawrence		1,905,053					1,905,053	
20	District Six Welding Shop - Garden City		625,496					625,496	
21	District Two Welding Shop - Salina		625,496					625,496	
22	Construct District Three Meeting Facility - Norton		257,487					257,487	
23	Construct Area Training/Meeting Facility - Garnett		257,487					257,487	
24	Construct Area Training/Meeting Facility - Pittsburg		257,487					257,487	
25	Construct Area Training/Meeting Facility - Clay Center		257,487					257,487	
26	Construct Area Training/Meeting Facility - Marion		257,487					257,487	
27	Construct Area Crew Office - Osage City		64,372					64,372	
<b>TOTALS</b>			85,278,885	7,683,108	12,933,117	20,391,459	15,516,608	16,758,319	11,996,274

9-17