

Office of Facilities and Property Management  
900 S.W. Jackson St., Room 600  
Topeka, KS 66612-1220



Phone: (785) 296-8070  
Fax: (785) 296-3456  
mark.mcgivern@da.ks.gov  
<http://da.ks.gov/fm>

Dennis R. Taylor, Secretary  
Mark J. McGivern, Director

Sam Brownback, Governor

JCSBC Testimony  
Atchison Juvenile Correctional Facility  
December 6, 2012

Good morning, my name is Sarah Shipman. I am representing the Department of Administration, Office of Facilities & Property Management to present the proposed sale of the Atchison Juvenile Correctional Facility for the Juvenile Justice Authority.

The Juvenile Justice Authority ceased operations at the Atchison Juvenile Correction Facility in 2009 completely vacated the property as of March 2010. The property, located at 1900 N. 2<sup>nd</sup> in Atchison, includes approximately 108 acres of agricultural land and 52 acres containing 21 buildings. Many of the buildings are in disrepair and have been vandalized. There was an above ground fuel tank, which has recently been removed. The City of Atchison water tower is located on the property and accessed through easements.

The property was deemed surplus in August of 2011. Personnel from both the Juvenile Justice Authority and Department of Administration had conversations with various state agencies, including Wildlife, Parks, & Tourism, Highway Patrol, and K-State to attempt to identify an alternative use for the facility. Additionally, DOA staff contacted Atchison city officials, Benedictine College, and Valley Hope to gauge interest in the property.

Ultimately, the decision was made to attempt to sell the property through a sealed bid process. Required notices were published and the appraisal and survey were obtained. The appraised value of the property was \$700,000. The proceeds, less the cost of the sale, will go 20% to JJA and 80% to KPERS. DofA is reviewing the bids and will present the proposed sale to the State Finance Council for approval on December 12.

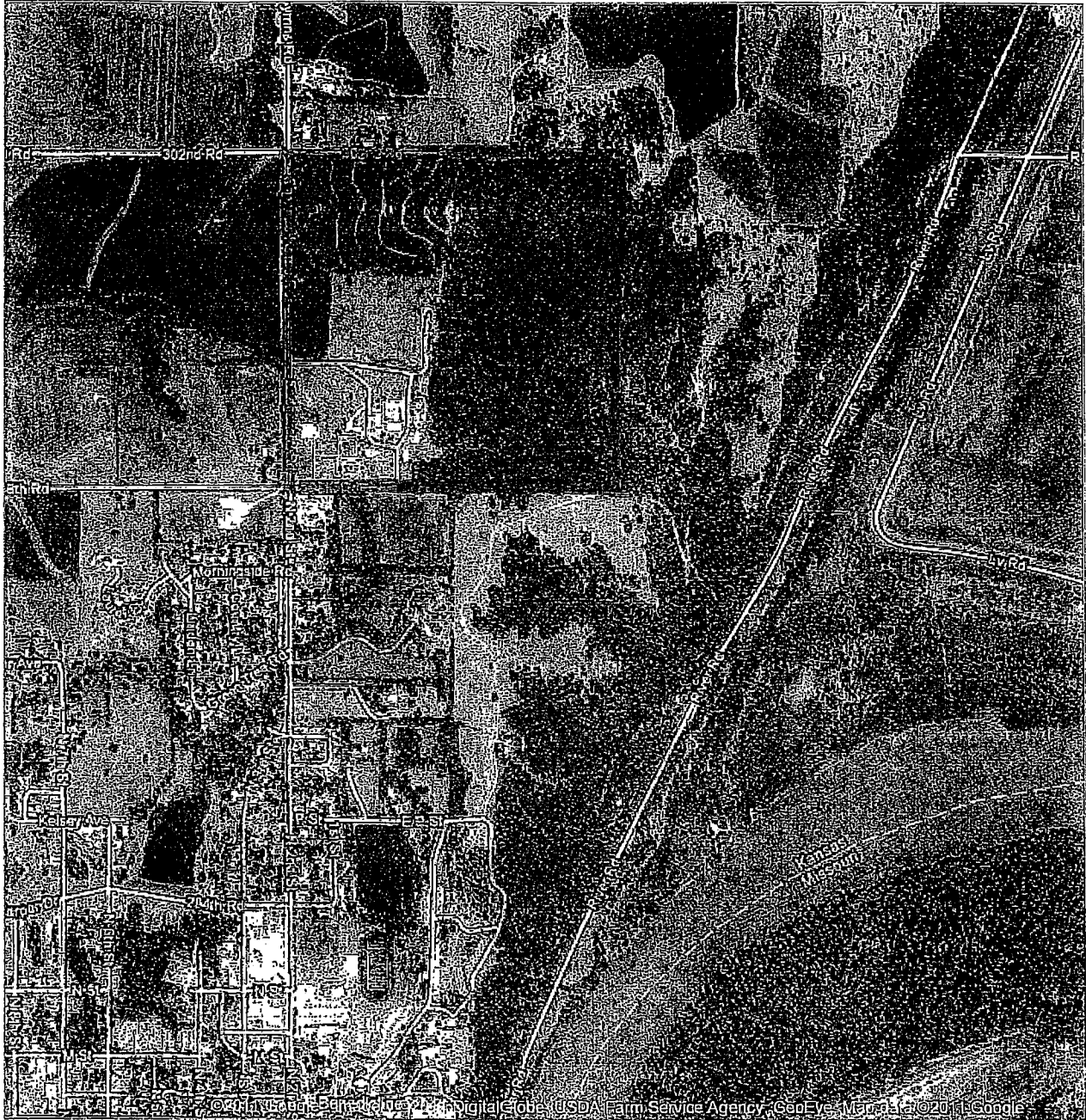
I am available to answer your questions.

Thank You.



Google maps

To see all the details that are visible on the screen, use the "Print" link next to the map.



4-2