



Aging and Long-term Care  
3/15/2012

Adult Protective Service's Update

Presented by:

Jim Kallinger, Deputy Secretary ISD

Kansas Department of Social and Rehabilitation Services

For additional information, contact:

Michelle Schroeder, Director of Legislative and Constituent Services & Public Policy  
Docking State Office Building, 6<sup>th</sup> Floor North  
(785) 296-3271

Good morning. I am Jim Kallinger, Deputy Secretary at SRS for Integrated Service Delivery. We appreciate this opportunity to testify before you.

Today, we would like to give you an update on the progress of our proposed Program Improvement Plan (PIP) for Adult Protective Services (APS). It was just 4 weeks ago that we first presented the plan and timeline, and we are pleased to report that considerable progress has already been made.

We will continue to advance these reform efforts at a quick pace and would appreciate your continued support and advocacy.

In context with the established timeline, we will now present the updated implementation of our plan of action for your consideration:

### **Adult Protective Services Program Improvement Plan Update (3/15/12)**

#### **COMPLETED**

##### **February 14, 2012**

SRS APS internal workgroup met

- Reviewed SWOT analysis, identified immediate priorities and developed plan for next steps
- Established 7 internal workgroups (see attachment A)
- Developed list of local, regional and statewide stakeholders (see attachment B)

##### **February 29, 2012**

APS Advisory Committee met (see attachment C)

- Rough draft of a Vision and Mission Statement for the Office of Adult Protective Services was presented and discussed. Revisions will be presented at next Advisory Committee meeting. Next meeting set for 3/21
- Audit proposal was presented and accepted by Audit Committee on 3/1. Scope statement to be presented to Audit Committee on or before audit launch 6/1

##### **March 1, 2012**

Office of Adult Protective Services was established under the Division of Children and Family Services (see attachment D)

##### **February/March -other**

- In conjunction with NAPSAs, TX APS and OK APS, Kansas APS Standards of Practice and quality reviews are being developed (see 5/15)
- Currently working with NAPSAs to identify measurable APS performance goals
- Currently working with NCPEA to develop prevention plan
- Developing core competency standards
- Training review and research being conducted to begin new training development (see 6/7)
- SWOT analysis of KIPS computer system completed

##### **On or before April 1, 2012**

Staff for new office designated/hired and aligned

- Statewide Program Manager designated
- Assistant Program Manager, position posted for hire
- 4 Regional Assistant Program Administrators, 2 positions hired, 2 positions posted for hire
- Statewide Program Manager reports directly to Divisional Director (see addendum D)

##### **On or before April 5, 2012**

APS audit proposal was presented to the SRS Audit Committee on 3/1 and approved

- Audit scheduled to begin on or before 6/1
- Audit Committee awaiting scope statement from APS Advisory Committee
- Final audit will be presented on or before 9/1

**On or before April 15, 2012**

Statewide meetings of APS stakeholders scheduled (see attachment E)

- *April 24<sup>th</sup> - Topeka (afternoon)*
- *April 25<sup>th</sup> - Pittsburgh (afternoon)*
- *May 2<sup>nd</sup> - Wichita (afternoon)*
- *May 3<sup>rd</sup> - Kansas City (afternoon)*
- *May 8<sup>th</sup> - Dodge City (afternoon)*
- *May 9<sup>th</sup> - Salina (morning)*
- Proposals from APS Advisory Committee and workgroups will be presented at APS stakeholder meetings for input and commentary

**On or before May 1, 2012**

Complete Interagency MOU draft for consideration by SRS, AG, KDHE and Dept. of Aging

- SRS Secretary and Attorney General met to discuss moving MOU forward
- Meetings with APS staff and SRS General Counsel held. Current policies and existing MOU being reviewed.
- Initial meeting with AGs office convened to begin discussions on coordinating services of Abuse, Neglect, and Exploitation (ANE) unit in AGs office and Fraud Unit at SRS
- Meeting of all the relevant legal counsels have been set for March 20. Follow-up meetings, if necessary, will be scheduled.
- Targeted date for signing MOU, July 1

**PENDING****March 21, 2012**

APS Advisory Committee meeting (scheduled)

- Discuss APS public awareness campaign and funding
- Strategic Plan development continued
- Scope statement for audit
- Follow up on items from 2/29 meeting

**On or before May 15, 2012**

Convene internal SRS workgroup

Discuss statewide staffing patterns per APS case read reports  
Identify appropriate Standards of Practice per NAPSA to be adopted

**On or before June 1, 2012**

Incorporate prevention plan into APS Standards of Practice

Prevent abuse and neglect before it ever occurs in the first place

**On or before June 7, 2012**

Convene training seminar for APS social workers and intake workers (scheduled)

Better cooperation, communication and collaboration

**On or before July 1, 2012**

Launch a public awareness campaign on adult abuse, neglect and exploitation

This Program Improvement Plan (PIP) has been implemented with a strong commitment from SRS leadership, and will continue along this same trajectory. We look forward to presenting you another update on the progress of our Adult Protective Service program improvement plan in the near future.

Respectfully Submitted,

Jim Kallinger, Deputy Secretary ISD  
Kansas Department of Social and Rehabilitation Services

## **Attachment A**

### **SRS Internal Workgroups**

#### **Policy and Procedures**

Goal: Review policy before they are posted on CFS Website - 4/30/12

Goal: Assistance in developing the training for policy and procedures - Due 5/20/12

#### **Staffing Needs**

Goal: Research Best Practice Case Load Standard - Complete

Goal: Create list of needs staff have to facilitate the APS Program well and strategies to make it happen - Ongoing

#### **Vision and Mission**

Goal: Draft of sample Vision and Mission Statements to be presented to the APS Policy Committee and Advisory Committee - Due 2/23/12; Finalize 3/21/12

Goal: Aid in Defining APS Population/Who do we serve – Due 2/23/12

#### **Core Competency/Standards of Practice**

Goal: Identify appropriate Standards of Practice & Core Competencies – Draft due 3/8/12

Goal: Identify Performance Goals – Draft due 4/13/12

#### **Communication with Stakeholders**

Goal: Map out quarterly Stakeholder Town Hall meetings throughout the 4 regions (dates, topics for discussion- what do we want the stakeholders to know?) - Due 3/15/2012

Goal: Develop purpose, outcome, and communication needs between Stakeholders and APS – Due 3/30/12

#### **Training**

Goal: Define goals of training - Due 3/15/12

Goal: Develop outline of training - Due 4/15/12

#### **Law Enforcement**

Goal: Develop joint training opportunities and topics with local law enforcement - Ongoing

Goal: Develop statewide or local strategies to collaborate and cooperate with AG and local law enforcement - Ongoing

## **Attachment B**

### **Statewide APS Stakeholders**

#### **WICHITA APS STAKEHOLDERS:**

Community Foundation, Hardtner  
Kiowa Senior Citizens Center  
Barber County Home Health  
Arrowhead West, Inc.  
Sharon Learning Center  
Barber County Sheriff's Office  
Medicine Lodge Police Dept.  
Kiowa District Hospital  
Kiowa Hospital District Manor  
Horizon's Mental Health Ctr, Barber office  
Leisure Time Center  
Kiowa Police Dept.  
Andover Court Assisted Living  
South Central Mental Health  
Carriage House Senior Living  
Lakepoint Augusta  
Medicalodges  
Life Care Center  
Victoria Falls Assisted Living  
Dept. on Aging – CPAAA  
Emeritus of Augusta  
AseraCare Hospice  
Golden Living Center  
Hospice Care of Kansas  
Mercy Home Care  
Safehouse  
Associated Homecare  
Flinthills Services, Inc.  
Harry Hynes Memorial Hospice  
RCIL (Resource Ctr for Independent Living)  
Salvation Army  
SBA Home Health Services  
Susan B. Allen Hospital  
Vintage Place of El Dorado  
Wheat State Manor  
Andover City Police Dept.  
Benton Police Dept.  
Rose Hill Police Dept.  
Total Home Care and Hospice  
Augusta Dept. of Safety  
El Dorado Police Dept.  
Towanda Police Dept.  
Butler County Sheriff's Dept., El Dorado

Butler County Sheriff's Dept., Augusta  
South Central Kansas Area Agency on Aging  
Sterling House Assisted Living  
Dexter Care Center Nursing Home  
Angels Care Home Health  
Presbyterian Manor Nursing Home  
South Central Kansas Regional Medical Ctr  
Twin Rivers Developmental Support  
Cowley County Council on Aging  
Community Developmental Disabilities Organization (CDDO)  
Creative Community Living  
Good Samaritan Society Nursing Home  
Hospice Care of Kansas  
Mosaic/Martin Luther Homes West  
Rest Haven Nursing Home  
Southwind Residential Services  
William Newton Hospital  
Cowley County Mental Health Center  
Cumbernauld Village Nursing Home  
Kansas Veterans Home  
Rescare Homecare  
Safe Homes Outreach Office  
William Newton Home Health Services  
Windsor Place Home Care Division  
Arkansas City Police Dept.  
Cowley County Sheriff  
Udall Police Dept.  
Howard Twilight Manor  
Elk County Sheriff  
Eureka Nursing Center  
Burden Police Dept.  
Dexter Police Dept.  
Winfield Police Dept.  
Greenwood County Hospital  
Home Health of Greenwood County  
Greenwood Sheriff's Dept.  
Anthony Community Care Center  
Country Living  
Attica Long Term Care Facility  
Harper Hospital District #5  
Anthony Medical Center  
Horizons Mental Health  
Harper Hospital Home Health  
Anthony Police Dept.

Harper Police Dept.  
Kingman Dept. of Aging  
AAA Case Manager  
The Wheatland's Health Care Center  
Attica Police Dept.  
Harper County Sheriff's Office  
Kingman Community Hospital Home Health  
Kingman Hospital  
Kingman Law Enforcement Center  
Matthew Ricky, Kingman County Attorney  
Clothing Bank  
Pratt Counseling Center  
Meals on Wheels  
Kingman County Sheriff's Dept.  
Kingman Police Dept. Captain  
Crossings Counseling & Consulting  
Hillside Terrace Apartments  
Lakewood Senior Living  
Pratt Ministerial Alliance  
Pathways Respite Care  
Pratt County Retired & Senior Volunteer Program  
Pratt Rehabilitation Medical Center, Home Health  
Agency  
Parkwood Village  
Pratt Regional Medical Center  
Pratt Rehabilitation & Residence Center  
Red Cross, Cannonball Trail Chapter  
South Wind Hospice  
St. Francis Community Services  
Sawyer Senior Citizens  
Pratt County Sheriff's Dept.  
Senior Citizen Center, Friendship Meals  
Southwest KS Area Agency on Aging  
Staff Development Association of Central KS  
Pratt Police Dept.  
Preston Police Dept.  
Caldwell Communicare Home Health  
Sumner County Hospital District #1  
Spring View Manor Nursing Home  
Maria Court Assisted Living  
Riverview Manor Nursing Home  
Phoenix House Nursing Home  
Villa Maria Nursing Home  
Futures Unlimited  
Safe Homes Outreach Office  
Sterling House Assisted Living  
Sumner Regional Medical Center  
Golden Living Center Nursing Home  
Slate Creek Nursing Home

Sumner County Mental Health Center  
Argonia Police Dept.  
Caldwell Police Dept.  
Mulvane Police Dept.  
Bel Aire Senior Center  
Haysville Senior Center  
Kechi Area Senior Center  
La Familia Senior Community Center  
Linwood Senior Center  
The Advocates Group, LLC  
Independent Living Resource Center  
ARC of Sedgwick County  
CPRF  
Envision Inc.  
Heart of Care  
House of Hope  
The Looking Glass  
New Hope  
People First  
Starkey Inc.  
Cheney Golden Age Center  
Belle Plaine Police Dept.  
Conway Springs Police Dept.  
Wellington Police Dept.  
Orchard City Senior Center  
Park City Senior Center  
Downtown Senior Center  
Mount Hope Senior Center  
Northeast Senior Center  
Central Plains Area Agency on Aging  
Legacy Case Services  
Arrowhead West Inc.  
Dreamcatchers  
Goodwill  
Heartsprings  
Ketch  
Love Comfort and Care  
Paradigm  
Rescare Life Choices  
Catholic Care Center Inc.  
Clearwater Nursing and Rehab Center  
College Hill Nursing and Rehab Ctr  
Derby Health and Rehab LLC  
Homestead Health Center, Inc.  
Larksfield Place  
Manorcare Health Services  
Mt Hope Nursing Center  
Westview of Derby  
Wichita Presbyterian Manor

Mental Health Association  
Kansas Guardianship Program  
Comcare  
Deseret Nursing and Rehab Center  
Family Health and Rehab Center  
Haysville Health Care Center  
Kansas Masonic Home  
Lakewood Senior Living  
Lifecare Center of Wichita  
Meridian Nursing and Rehab Center  
Sandpiper Bay Healthcare Center  
Wichita Nursing Center

**EAST APS STAKEHOLDERS:**

CDDO of SE Kansas  
Applewood Rehabilitation Center  
Cedarvale Human Resources  
Chetopa Country Care Home  
Community Care Connections  
Community Health Center of Kansas  
Community Living Opportunities  
Crawford County Mental Health  
Four County Mental Health  
Haven Support Services  
Journey Bound  
Labette Center for mental Health  
Life Choices  
McDonald Residential Services  
Mosaic  
Mercy Mt Carmel Medical Center  
New Beginnings Enterprises,  
New Hope Residential services  
Out 'n About Support Services  
Parsons State Hospital  
Quality Residential living  
Resource Center for Independent living  
Res Care  
Residential Treatment Services of Southeast Kansas  
SKIL  
Smith Residential  
Southeast Kansas Mental Health  
Spring River Mental Health and Wellness  
Successful Dreams  
Tri-Valley Developmental Services  
Wesley House  
Windsor Place  
Southeast Kansas Area Agency on Aging  
East Central Kansas Area Agency on Aging  
Golden Living Center  
Medicalodge  
Sunset Manor, Pittsburg  
Via Christi Village, Pittsburg

Arma Care, Arma  
Emerald Pointe Health and Rehab, Galena  
Galena Nursing and Rehab Center, Galena  
Quaker Hill Manor, Baxter Springs  
Prairie Mission Retirement Village, Saint Paul  
Deseret Health and Rehab, Oswego  
Ft Scott Manor, Ft Scott  
Elm Haven West and East, Parsons  
Chetopa Manor, Chetopa  
Parsons Presbyterian Manor, Parsons  
Chanute Healthcare Center  
Heritage Health Care Center  
Cherryvale Nursing and Rehabilitation  
Pittsburg PD  
Parsons PD  
Independence PD  
Columbus PD  
Chanute PD  
Ft Scott PD  
Iola PD  
Sedan PD  
Local Sheriff Departments  
Pawnee Mental Health Services  
The Guidance Center Inc.  
The Elizabeth Layton Center  
AAA  
Gatekeepers  
Family Service and Guidance Center  
Independent Living Centers of NE KS  
Resource Center for Independent Living  
Three Rivers Independent Living Resource Center  
Topeka Independent Living Resource Center  
Topeka Rescue Mission  
Marian Clinic  
Breakthrough House  
Housing & Credit Counseling  
COF Training Services  
Meals On Wheels  
TARC  
Brown County Developmental Services  
Cottonwood CDDO  
Hetlinger Developmental Services Inc.  
Twin Valley Developmental Services  
Nemaha County Training Center  
Big Lakes Developmental Center, Inc.  
Community Works  
The Home Team of Kansas  
Above and Beyond  
Coffey County Health Department  
Doniphan County Health Department  
Franklin County Health Department  
Jefferson County Health Department  
Jefferson County Home Health & Hospice  
Marshall County Health Department  
NEK Multi County Health Department  
Miami County Health Department

Nemaha County Health Department  
Pittsburg PD  
Parsons PD  
Independence PD  
Columbus PD  
Chanute PD  
Ft Scott PD  
Iola PD  
Sedan PD  
Fredonia PD  
Yates Center PD  
Coffeyville PD  
Local Sherriff Departments

**WEST APS STAKEHOLDERS:**

Good Samaritan Society  
Alterra Sterling House  
Angel S Home Health Care Partners  
Area 6 Southwest Kansas AAA  
Ashland Health Center Home Health Agency  
Ashland Health Center LTCU  
Barber County Home Health Agency  
Beam Senior Center  
Bethel Home  
Carriage House of Greensburg  
Cherry Village  
Civic Connection  
Comanche County Home Health Agency  
Country Place Home Plus of Hoisington  
Country Place Senior Living  
Craig Homecare  
Dodge City Senior Citizen Center  
Eldercare Inc  
Englewood Senior Citizens  
Fowler Nursing Home  
Go Getters  
Golden Belt Home Health & Hospice  
Golden Keys Senior Center  
Good Samaritan Society - Dodge City  
Great Bend Health & Rehab Center  
Great Bend Senior Center  
Grisell Memorial Hospital LTCU  
Hardtner Senior Citizen Center  
Heritage Senior Center  
Heritage Senior Citizen Center  
Hill Top House  
Hilltop Manor

Hodgeman County Community Health  
Hodgeman County Health Center LTCU  
Hospice of the Prairie  
Kansas Soliders Home  
Kenwood Plaza  
Kiowa County Senior Center  
Kiowa Hospital District Manor  
Kiowa Senior Center  
Lakewood Senior Living of Pratt  
Larned Healthcare  
Leisure Time Center  
Leisure Homestead  
Leisure Years Center  
Manor of the Plains  
Meade District Hospital  
Kearny County Home Health Agency  
Kearny County Hospital LTCU  
Lane County Hospital LTCU  
Legacy at Park View, The  
Liberal Good Samaritan Center  
Liberal Home Health & Guymon Hospice  
Liberal Springs  
Logan County Hospital LTCU  
Memorial Living Center  
Moscow Senior Citizen Center  
Oakley Senior Center  
Park Lane Home Health Agency  
Park Lane Nursing Home  
Park View Assisted Living  
Pioneer Home  
Pride of Life  
Rescare Homecare  
Satanta District Hospital LTCU  
Scott County Hospital Home Health Agency  
Senior Center  
Senior Citizen Center  
Senior Citizens Activity Center  
Sensitive Home Care  
Sitter and More  
Southwest Medical Center SNF  
St Catherine Home Care Services  
St Catherine Home Health  
Stanton County Health Care Facility LTC  
Stevens County Hospital HHA  
Sunflower Home Health  
Sunshine Nusing Agency



Sunshine Nursing Horizons  
 Terrace Garden Care Center  
 Wheatridge Park Care Center  
 Wichita County Health Center LTCU  
 Andbe Home  
 Citizens Medical Center LTCU  
 Cottonwood Home Care Agency  
 Dawson Place  
 Decatur County Good Samaritan Center  
 Decatur County Hospital LTCU  
 Deseret Nursing & Rehab at Colby  
 Golden Age Recreation Center  
 Barton County Sheriff's Office  
 Center for Counseling and Consultation  
 HHA  
 City of Hoisington Police Dept  
 Clara Barton Hospital  
 Commission on Aging  
 Country Place Living  
 Country Place Senior Living  
 Duke Lorson Independent Case Mgmt., LLC  
 ElderCare, Inc  
 Ellinwood District Hospital  
 Family Crisis Center  
 Great Bend Police Department  
 Health Department, Barton County  
 Heart of Kansas Family Healthcare Inc.  
 Living Independently in Northwest Kansas (LINK)  
 Pathways-Rescare  
 Regional Prevention Center of Northwest Kansas-Great Bend Office  
 Rosewood Services  
 Sharon's Independent Case Management LLC  
 Southwest Developmental Services Inc  
 SouthWest Kansas Area Agency on Aging  
 St. Joseph Family Medicine  
 Sunflower Diversified Services Inc  
 The Homestead Assisted Living Residence  
 Alzheimer's/Dementia Support Group  
 Bird City Clinic  
 Cheyenne County Hospital  
 Cheyenne Manor - St. Francis Housing Authority  
 Health Department, Cheyenne County  
 The Evangelical Lutheran Good Samaritan Society, St Francis Village  
 Ashland Health Center Clinic  
 Ashland Home Health Department  
 Ashland Health Center - Long Term Care Unit  
 Civic Connection  
 Clark County Sheriff's Office  
 Health Department, Clark County  
 Housing Authority - Minneola  
 Ashland Health Center - Independent Living  
 Apartments - Cedar Crest  
 Iroquois Center/Human Development  
 Minneola District Hospital  
 Minneola District Hospital Long Term Care  
 Centennial Courts Apartments  
 Comanche County Home Health  
 Comanche County Hospital  
 Health Department, Comanche County  
 Prairie Plaza Apartments  
 Protection Valley Manor  
 Cedar Living Center  
 Decatur County Hospital  
 Decatur County Health System  
 Health Department, Decatur County  
 Senior Center, sunflower - Jennings  
 Arrowhead West, Inc  
 Bargain Box  
 Edwards County Sheriff's Department  
 Gran Villa Adult Day Care & Residential Care unit  
 Health Department, Edwards County  
 Housing Authority, Kinsley  
 Key Rehabilitation Inc  
 Kinsley County Garden Apartments  
 Medicalodges Kinsley  
 Midway Clinic  
 AARP, Hays Chapter 5167  
 Adult Victims of Domestic Violence  
 Cedarview Assisted Living Residence  
 Centennial Towers  
 City of Hays Police Chief  
 Counseling Services of Northwest Kansas  
 Developmental Services of Northwest Kansas, Inc  
 Epworth Towers  
 Epworth Village  
 First Care Clinic  
 Fort Hays State University  
 Golden Plains Apartments  
 Good Samaritan Society - Ellis  
 Good Samaritan Society - Hays  
 Hays Medical Center  
 Hays Plaza Apartments  
 Health Department, Ellis County  
 High Plains Mental Health Center  
 Hospice/Palliative Care/Lifeline at Hays Medical Center

Housing Authority -Ellis - Spruce Villa  
Housing Authority, Ellis County  
Housing Authority, Hays  
Living Independently in Northwest Kansas  
Meadowlark Place Assisted Living  
National Alliance for the Mentally Ill (NAMI)  
Northwest Kansas Area Agency on Aging  
Northwest Kansas Association for the Visually Impaired  
Northwest Kansas Domestic and Sexual Violence  
Services inc  
Professional Home Health Services  
Reed Developmental Center  
Senior Companion Program  
Southeast Kansas Independent Living Resource Center  
(SKIL)  
Spruce Villa Housing  
St. John's Inc  
St. John's Assisted Living  
St. John's of Victoria  
Sterling House  
Sundance Apartments  
Sunrise Apartments  
Woodhaven Apartment, L P  
Wyndam Place Senior Residences  
Advocacy Unlimited  
Area Mental Health Center  
Catholic Social Service  
Christian Counseling Associates  
Community Support Services/Area Mental Health  
Center  
Destiny Supports, Inc  
Family Ministries, Inc  
Garden Valley Retirement Village  
Health Department, Finney County  
Homestead Assisted Living  
Housing Authority, Garden City  
Mira Vista Apartments  
MOSAIC of Garden City  
New Hope, Inc  
Providence Professional Services  
Regional Prevention Center of Southwest Kansas-  
Garden City  
Southwest Developmental Services Inc  
SouthWest Kansas Area Agency on Aging  
Southwest Kansas Regional Prevention Center  
Summitt ResCare Kansas  
Sunflower Case Management, Inc  
Sunflower Special Services, Inc.  
Sunshine Horizons Nurse Practitioner Clinic

United Methodist Community Health  
You Are My Sunshine LLC #2  
Area Mental Health Center  
Arrowhead West, Inc  
Brookdale Sterling House  
Bucklin Community Clinic  
City of Bucklin Police Department  
C & S Medical Clinic PA  
Center for Independent Living  
Crisis Center of Dodge City  
Health Department, Ford County  
Hill Top House  
Hospice of the Prairie & Prairie Home Health  
Housing Authority of Dodge City  
Housing Authority of the City of Dodge City/Public  
Housing/Low Income Housing  
Housing Authority of the City of Dodge City/Senior  
Citizens South Hi Rise  
Kansas Soldiers Home  
Long Term Care Ombudsman-Region V  
Medical Heights Medical Center  
Mexican American Ministries  
New Chance, Inc  
Parkview Retirement Apts  
Presbyterian Manor of the Plains  
Senior Center of Spearville  
Senior Center, Inc of Dodge City  
Senior Citizens, North Hi Rise  
South West Kansas Area Agency on Aging  
Spearville Clinic  
Trinity Association of SouthWest Kansas  
Trinity Manor Nursing Home  
United Methodist Community Health  
Via-Christi Home Medical  
Western Plains Medical Complex  
WIC - Ford County Health Department  
Health Department, Gove County  
Dawson Place  
Graham County Hospital  
Graham County Hospital Clinic  
Graham County Sheriff's Department  
Health Department, Graham County  
Hospice Services  
Kobler Developmental Center/DSNWK  
Living Independently in Northwest Kansas  
Northwest Kansas Housing Inc  
Area Mental Health Center  
Bob Wilson Memorial Hospital

City of Ulysses Police Department  
 Family Practice Associates of Ulysses  
 Gerstberger Medical Clinic  
 Health Department, Grant County  
 Heritage Home Care  
 Lewis Psychological Services  
 Park View Assisted Living  
 Senior Center - Grant County  
 The Legacy at Park View  
 Ulysses Family Physicians  
 United Methodist Mexican American Ministries  
 Bethel Home Inc  
 Cimarron One Apartments  
 City of Cimarron Police Department  
 Gray County Sheriff  
 Health Department, Gray County  
 Hill Crest Apartments  
 Montezuma Medical Clinic  
 Rustic Hills Apartments  
 The Shepherd's Center  
 City of Tribune Police Department  
 Greeley County Hospital  
 Greeley County Long Term Care  
 Greeley County Sheriff  
 Health Department, Greeley County  
 Hamilton County Family Practice Clinic  
 Hamilton County Hospital  
 Hamilton County Sheriff/Hamilton County Law Enforcement  
 Health Department, Hamilton County  
 Seasons of Life Living Center  
 Sunflower Square  
 City of Satanta Police Department  
 City of Sublette Police Department  
 Haskell County Sheriff  
 Health Department, Haskell County  
 Ponca Manor Apartments  
 Satanta Aging Program Inc  
 Satanta District Hospital & Long Term Care  
 Satanta Senior Citizen Home Satanta District Hospital & LTCU  
 Sublette Clinic  
 Sublette Plaza Apartments  
 Health Department, Hodgeman County  
 Hodgeman County Sheriff  
 Advocacy Services of Western Kansas, LLC  
 Family Health Center - Deerfield  
 Family Health Center - Lakin  
 High Plains Retirement Village  
 Housing Authority, Lakin  
 Health Department, Kearny County  
 Kearny County Home Health Agency  
 Kearny County Hospital  
 Kearny County Sheriff  
 Westridge Apartments  
 Elmore Heights Apartments  
 Friendship Manor - Lakewood Senior Living Haviland, LLC  
 Greensburg Family Practice  
 Health Department, Kiowa County  
 Housing Authority, Inc, Kiowa County  
 Iroquois Center for Human Development-Mental Health Center  
 Kiowa County Memorial Hospital  
 Kiowa County Sheriff  
 Kiowa Komotara Greensburg Housing Authority  
 Green Meadows  
 Health Department, Lane County  
 Healy Golden Agers  
 Housing Authority, Dighton  
 Lane County Hospital  
 Lane County Long Term Care  
 Lane County Medical Clinic  
 Lane County Sheriff  
 Low Income & Retirement Housing  
 Sunrise Village  
 City of Oakley Police Department  
 Developmental Services of Northwest Kansas  
 Health Department, Logan County  
 Housing Authority, Oakley  
 Logan County Hospital  
 Logan County Manor  
 Logan County Sheriff  
 Northwest Kansas Educational Service Center  
 Westview Center  
 Artesian Valley Health System-Lone Tree Retirement Center  
 City of Meade Police Department  
 Fowler Community Clinic  
 Fowler Nursing Home  
 Fowler Rural Health Clinic  
 Health Department, Meade County  
 Meade County Sheriff  
 Meade District Home Health Agency  
 Meade District Hospital  
 Meade Rural Health Clinic

Parkview Village  
 Plains Rural Health Clinic  
 Wheatland Estates  
 City of Elkhart Police Department  
 City of Rolla Police Department  
 Health Department, Morton County  
 Morton County Law Enforcement Center  
 Rolla Medical Clinic  
 Craig Home Health Care  
 Grisell Memorial Hospital and Clinic  
 Grisell Memorial Hospital LTCU  
 Health Department, Ness County  
 Ness City Medical Clinic  
 Ness county Home Health/Elder Care  
 Ness County Hospital  
 Ness County Hospital Home Health  
 Ness County Sheriff  
 Andbe Home  
 City of Norton Police Department  
 Health Department, Norton County  
 High Plains Mental Health Center  
 Hospice Services (serves 13 nw & Nc counties)  
 Logan Manor Community Health Services  
 Norton County Hospital  
 Norton Manor  
 Norton Medical Clinic  
 Sheriff, Norton County  
 Whispering Pines  
 City of Osborne Police Department  
 Downs Clinic  
 Golden Living Center - Downs  
 Health Department, Osborne County  
 High Plains Mental Health Center  
 Housing Authority, Downs  
 Housing Authority, Natoma  
 Living Independently in Northwest Kansas ([LINK](#))  
 Osborne County Memorial Hospital  
 Osborne County Sheriff  
 Parkview Care Center  
 A Healthy Choice Clinic  
 City of Larned Police Department  
 Country Place Senior Living  
 Health Department, Pawnee County  
 Larned HealthCare Center  
 Pawnee County Sheriff  
 Pawnee Plaza Housing Apartments  
 Pawnee Valley Community Hospital  
 Pawnee Valley Medical Associates  
 City of Logan Police  
 City of Phillipsburg Police Department -Phillips co  
 sheriff  
 Health Department, Phillips County  
 Housing Authority, Logan  
 Housing Authority, Phillipsburg  
 Logan Manor Assisted Living  
 Logan Manor Community Health Services  
 Logan Medical Clinic  
 Phillips County Home Health Agency  
 Phillips County Hospital  
 Phillips County Medical Clinic  
 Phillips County Retirement Center & Prairie Wind Villa  
 Assisted Living  
 Phillips County Sheriff  
 City of Atwood Police  
 City of McDonald Police Department  
 Good Samaritan Center-Atwood  
 Health Department, Rawlins County  
 Rawlins County Clinic/Atwood  
 Rawlins County Health Center  
 Rawlins County Sheriff  
 Wheatridge Manor-City of Atwood Housing Authority  
 Cherry Tree Apartment  
 City of Plainville Police Dept  
 City of Stockton Police Dept  
 Country Lane Apartments  
 Health Department, Rooks County  
 Rooks County Home Health Agency  
 Rooks County Sheriff  
 Solomon Valley Manor  
 Wheatland Apartments  
 City of LaCrosse Police Department  
 Rush County Medical Clinic  
 Rush County Nursing Home  
 Rush County Sheriff  
 Washington Heights Apartments  
 Wegele, Joyce  
 City of Russell Police Department  
 Health Department, Russell County  
 Housing Authority, Luray  
 Main Street Manor  
 Northview Apartments  
 Pioneer Development Center  
 Rural Health Clinic  
 Russell County sheriff  
 Russell Regional Hospital Specialty Clinic  
 Russell Regional Hospital/Physican's Clinic

Senior Center-Waldo  
 Wheatland Nursing Center  
 City of Luray Housing Authority  
 Area Mental Health Center  
 Case Mangement by Kris,L.L. C./SW Dev Serv, inc  
 City of Scott City Police Department  
 Health Department, Scott County  
 Horizon Health  
 Park Lane Nursing Home/Apts  
 Park Place Assisted Living  
 Scott City Clinic  
 Scott County Hospital  
 Scott County Sheriff's Department  
 Bluebird Inn Corporate Apts  
 Care Center & Clinic - UMMAM  
 Carolyn Huddleston,PHD, Licensed Psychologist  
 City of Liberal Police Department  
 Cottages, The  
 Cottonwood Apartments  
 Emeritus Senior Living - Liberal Springs  
 Fritzson Rentals  
 Greenbriar Apartments of Liberal  
 Health Department, WIC, Seward County  
 Home Care, Inc  
 Hospice Services, Inc  
 Housing & Community Development  
 Housing Authority of Liberal  
 Housing Authority of Liberal - Southlawn Manor  
 Housing Authority of Liberal-Parklane Villa  
 Liberal Care Center/United Methodist Mexican  
 American Ministries  
 Liberal Home Health & Hospice  
 Liberal Springs  
 Liberal Springs Assisted Living  
 MOSIAC of Liberal  
 Senior Apartment Living  
 Sensative Home Care LLC  
 Sheriff, Seward County  
 Southwest Guidance Center  
 SouthWest Kansas Area Agency on Aging  
 Southwest Medical Center  
 Southwest Medical Center Home /Medical Equipment  
 Rescare KS. Inc. Liberal (Summitt)  
 Westkan LTD Apartments  
 WindTree Management & Leasing  
 City of Hoxie Police Department  
 Developmental Services of Northwest Kansas  
 Health Department, Sheridan County  
 Hoxie Housing Authority  
 Hoxie Medical Clinic  
 Ridgewood Manor  
 Sheridan County Area Agency on Aging  
 Sheridan County Long Term Care  
 Sheridan County Sheriff's Department  
 City of Goodland Police Department  
 Cole Real Estate  
 D'Lao Apartments  
 Golden West Community Services  
 Good Samaritan Society -Sherman County  
 Goodland Family Health Center  
 Goodland Home Health  
 Goodland Housing Authority  
 Goodland Regional Medical Center  
 Health Department, Sherman County  
 Hospice Services, Inc  
 Indian Creek Apartments  
 Meier Clinics  
 Sondra Krayca, ARNP,LLC  
 Sherman County Probation Office/Court Services  
 Sherman County Sheriff  
 WheatRidge Acres Retirement Community  
 Women,Infants & Children (WIC) - Sherman county  
 Health Dept.  
 Deseret at Kensington  
 Deseret at Smith Center  
 Deseret Health Rehab@smith Center  
 Developmental Services of Northwest Kansas  
 Gardner Wellness & Physical Therapy Center, Smith  
 County Memorial Hospital  
 Gaylord Parkview Manor  
 Health Department, Smith County  
 Heritage Harbor Board & Care Home  
 Housing Authority of Kensington - Country View  
 Village  
 Housing Authority of Lebanon  
 Independent Living  
 Prairie Haven  
 Smith County Family Practice  
 Smith County Memorial Hospital Long Term Care  
 Smith County Sheriff  
 Western Plains Village - Housing Authority  
 City of Smith Center Police Department  
 Cherrylane Apartments  
 City of Macksville Police Department  
 City of St John Police Department  
 City of Stafford Police Department

Farmer Clinic - St. John  
Farmer Clinic - Stafford  
Health Department, Stafford County  
HUD Housing Office  
HUD Housing Office  
Kenwood Plaza  
Leisure Homestead Association  
Leisure Homestead at St. John  
Newell Housing, Stafford Housing Authority  
St John Clinic  
Stafford County Hospital Home Health Services  
Stafford County Sheriff  
Stafford County Hospital  
Stafford County Hospital Medical Clinic  
Health Department, Stanton County  
Housing Authority - Stanton County(Sunset Village)  
Stanton County Family Practice/Stanton County  
Hospital  
Operation Rainbow  
Stanton County Clinic  
Stanton County Family Practice  
Stanton County Hospital/ Long Term Care  
Stanton County Hospital Long Term Care Unit  
Stanton County Sheriff  
Sunset Village(Stanton County Housing Authority)  
City of Hugoton Police Department  
H & R Quality Apartments  
Health Department, Stevens County  
Pioneer Manor/Stevens County Hospital Long Term  
Care  
Stevens County Hospital  
Stevens County Hospital Home Health Agency  
Stevens County Law Enforcement Center  
Stevens County Medical Clinic  
Sunflower Plaza Apartments(Stevens Co Housing  
Authority)  
Westfield Apartments  
Amber Waves Apartments  
Apria Healthcare  
Citizens Medical Center  
City of Brewster Police Department  
City of Colby Police Department  
Colby House LP  
Colby Medical and Surgical Center  
Developmental Services of Northwest Kansas  
Docs on Call, PA  
Family Center for Health Care  
Health Department, Thomas County

Heartland Rural Counseling Service  
High Plains Mental Health Center  
Hospice Services, Inc  
Housing Authority of the City of Colby  
Colby Care Center Nursing Home  
L & C Home Health Agency  
Living Independently in Northwest Kansas  
Meier Clinics  
Prairie Senior Living Complex  
Sunflower Apartments  
Thomas County Sheriff  
Apple Junction Apartments (Housing Authority)  
City of Wakeeney Police Department  
Deines Apartments  
Keeney Village - Housing Authority Wakeeney  
Trego County Home Health  
Trego County Lempke Memorial Hospital  
Trego County Long Term Care  
Trego County Sheriff  
Trego Manor  
Wakeeney Family Care Center  
Adult Day Care  
Health Department, Wallace County  
Housing Authority  
Prairie Village Retirement Center  
Wallace County Family Practice  
Wallace County Health Services  
Wallace County Sheriff  
Weskan Elementary School  
Golden Belt Home Health & Hospice  
Health Department, Wichita County  
Housing Authority - Parkview Apartments  
Wichita County Health Center  
Wichita County Health Center Clinic  
Wichita County Health Center Long Term Care  
Wichita County Sheriff

**KC METRO APS STAKEHOLDERS :**

Cottonwood  
Independence Inc.  
Code Enforcement Douglas County  
Lawrence Humane Society  
Lawrence Community Drop In Center; Sally Bartlett  
Bert Nash Lawrence, KS  
Community Living Opportunity (CLO)  
Brandonwoods Lawrence  
Lawrence Jayhawk Area Agency on Aging, Inc. Topeka,  
Medicalodges of Eudora  
Eudora Police Department  
Linda Hasler, Hiwja Canda, Rain; Lawrence Memorial  
Prarie Ridge Place Apartments  
Lawrence-Douglas County Fire/Medical; Eve Tolefree  
Hillside Village of DeSoto; Lesa Duryea  
Douglas county senior services  
Ransom Memorial Hospital; Julie Janssen  
Babcock Place  
Baldwin Police  
Douglas County Sherriff  
Lawrence Housing Authority  
Wy/LV Area Agency on Aging  
Alliance Home Health  
Adult Health Service  
Bonner Springs PD  
Blessed Trinity Home Health  
Board of Public Utilities  
Bonner Springs Nursing & Rehab  
Best Choice Home Health  
Housing Authority  
Code Enforcement  
Crosslines Retirement Center  
Cody Plaza Apartments (LV)  
Council on Aging (LV-AAA)  
County Club Estates LP  
Life Care Center of Osawatomie  
Louisburg Healthcare Rehabilitation Center  
Medicalodges  
North Point skilled Nursing Center  
Vintage Park LLC  
Christian Care Cottage #2  
Heart to Heart Home Plus  
Ottawa Retirement Plaza  
Ottawa Retirement Village  
Richmond Healthcare & Rehabilitation Center  
Village West  
Wellsville Manor

WY CO CDDO  
Caring Hearts  
Crossline Towers II  
Cushing Memorial Hospital (LV)  
Community Works  
The Dreamworks  
Edwardsville PD  
Eagle Case Management  
Golden Living Nursing Centers  
Godern Living Senior Center (LV)  
Light House of Hope  
Homeless Shelters  
Johnsonville Boarding Home  
Kansas City Hospice  
KCKPD  
University of Kansas Medical Center  
Kindred Long Term Acute Care Hospital  
Leavenworth PD  
Lansing PD  
Life Care Center of KC  
Livable neighborhoods  
Osawatomie State Hospital  
Ransom Memorial Hospital  
Miami County Medical Center  
Mason's Memory LLC  
Miami County Health  
Paola, KS  
COF Training Services, Inc.  
Elizabeth Layton Center(Mental Health)  
Franklin County Mental Health  
Adult Health Services, Inc.  
Alliance Home Health Care, Inc.  
All Services Home Health Care  
Always Best Care Senior Services  
Always There Senior Care of Kansas City  
American Companion Care  
Assisted Services  
Assurance Companion Care  
At Home Health Care  
Avalon Home Health, Inc.  
Axiom/Comfort Keepers  
Barr Private Care  
Benefits of Home -SeniorCare  
Blessed Trinity Home Health Care  
Caregivers Home Health  
Care Minders Home Care  
Carestaff of Kansas City  
The Caring Heart

Caring Hearts Nursing & Personal Home Services  
Carondelet Care Resources  
Carondelet Home Care Services, Inc.  
Cascade Health Services  
Catholic Community Healthcare  
Coalition for Independence  
ComForcare Senior Services  
Comfort Keepers In-Home Care  
Communityworks, Inc.  
Concepts in Care, Inc.  
Continua Home Health Care  
Coram Specialty Infusion Services  
Cottage Senior Care, LLC  
Daughters & Company  
Dream Works, The  
Elder Care Home Health  
Enhanced Home Care  
Essential Home Health, Inc.  
Evercare Home Health  
Firststate Nursing Services  
Gentiva Health Care Services  
Gentle Home Services  
Heartland Home Health Care & Hospice  
Hearts at Home LLC  
Heaven Sent Home Care, LLC  
Helpers, Inc  
Helping Hands Health Care  
Home Health and Hospice Services of Olathe Medical Center  
Home Helpers  
Home Helpers KC West  
Home Instead Senior Care  
Home Team of Kansas, LLC  
Homewatch Caregivers  
Independence, Inc.  
Integrity Home Care  
Interim HealthCare  
John Knox Village Home Health  
John Knox Village Lifestyle Services  
Kansas City Home Care, Inc.  
Kansas City Regional Home Care Association  
Kansas Senior Care Act Johnson County Area Agency on Aging  
KC's Home Health Care  
Lakeview Village Home Health

Life Care Home Health Services, LLC  
Lincare, Inc.  
Locamp Home Health Care  
Mason's Memory, LLC  
Maxim Healthcare Services, Inc.  
Midwest Health Care Services  
Premier Custom Care  
ResCare Home Care  
Resource Center for Independent Living  
Right At Home In-Home Care & Assistance  
Sacred Heart Home Health Care  
Saint Luke's Home Care & Hospice  
Seeds of Hope Home Health Care Agency  
Senior Assistance in Life (S.A.I.L.)  
Senior Assisted Living and Transportation  
Senior Helpers Caring In-Home Companions  
Senior Helpers, LLC  
SeniorLink  
Seniors Helping Seniors  
Shawnee Mission Home Health Care  
Spectrum Home Health Agency  
Spectrum Home Services of Johnson County  
Spectrum Private Care Services, Inc.  
Sunshine Home Health Care  
Synergy Home Care  
Topeka Independent Living Resource Center  
Trinity In-Home Care  
Visiting Angels Living Assistance Services  
Visiting Nurse Association (VNA)  
Walgreen's Infusion Services  
Windsor Place At-Home Care  
Garden of Success  
Choices for Life, LLC  
Pathmakers  
Just in Time Adult Care  
MOSAIC – Kansas City  
Progressive Enterprises, Inc.  
National Alliance  
ResCare Kansas City, Inc.  
Rose Palms Support Services, LLC  
Martha's Care  
Jenian, Inc  
CLJ Foundation  
Advocacy First  
Light House of Hope  
Eagle Case Management  
Limited License CSP's  
Licensed CSP's



ACJC Day-Residential Care, LLC  
Adriel Skilled Residential & Day Services  
Advocacy First  
Alternative Solutions, Inc.  
Bethesda Lutheran Homes and Services, Inc.  
Bethesda Faith Village  
A Better Way, LLC  
Caring Hands Adults & Youth Services, Inc.  
Community Connection, LLC  
Community Living Opportunities, Inc.  
Dreams Work, Inc.  
Dreamweaver Residential & Day Services  
Elite Residential Care  
F.A.M.I.L.I., LLC  
A Family Tree Enterprises, LLC  
A Fresh Start  
The Green Express Studio, LLC  
HappySun Care Services, LLC  
Haven House, LLC  
Heartland, Inc., dba L'Arche Heartland  
Heartstrings Community Foundation  
Horizon Homes and Services, Inc.  
Jenian, Inc.  
Johnson County Developmental Supports  
Kansas Focus – Family Options & Comm. Supports  
Kindred Services, LLC  
Lakemary Center, Inc. – Johnson County  
Life Centers of Kansas  
Light House of Hope  
Loving Care Services, LLC  
MOSAIC – Kansas City  
New Alliance Services, Inc.  
Options Services, Inc.  
People First Network of Kansas  
Progressions  
Progressive Enterprises, Inc.  
Reflection of Peace Home Care & Asst.

Living  
ResCare Kansas City, Inc.  
Residential Solutions  
Serene Care  
Sweet Life, LLC  
CDDC  
TCJ Enterprise  
VIP Day Services  
Autism Enhancement  
Experiences Unlimited  
Graves, Inc.  
Great Expectations  
Home Base, LLC  
Limited License CSP's  
Life MAGNIFIED  
Malotte Care Provider Services, Inc.  
OSAAT  
Plan B, LLC  
Rose Residential & Day Services  
Licensed CSP's (Case Mgmt. Services Only)  
Arcare, Inc.  
Case Management Services, Inc.  
Daldrup, Bruce  
DreamZz 2 Reality  
Integrated Behavioral Technologies, Inc.  
Jenian, Inc.  
Open Options , Inc.  
dba UCP of Greater Kansas City  
Pathmakers  
Special Helping Hands, LLC

## **Attachment C**

### **Adult Protective Services Advisory Committee Members**

- **Beth Lange- SRS Legal**
- **Bob Bethell- State Representative- Chair of Aging and Long Term Care Committee**
- **Brian Bolen- SRS Community Supports and Services**
- **Christina Hicks- SRS –APS Kansas City Region**
- **Cindy Luxem- Kansas Health Care Association**
- **Debra Zehr- LeadingAge Kansas**
- **Denise Voss- SRS- West Region**
- **Jean Krahn- Kansas Guardianship Program**
- **Joe Ewart- Kansas Department on Aging**
- **Kristine Smith- SRS- APS East Region**
- **Laura Dickinson- Kansas Guardianship Program**
- **Leslie Huss – SRS – APS Program Manager**
- **Loren Snell- Kansas Office of the Attorney General**
- **Mike Oxford- Topeka Independent Living Resource Center**
- **Rachel Monger- LeadingAge Kansas**
- **Sky Westerlund- National Association of Social Workers- Kansas Chapter**
- **Terry Koenig- School of Social Welfare, University of Kansas**
- **Timothy Keck- Kansas Department of Health and Environment**
- **Tom Laing- Interhab**

**Adult Protective Services Advisory Committee Meeting Notes Summary**  
**February 29, 2012**  
**SRS Learning Center- Room C**  
**1:30-3:30**

**Members Present:**

Kara Walters	Cottonwood Inc
Tim Keck	KDHE
Sky Westerlund	KNASW
Kristine Smith	SRS-APS
Denise Voss	SRS-West Region
Sherry Dyder	DSNWK
Rachel Monger	LeadingAge Kansas
Loren Snell	Attorney General
Pamela Beach	SRS-Central Office
Jean Krahn	Kansas Guardianship Program
Laura Dickinson	KGP
Cindy Luxem	KHCA
Gina Meier-Hummel	SRS- CFS
Leslie Huss	SRS-APS

Meeting began at 1:40 pm

**Welcome and Introductions**

**History and Overview of the APS Advisory Committee:**

- Leslie provided an overview of the Advisory Committee which began meeting in August 2011 to address the revision of the APS policies.
- This ongoing advisory committee will assist APS in achieving its overall mission through:
  - Gathering feedback
  - Providing input on program improvements
  - Working on specific committee related tasks
- The committee members were each asked what could they bring (either personally or professionally) to the Advisory Committee. The committee members bring to the table a vast array of experience, perspectives, and interests:
  - Past and current experience working with APS staff and as an APS social worker
  - Work with social workers
  - Perspective of a community provider
  - Work with the Medicaid system
  - Investigating fraud
  - Over 30 years working in the Kansas Guardianship Program
  - Sharing of information
  - Knowledge of APS policies

- Worked with many agencies involved in providing service and supports to adults who are vulnerable
- Knowledge of the legal system and experience prosecuting fraud cases
- Personal experiences with aging parents
- Other ideas and input from Advisory Committee members:
  - Loren suggested that SRS look into working with NAPSA to ask for assistance and see if they could do an evaluation of the program.
  - Rachel noted one of the biggest concerns she hears from her non-profit long term care providers is the issue of fiduciary abuse.
  - Social workers need more resources.
  - Use Kansas Advocates for Better Care as a resource and referral guide.
  - When SRS does its internal audit of the APS program, it should seek input from stakeholders.
  - A lot of APS referrals are really not abuse neglect situations, but rather an individual simply needing a referral to services.

### **APS Updates:**

- APS Program Improvement Time Line- Leslie gave an overview of the APS Program Improvement Timeline:
  - **February 2012**
    - Convene internal SRS workgroup (on-going)
    - Review SWOT analysis (completed 7/11)
    - Identify immediate priorities (policies and procedures), i.e. KIPS
    - Develop list of local, regional and statewide stakeholders to engage on a regular basis
    - Critical Link training for APS/CPS workers (Completed on 2/24)
    - Statewide Program Manager reports directly to Divisional Director for better business management and accountability
    - APS Advisory Committee meeting
    - Develop a Mission Statement for Office of Adult Protective Services
    - Develop an audit proposal and scope statement
  - **March 2012**
    - Office of Adult Protective Services created under the Division of Children and Family Services
    - Reorganize administrative staff oversight of the program
    - Identify measurable APS performance goals (work with NAPSA)
    - Discuss APS public awareness campaign (funding)
    - Develop prevention plan (work with NCPEA)
    - Present APS audit proposal/scope statement to SRS Audit Committee for consideration (scheduled for 3/1/2012)
  - **April 2012**
    - Staff for new office designated/hired and aligned: Including Statewide Program Manager, Assistant Program Manager and 4 Regional Assistant Program Administrators

- **April/May 2012**
    - Convene statewide meetings of APS stakeholders (meet quarterly)
  - **May 2012**
    - Complete Interagency MOU draft for consideration by SRS, AG, KDHE and Dept. of Aging:
      - ❖ Robust action on all cases, large and small
      - ❖ Utilize and coordinate services of Abuse, Neglect, and Exploitation (ANE) unit in AGs office and Fraud Unit at SRS
    - Convene internal SRS-APS workgroup (individual workgroups will be meeting prior to this)
    - Develop statewide staffing patterns per APS case read reports
    - Identify appropriate Standards of Practice per NAPSA to be adopted
  - **June 2012**
    - Incorporate prevention plan into APS Standards of Practice to Prevent abuse and neglect before it ever occurs in the first place
    - Convene training seminar for APS social workers and intake workers to improve cooperation, communication and collaboration
  - **July 2012**
    - Launch a public awareness campaign on adult abuse, neglect and exploitation
- Internal SRS/APS Workgroup-
    - On February 14, 2012, SRS convened an internal SRS-APS workgroup. The goal of the first meeting was to gather feedback, concerns, and “next steps” from various APS staff from across the 4 SRS Regions. Six major issues were identified and workgroups assigned to address these issues:
      - Policy and Procedures
      - Staffing Needs
      - Vision and Mission of APS
      - Communication with stakeholders
      - Training
      - Collaboration with local law enforcement and the Attorney General’s Office
    - The purpose of these six workgroups is to provide task specific information, research, recommendations that would be forwarded to SRS and/or the APS Advisory Committee for further consideration.
    - The entire workgroup will reconvene in May. In the meantime, the workgroups will be working on various tasks.

**Mission Statement for APS:**

- Leslie presented a draft mission statement to begin discussion: *“Safeguarding the well-being of vulnerable adults”*
- Discussed what the committee thought the APS Mission statement should look like
  - Statement should be short and broad in scope
  - Other key words and phrases mentioned for possible use in the mission statement:
    - Minimize risk
    - Investigate abusive conduct against vulnerable adults

- Provide protective and supportive services which enhance independence, dignity, and right to self determination
- Promoting
- The committee was asked to think about other key words and phrases for a mission statement and bring back for discussion at next meeting.

**Other:**

- Concern that there is a duplication of services in the communities. This could be the result of a perception that issues are not being taken care of and someone needs to step up to the plate.
- The reality of this is there are often times resources in place, people just don't know about how to access them. There needs to be better communication and education on available community resources for persons who are vulnerable.

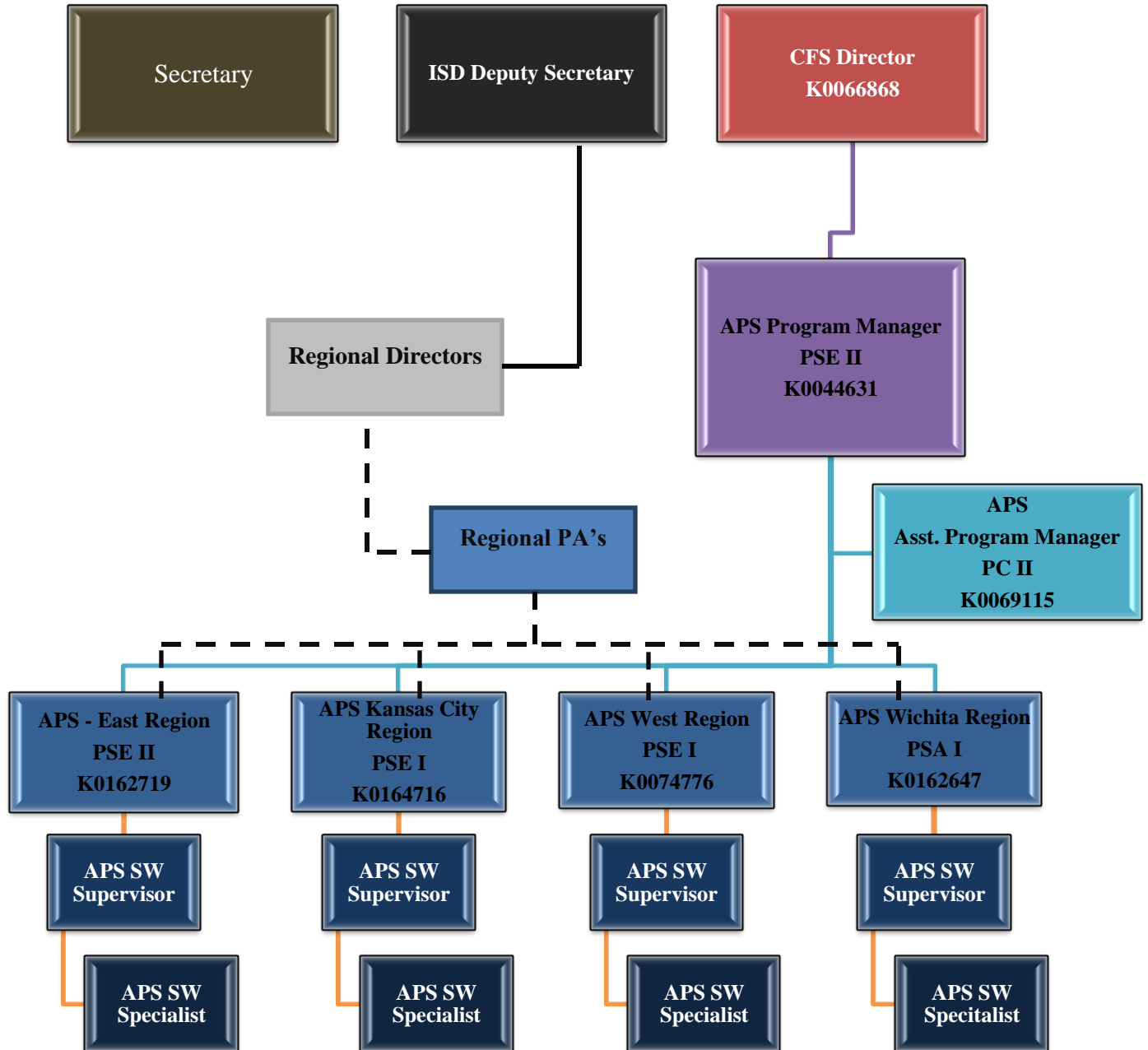
**Next Steps/Meeting:**

Based on the availability on those attending today's meeting, the next APS Advisory Committee meeting was scheduled for Wednesday, March 21, 2012 from 1:00-4:00 at the SRS Learning Center.

Meeting concluded at 3:35.

**Attachment D**

**Adult Protective Service Organizational Chart**



## Attachment E



Department of Social and Rehabilitation Services  
Children and Family Services  
*presents:*

# CONNECTING VULNERABLE KANSANS: WHAT'S NEW IN ADULT PROTECTIVE SERVICES?

Come join us at one of the upcoming stakeholders' meeting to hear what Kansas is doing to protect and support its most vulnerable adults and provide input on how responses and services could be improved.

DATE	LOCATION
Tuesday, April 24, 2012 1:30pm - 3:30pm	SRS Learning Center- Rooms A and B 2600 East Circle Drive South Topeka, KS 66606
Wednesday, April 25, 2012 2:00pm - 4:00pm	Pittsburg SRS- Sunflower Ballroom 320 S. Broadway Pittsburg, KS 66762
Wednesday, May 2, 2012 1:30pm - 3:30pm	Wichita Regional SRS 230 E. Williams, Room 3080 Wichita, KS 67201
Thursday, May 3, 2012 2:00pm - 4:00pm	Kansas City SRS Service Center 402 State Ave Kansas City, KS 66101
Tuesday, May 8, 2012 2:00pm- 4:00pm	Dodge City SRS 1509 Ave P Dodge City, KS 67801
Wednesday, May 9, 2012 10:00am - 12:00pm	Salina SRS 901 Westchester Suita A Salina, KS 67401